



**PHILIPPINE BIDDING DOCUMENTS**

**REPAIR/  
REHABILITATION  
OF REGIONAL  
OFFICE  
BUILDINGS**

Government of the Republic of the Philippines

**Sixth Edition  
July 2020**



# Preface

These Philippine Bidding Documents (PBDs) for the procurement of Infrastructure Projects (hereinafter referred to also as the “Works”) through Competitive Bidding have been prepared by the Government of the Philippines for use by all branches, agencies, departments, bureaus, offices, or instrumentalities of the government, including government-owned and/or -controlled corporations, government financial institutions, state universities and colleges, local government units, and autonomous regional government. The procedures and practices presented in this document have been developed through broad experience, and are for mandatory use in projects that are financed in whole or in part by the Government of the Philippines or any foreign government/foreign or international financing institution in accordance with the provisions of the 2016 revised Implementing Rules and Regulations (IRR) of Republic Act (RA) No. 9184.

The PBDs are intended as a model for admeasurements (unit prices or unit rates in a bill of quantities) types of contract, which are the most common in Works contracting.

The Bidding Documents shall clearly and adequately define, among others: (i) the objectives, scope, and expected outputs and/or results of the proposed contract; (ii) the eligibility requirements of Bidders; (iii) the expected contract duration; and (iv) the obligations, duties, and/or functions of the winning Bidder.

Care should be taken to check the relevance of the provisions of the PBDs against the requirements of the specific Works to be procured. If duplication of a subject is inevitable in other sections of the document prepared by the Procuring Entity, care must be exercised to avoid contradictions between clauses dealing with the same matter.

Moreover, each section is prepared with notes intended only as information for the Procuring Entity or the person drafting the Bidding Documents. They shall not be included in the final documents. The following general directions should be observed when using the documents:

- a. All the documents listed in the Table of Contents are normally required for the procurement of Infrastructure Projects. However, they should be adapted as necessary to the circumstances of the particular Project.
- b. Specific details, such as the “*name of the Procuring Entity*” and “*address for bid submission*,” should be furnished in the Instructions to Bidders, Bid Data Sheet, and Special Conditions of Contract. The final documents should contain neither blank spaces nor options.
- c. This Preface and the footnotes or notes in italics included in the Invitation to Bid, BDS, General Conditions of Contract, Special Conditions of Contract, Specifications, Drawings, and Bill of Quantities are not part of the text of the final document, although they contain instructions that the Procuring Entity should strictly follow.
- d. The cover should be modified as required to identify the Bidding Documents as to the names of the Project, Contract, and Procuring Entity, in addition to date of issue.

- e. **Modifications for specific Procurement Project details should be provided in the Special Conditions of Contract as amendments to the Conditions of Contract. For easy completion, whenever reference has to be made to specific clauses in the Bid Data Sheet or Special Conditions of Contract, these terms shall be printed in bold typeface on Sections I (Instructions to Bidders) and III (General Conditions of Contract), respectively.**
  
- f. **For guidelines on the use of Bidding Forms and the procurement of Foreign-Assisted Projects, these will be covered by a separate issuance of the Government Procurement Policy Board.**

# TABLE OF CONTENTS

<b>Glossary of Terms, Abbreviations, and Acronyms .....</b>	<b>5</b>
<b>Section I. Invitation to Bid.....</b>	<b>8</b>
<b>Section II. Instructions to Bidders.....</b>	<b>12</b>
1. Scope of Bid.....	13
2. Funding Information.....	13
3. Bidding Requirements .....	13
4. Corrupt, Fraudulent, Collusive, Coercive, and Obstructive Practices .....	14
5. Eligible Bidders .....	14
6. Origin of Associated Goods.....	14
7. Subcontracts.....	14
8. Pre-Bid Conference.....	15
9. Clarification and Amendment of Bidding Documents .....	15
10. Documents Comprising the Bid: Eligibility and Technical Components.....	15
11. Documents Comprising the Bid: Financial Component.....	16
12. Alternative Bids .....	16
13. Bid Prices.....	16
14. Bid and Payment Currencies.....	16
15. Bid Security .....	16
16. Sealing and Marking of Bids .....	17
17. Deadline for Submission of Bids .....	17
18. Opening and Preliminary Examination of Bids .....	17
19. Detailed Evaluation and Comparison of Bids.....	17
20. Post Qualification.....	18
21. Signing of the Contract.....	18
<b>Section III. Bid Data Sheet .....</b>	<b>19</b>
<b>Section IV. General Conditions of Contract.....</b>	<b>22</b>
1. Scope of Contract.....	23
2. Sectional Completion of Works.....	23
3. Possession of Site.....	23
4. The Contractor's Obligations.....	23
5. Performance Security.....	23
6. Site Investigation Reports.....	24

7.	Warranty .....	24
8.	Liability of the Contractor .....	24
9.	Termination for Other Causes.....	24
10.	Dayworks .....	24
11.	Program of Work .....	25
12.	Instructions, Inspections and Audits .....	25
13.	Advance Payment .....	25
14.	Progress Payments .....	25
15.	Operating and Maintenance Manuals .....	25
<b>Section V. Special Conditions of Contract.....</b>		<b>26</b>
<b>Section VI. Specifications.....</b>		<b>28</b>
<b>Section VII. Drawings.....</b>		<b>30</b>
<b>Section VIII. Bill of Quantities .....</b>		<b>Error! Bookmark not defined.</b>
<b>Section IX. Checklist of Technical and Financial Documents .....</b>		<b>38</b>

# ***Glossary of Terms, Abbreviations, and Acronyms***

**ABC** – Approved Budget for the Contract.

**ARCC** – Allowable Range of Contract Cost.

**BAC** – Bids and Awards Committee.

**Bid** – A signed offer or proposal to undertake a contract submitted by a bidder in response to and in consonance with the requirements of the bidding documents. Also referred to as *Proposal* and *Tender*. (2016 revised IRR, Section 5[c])

**Bidder** – Refers to a contractor, manufacturer, supplier, distributor and/or consultant who submits a bid in response to the requirements of the Bidding Documents. (2016 revised IRR, Section 5[d])

**Bidding Documents** – The documents issued by the Procuring Entity as the bases for bids, furnishing all information necessary for a prospective bidder to prepare a bid for the Goods, Infrastructure Projects, and/or Consulting Services required by the Procuring Entity. (2016 revised IRR, Section 5[e])

**BIR** – Bureau of Internal Revenue.

**BSP** – Bangko Sentral ng Pilipinas.

**CDA** – Cooperative Development Authority.

**Consulting Services** – Refer to services for Infrastructure Projects and other types of projects or activities of the GOP requiring adequate external technical and professional expertise that are beyond the capability and/or capacity of the GOP to undertake such as, but not limited to: (i) advisory and review services; (ii) pre-investment or feasibility studies; (iii) design; (iv) construction supervision; (v) management and related services; and (vi) other technical services or special studies. (2016 revised IRR, Section 5[i])

**Contract** – Refers to the agreement entered into between the Procuring Entity and the Supplier or Manufacturer or Distributor or Service Provider for procurement of Goods and Services; Contractor for Procurement of Infrastructure Projects; or Consultant or Consulting Firm for Procurement of Consulting Services; as the case may be, as recorded in the Contract Form signed by the parties, including all attachments and appendices thereto and all documents incorporated by reference therein.

**Contractor** – is a natural or juridical entity whose proposal was accepted by the Procuring Entity and to whom the Contract to execute the Work was awarded. Contractor as used in these Bidding Documents may likewise refer to a supplier, distributor, manufacturer, or consultant.

**CPI** – Consumer Price Index.

**DOLE** – Department of Labor and Employment.

**DTI** – Department of Trade and Industry.

**Foreign-funded Procurement or Foreign-Assisted Project** – Refers to procurement whose funding source is from a foreign government, foreign or international financing institution as specified in the Treaty or International or Executive Agreement. (2016 revised IRR, Section 5[b]).

**GFI** – Government Financial Institution.

**GOCC** – Government-owned and/or –controlled corporation.

**Goods** – Refer to all items, supplies, materials and general support services, except Consulting Services and Infrastructure Projects, which may be needed in the transaction of public businesses or in the pursuit of any government undertaking, project or activity, whether in the nature of equipment, furniture, stationery, materials for construction, or personal property of any kind, including non-personal or contractual services such as the repair and maintenance of equipment and furniture, as well as trucking, hauling, janitorial, security, and related or analogous services, as well as procurement of materials and supplies provided by the Procuring Entity for such services. The term “related” or “analogous services” shall include, but is not limited to, lease or purchase of office space, media advertisements, health maintenance services, and other services essential to the operation of the Procuring Entity. (2016 revised IRR, Section 5[r])

**GOP** – Government of the Philippines.

**Infrastructure Projects** – Include the construction, improvement, rehabilitation, demolition, repair, restoration or maintenance of roads and bridges, railways, airports, seaports, communication facilities, civil works components of information technology projects, irrigation, flood control and drainage, water supply, sanitation, sewerage and solid waste management systems, shore protection, energy/power and electrification facilities, national buildings, school buildings, hospital buildings, and other related construction projects of the government. Also referred to as *civil works or works*. (2016 revised IRR, Section 5[u])

**LGUs** – Local Government Units.

**NFCC** – Net Financial Contracting Capacity.

**NGA** – National Government Agency.

**PCAB** – Philippine Contractors Accreditation Board.

**PhilGEPS** - Philippine Government Electronic Procurement System.

**Procurement Project** – refers to a specific or identified procurement covering goods, infrastructure project or consulting services. A Procurement Project shall be described, detailed, and scheduled in the Project Procurement Management Plan prepared by the agency which shall be consolidated in the procuring entity's Annual Procurement Plan. (GPPB Circular No. 06-2019 dated 17 July 2019)

**PSA** – Philippine Statistics Authority.

**SEC** – Securities and Exchange Commission.

**SLCC – Single Largest Completed Contract.**

**UN – United Nations.**



***Section I. Invitation to Bid***



Republic of the Philippines  
**Department of Education**  
 Cordillera Administrative Region

**Invitation to Bid for the Repair/Rehabilitation of  
 Regional Office Buildings**

1. The Department of Education – Cordillera Administrative Region Regional Office (DepEd-CAR RO), through the 2021 General Appropriations Act intends to apply the sum of:

a. One Million Three Hundred Forty Seven Thousand One Hundred Fourteen Pesos and 72/100 Pesos (Php1,347,114.72) only for LOT 1 with identification number CB 2021-009 - Lot 1 ;

b. Four Hundred Forty Thousand Three Hundred Seventy Four Pesos (Php440,374.00) only for LOT 2 with identification number CB 2021-009 - Lot 2;

c. Two Hundred Ten Thousand Five Hundred Forty Nine Pesos and 20/100 (Php210,549.20) only for LOT 3 with identification number CB 2021-009 - Lot 3;

being the Approved Budget for the Contract (ABC) to payments under the contract for each lot. Bids received in excess of the ABC for each lot shall be automatically rejected at bid opening.

2. The DepEd-CAR RO now invites bids for the above Procurement Project. Completion of the Works/Contract Duration and other details are as follows:

LOT NO.	Description	LOCATION	ABC (Php) per Lot	Contract Duration
1	Partial Repair/Rehabilitation/Improvement of Building No. 1 (Main Bldg)	DepED-CAR Regional Office, Wangal, La Trinidad, Benguet	1,347,114.72	75 Cds
2	Repair/ Rehabilitation of Building No. 2 (SNC Bldg)		440,374.85	30 Cds
3	Repair/Rehabilitation of Building No. 3		210,549.20	30 Cds

Bidders should have completed a contract similar to the Project. The description of an eligible bidder is contained in the Bidding Documents, particularly, in Section II (Instructions to Bidders).





Republic of the Philippines  
**Department of Education**  
Cordillera Administrative Region

---

3. Bidding will be conducted through open competitive bidding procedures using non-discretionary “pass/fail” criterion as specified in the 2016 revised Implementing Rules and Regulations (IRR) of Republic Act (RA) No. 9184.
4. Interested bidders may obtain further information from DepED-CAR Regional Office and inspect the Bidding Documents at the address given below from 8:00am to 5:00pm, Mondays to Fridays.
5. A complete set of Bidding Documents may be acquired by interested bidders starting April 30, 2021 from the given address and website/s below and upon payment of the applicable fee for the Bidding Documents, pursuant to the latest Guidelines issued by the GPPB, in the amount of **Php1,000.00 for Lot 1, Php 500.00 for Lot 2 and, Php500.00 for Lot 3.** The Procuring Entity shall allow the bidder to present its proof of payment for the fees in person, by facsimile, or through electronic means.
6. The DepEd-CAR Regional Office will hold a **Pre-Bid Conference on May 7, 2021 at 10:30am at the SNC Hall, DepED-CAR Regional office, Wangal, La Trinidad, Benguet**, which shall be open to prospective bidders.
7. Bids must be duly received by the BAC Secretariat through manual submission at the office address as indicated below, **on or before 9:00am of May 21, 2021**. Late bids shall not be accepted.
8. All bids must be accompanied by a bid security in any of the acceptable forms and in the amount stated in **ITB** Clause 16.
9. **Bid opening shall be on May 21, 2021 (Friday) at 9:01am at the covered court of the DepED-CAR RO, Wangal, La Trinidad, Benguet.** Bids will be opened in the presence of the bidders’ representatives who choose to attend the activity.
10. Bidders may bid for more than one (1) lot provided that the total value of lots to be awarded shall be within its Allowable Range of Contract Cost (ARCC) and its experience.
11. The DepED-CAR Regional Office reserves the right to reject any and all bids, declare a failure of bidding, or not award the contract at any time prior to contract award in accordance with Sections 35.6 and 41 of the 2016 revised Implementing Rules and Regulations (IRR) of RA No. 9184, without thereby incurring any liability to the affected bidder or bidders.





Republic of the Philippines  
**Department of Education**  
Cordillera Administrative Region

---

12. For further information, please refer to:

*BAC Secretariat*  
*DepED-CAR Regional Office*  
*Wangal, La Trinidad, Benguet*  
*Tel. No. (074) 422-1804/(074) 422-5155*  
*Email address: [depedcar.bacsecretariat@gmail.com](mailto:depedcar.bacsecretariat@gmail.com)*

13. You may visit the following websites:

For downloading of Bidding Documents: ***depedcar.ph***

*April 29, 2021*

  
**FLORANTE E. VERGARA**  
**BAC Chairperson**



## ***Section II. Instructions to Bidders***

## 1. Scope of Bid

The Procuring Entity, DepED-CAR Regional Office, invites Bids for the **Repair/Rehabilitation of Regional Office Buildings** with Project Identification Numbers:

- a. LOT 1 -- Identification number CB 2021-009 - Lot 1
- b. LOT 2 -- Identification number CB 2021-009 - Lot 2
- c. LOT 3 -- Identification number CB 2021-009 - Lot 3

The Procurement Project (referred to herein as "Project") is for the construction of Works, as described in Section VI (Specifications).

## 2. Funding Information

- 2.1. The GOP through the source of funding as indicated below for CY 2021 in the amounts of:

LOT NO.	ABC (Php) per Lot
1	1,347,114.72
2	440,374.85
3	210,549.20

- 2.2. The source of funding is:

- a. NGA, the General Appropriations Act or Special Appropriations.

## 3. Bidding Requirements

The Bidding for the Project shall be governed by all the provisions of RA No. 9184 and its 2016 revised IRR, including its Generic Procurement Manual and associated policies, rules and regulations as the primary source thereof, while the herein clauses shall serve as the secondary source thereof.

Any amendments made to the IRR and other GPPB issuances shall be applicable only to the ongoing posting, advertisement, or invitation to bid by the BAC through the issuance of a supplemental or bid bulletin.

The Bidder, by the act of submitting its Bid, shall be deemed to have inspected the site, determined the general characteristics of the contracted Works and the conditions for this Project, such as the location and the nature of the work; (b) climatic conditions; (c) transportation facilities; (c) nature and condition of the terrain, geological conditions at the site communication facilities, requirements, location and availability of construction aggregates and other materials, labor, water, electric power and access roads; and (d) other factors that may affect the cost, duration and execution or implementation of the contract, project, or work and examine all instructions, forms, terms, and project requirements in the Bidding Documents.

#### **4. Corrupt, Fraudulent, Collusive, Coercive, and Obstructive Practices**

The Procuring Entity, as well as the Bidders and Contractors, shall observe the highest standard of ethics during the procurement and execution of the contract. They or through an agent shall not engage in corrupt, fraudulent, collusive, coercive, and obstructive practices defined under Annex "I" of the 2016 revised IRR of RA No. 9184 or other integrity violations in competing for the Project.

#### **5. Eligible Bidders**

- 5.1. Only Bids of Bidders found to be legally, technically, and financially capable will be evaluated.
- 5.2. The Bidder must have an experience of having completed a Single Largest Completed Contract (SLCC) that is similar to this Project, equivalent to at least fifty percent (50%) of the ABC adjusted, if necessary, by the Bidder to current prices using the PSA's CPI, except under conditions provided for in Section 23.4.2.4 of the 2016 revised IRR of RA No. 9184.

A contract is considered to be "similar" to the contract to be bid if it has the major categories of work stated in the **BDS**.

- 5.3. For Foreign-funded Procurement, the Procuring Entity and the foreign government/foreign or international financing institution may agree on another track record requirement, as specified in the Bidding Document prepared for this purpose.
- 5.4. The Bidders shall comply with the eligibility criteria under Section 23.4.2 of the 2016 IRR of RA No. 9184.

#### **6. Origin of Associated Goods**

There is no restriction on the origin of Goods other than those prohibited by a decision of the UN Security Council taken under Chapter VII of the Charter of the UN.

#### **7. Subcontracts**

- 7.1. The Bidder may subcontract portions of the Project to the extent allowed by the Procuring Entity as stated herein, but in no case more than fifty percent (50%) of the Project.

**The Procuring Entity has prescribed that:**

- a. **Subcontracting is not allowed.**

- 7.1. Subcontracting of any portion of the Project does not relieve the Contractor of any liability or obligation under the Contract. The Supplier will be responsible for the acts, defaults, and negligence of any subcontractor, its agents, servants,

or workmen as fully as if these were the Contractor's own acts, defaults, or negligence, or those of its agents, servants, or workmen.

## **8. Pre-Bid Conference**

The Procuring Entity will hold a pre-bid conference for this Project on the specified date and time and at its physical address, at the SNC Hall, DepED-CAR Regional Office, Wangal, La Trinidad, Benguet, on May 7, 2021 at 10:30am as indicated in paragraph 6 of the **IB**.

## **9. Clarification and Amendment of Bidding Documents**

Prospective bidders may request for clarification on and/or interpretation of any part of the Bidding Documents. Such requests must be in writing and received by the Procuring Entity, either at its given address or through electronic mail indicated in the **IB**, at least ten (10) calendar days before the deadline set for the submission and receipt of Bids.

## **10. Documents Comprising the Bid: Eligibility and Technical Components**

- 10.1. The first envelope shall contain the eligibility and technical documents of the Bid as specified in **Section IX. Checklist of Technical and Financial Documents**.
- 10.2. If the eligibility requirements or statements, the bids, and all other documents for submission to the BAC are in foreign language other than English, it must be accompanied by a translation in English, which shall be authenticated by the appropriate Philippine foreign service establishment, post, or the equivalent office having jurisdiction over the foreign bidder's affairs in the Philippines. For Contracting Parties to the Apostille Convention, only the translated documents shall be authenticated through an apostille pursuant to GPPB Resolution No. 13-2019 dated 23 May 2019. The English translation shall govern, for purposes of interpretation of the bid.
- 10.3. A valid PCAB License is required, and in case of joint ventures, a valid special PCAB License, and registration for the type and cost of the contract for this Project. Any additional type of Contractor license or permit shall be indicated in the **BDS**.
- 10.4. A List of Contractor's key personnel (e.g., Project Manager, Project Engineers, Materials Engineers, and Foremen) assigned to the contract to be bid, with their complete qualification and experience data shall be provided. These key personnel must meet the required minimum years of experience set in the **BDS**.
- 10.5. A List of Contractor's major equipment units, which are owned, leased, and/or under purchase agreements, supported by proof of ownership, certification of availability of equipment from the equipment lessor/vendor for the duration of the project, as the case may be, must meet the minimum requirements for the contract set in the **BDS**.



## **11. Documents Comprising the Bid: Financial Component**

- 11.1. The second bid envelope shall contain the financial documents for the Bid as specified in **Section IX. Checklist of Technical and Financial Documents**.
- 11.2. Any bid exceeding the ABC indicated in paragraph 1 of the **IB** shall not be accepted.
- 11.3. For Foreign-funded procurement, a ceiling may be applied to bid prices provided the conditions are met under Section 31.2 of the 2016 revised IRR of RA No. 9184.

## **12. Alternative Bids**

Bidders shall submit offers that comply with the requirements of the Bidding Documents, including the basic technical design as indicated in the drawings and specifications. Unless there is a value engineering clause in the **BDS**, alternative Bids shall not be accepted.

## **13. Bid Prices**

All bid prices for the given scope of work in the Project as awarded shall be considered as fixed prices, and therefore not subject to price escalation during contract implementation, except under extraordinary circumstances as determined by the NEDA and approved by the GPPB pursuant to the revised Guidelines for Contract Price Escalation guidelines.

## **14. Bid and Payment Currencies**

14.1. Bid prices may be quoted in the local currency or tradeable currency accepted by the BSP at the discretion of the Bidder. However, for purposes of bid evaluation, Bids denominated in foreign currencies shall be converted to Philippine currency based on the exchange rate as published in the BSP reference rate bulletin on the day of the bid opening.

14.2. *Payment of the contract price shall be made in:*

- a. **Philippine Pesos.**

## **15. Bid Security**

15.1. The Bidder shall submit a Bid Securing Declaration or any form of Bid Security in the amount indicated in the **BDS**, which shall be not less than the percentage of the ABC in accordance with the schedule in the **BDS**.

- 15.2. The Bid and bid security shall be valid until September 18, 2021. Any bid not accompanied by an acceptable bid security shall be rejected by the Procuring Entity as non-responsive.

## **16. Sealing and Marking of Bids**

Each Bidder shall submit one copy of the first and second components of its Bid.

The Procuring Entity may request additional hard copies and/or electronic copies of the Bid. However, failure of the Bidders to comply with the said request shall not be a ground for disqualification.

If the Procuring Entity allows the submission of bids through online submission to the given website or any other electronic means, the Bidder shall submit an electronic copy of its Bid, which must be digitally signed. An electronic copy that cannot be opened or is corrupted shall be considered non-responsive and, thus, automatically disqualified.

## **17. Deadline for Submission of Bids**

The Bidders shall submit on the specified date and time and either at its physical address or through online submission as indicated in paragraph 7 of the **IB**.

## **18. Opening and Preliminary Examination of Bids**

- 18.1. The BAC shall open the Bids in public at the time, on the date, and at the place specified in paragraph 9 of the **IB**. The Bidders' representatives who are present shall sign a register evidencing their attendance. In case videoconferencing, webcasting or other similar technologies will be used, attendance of participants shall likewise be recorded by the BAC Secretariat.

In case the Bids cannot be opened as scheduled due to justifiable reasons, the rescheduling requirements under Section 29 of the 2016 revised IRR of RA No. 9184 shall prevail.

- 18.2. The preliminary examination of Bids shall be governed by Section 30 of the 2016 revised IRR of RA No. 9184.

## **19. Detailed Evaluation and Comparison of Bids**

- 19.1. The Procuring Entity's BAC shall immediately conduct a detailed evaluation of all Bids rated "*passed*" using non-discretionary pass/fail criteria. The BAC shall consider the conditions in the evaluation of Bids under Section 32.2 of 2016 revised IRR of RA No. 9184.
- 19.2. If the Project allows partial bids, all Bids and combinations of Bids as indicated in the **BDS** shall be received by the same deadline and opened and evaluated simultaneously so as to determine the Bid or combination of Bids offering the lowest calculated cost to the Procuring Entity. Bid Security as required by **ITB** Clause 15 shall be submitted for each contract (lot) separately.

19.3. In all cases, the NFCC computation pursuant to Section 23.4.2.6 of the 2016 revised IRR of RA No. 9184 must be sufficient for the total of the ABCs for all the lots participated in by the prospective Bidder.

## **20. Post Qualification**

Within a non-extendible period of five (5) calendar days from receipt by the Bidder of the notice from the BAC that it submitted the Lowest Calculated Bid, the Bidder shall submit its latest income and business tax returns filed and paid through the BIR Electronic Filing and Payment System (eFPS), and other appropriate licenses and permits required by law and stated in the **BDS**.

## **21. Signing of the Contract**

The documents required in Section 37.2 of the 2016 revised IRR of RA No. 9184 shall form part of the Contract. Additional Contract documents are indicated in the **BDS**.

### ***Section III. Bid Data Sheet***

# Bid Data Sheet

ITB Clause																						
5.2	For this purpose, contracts similar to the Project refer to contracts which have the same major categories of work, which shall be: General Building																					
7.1	Subcontracting is not allowed																					
10.1	To be included in the Technical Documents is a Site Inspection Certificate signed by the Chief Administrative Officer of the Administrative Division																					
10.3	<i>No further instructions</i>																					
10.4	<p>The key personnel must meet the required minimum years of experience set below:</p> <table border="1" style="width: 100%; border-collapse: collapse;"> <thead> <tr> <th style="text-align: left;"><u>Key Personnel</u></th> <th style="text-align: center;"><u>General Experience</u></th> <th style="text-align: center;"><u>Relevant Experience</u></th> </tr> </thead> <tbody> <tr> <td>Project Engineer</td> <td style="text-align: center;">5 years</td> <td style="text-align: center;">3 years</td> </tr> <tr> <td>Safety Officer</td> <td style="text-align: center;">2 years</td> <td style="text-align: center;">1 years</td> </tr> <tr> <td>General foreman</td> <td style="text-align: center;">3 years</td> <td style="text-align: center;">2 years</td> </tr> <tr> <td>Skilled Mason</td> <td style="text-align: center;">2 years</td> <td style="text-align: center;">1 year</td> </tr> <tr> <td>Skilled Carpenters</td> <td style="text-align: center;">2 years</td> <td style="text-align: center;">1 year</td> </tr> <tr> <td>Skilled welders</td> <td style="text-align: center;">2 years</td> <td style="text-align: center;">1 year (as needed)</td> </tr> </tbody> </table>	<u>Key Personnel</u>	<u>General Experience</u>	<u>Relevant Experience</u>	Project Engineer	5 years	3 years	Safety Officer	2 years	1 years	General foreman	3 years	2 years	Skilled Mason	2 years	1 year	Skilled Carpenters	2 years	1 year	Skilled welders	2 years	1 year (as needed)
<u>Key Personnel</u>	<u>General Experience</u>	<u>Relevant Experience</u>																				
Project Engineer	5 years	3 years																				
Safety Officer	2 years	1 years																				
General foreman	3 years	2 years																				
Skilled Mason	2 years	1 year																				
Skilled Carpenters	2 years	1 year																				
Skilled welders	2 years	1 year (as needed)																				
10.5	<p>The minimum major equipment requirements are the following:</p> <table border="1" style="width: 100%; border-collapse: collapse;"> <thead> <tr> <th style="text-align: left;"><u>Equipment</u></th> <th style="text-align: center;"><u>Capacity</u></th> <th style="text-align: center;"><u>Number of Units</u></th> </tr> </thead> <tbody> <tr> <td>Dumptruck/elf</td> <td style="text-align: center;">2 cu.m.</td> <td style="text-align: center;">1</td> </tr> <tr> <td>Various Power hand tools</td> <td></td> <td></td> </tr> <tr> <td>Welding machine</td> <td></td> <td></td> </tr> </tbody> </table>	<u>Equipment</u>	<u>Capacity</u>	<u>Number of Units</u>	Dumptruck/elf	2 cu.m.	1	Various Power hand tools			Welding machine											
<u>Equipment</u>	<u>Capacity</u>	<u>Number of Units</u>																				
Dumptruck/elf	2 cu.m.	1																				
Various Power hand tools																						
Welding machine																						
11.1	The second bid envelope/financial component should include a USB/flash drive (soft copy of Financial proposal in excel format)																					
12	No further instructions																					
15.1	<p>The bid security shall be in the form of a Bid Securing Declaration or any of the following forms and amounts:</p> <p><b><u>LOT 1:</u></b></p> <ol style="list-style-type: none"> <li>a. The amount of not less than <u>Php26,942.29</u> [Two percent (2%) of ABC], if bid security is in cash, cashier's/manager's check, bank draft/guarantee or irrevocable letter of credit;</li> <li>b. The amount of not less than <u>Php 67,355.74</u> [five percent (5%) of ABC] if bid security is in Surety Bond.</li> </ol> <p><b><u>LOT 2:</u></b></p> <ol style="list-style-type: none"> <li>a. The amount of not less than <u>Php 8,807.50</u> [two percent (2%) of ABC], if bid security is in cash, cashier's/manager's check, bank draft/guarantee or irrevocable letter of credit;</li> <li>b. The amount of not less than <u>Php22,018.74</u> [five percent (5%) of ABC] if bid security is in Surety Bond.</li> </ol>																					

	<p><b>LOT 3:</b></p> <p>a. The amount of not less than <u>Php 4,210.98</u> [two percent (2%) of ABC], if bid security is in cash, cashier's/manager's check, bank draft/guarantee or irrevocable letter of credit;</p> <p>b. The amount of not less than <u>Php 10,527.46</u> [five percent (5%) of ABC] if bid security is in Surety Bond.</p>
16	Each bidder is requested to submit three (3) copies/sets – 1 original and 2 photocopies – of the first and second component of its bid. The use of tabs is also encouraged to facilitate examination of documents.
19.2	The project is packaged into 3 lots and each lot shall not be divided into sub-lots for the purpose of bidding, evaluation and contract award.
20	
21	<p>Additional contract documents relevant to the Project that may be required by existing laws and/or the Procuring Entity:</p> <p>a) Performance Security in the form and amount per calculated bid;</p> <p>b) Contractor's All Risk Insurance (CARI), coverage of which starts upon commencement of work;</p> <p>c) Construction Safety and Health Program approved by the Department of Labor;</p> <p>d) Manpower Schedule;</p> <p>e) Construction Methods; and,</p> <p>f) Equipment Utilization Schedule.</p>

## ***Section IV. General Conditions of Contract***

## **1. Scope of Contract**

This Contract shall include all such items, although not specifically mentioned, that can be reasonably inferred as being required for its completion as if such items were expressly mentioned herein. All the provisions of RA No. 9184 and its 2016 revised IRR, including the Generic Procurement Manual, and associated issuances, constitute the primary source for the terms and conditions of the Contract, and thus, applicable in contract implementation. Herein clauses shall serve as the secondary source for the terms and conditions of the Contract.

This is without prejudice to Sections 74.1 and 74.2 of the 2016 revised IRR of RA No. 9184 allowing the GPPB to amend the IRR, which shall be applied to all procurement activities, the advertisement, posting, or invitation of which were issued after the effectivity of the said amendment.

## **2. Sectional Completion of Works**

If sectional completion is specified in the **Special Conditions of Contract (SCC)**, references in the Conditions of Contract to the Works, the Completion Date, and the Intended Completion Date shall apply to any Section of the Works (other than references to the Completion Date and Intended Completion Date for the whole of the Works).

## **3. Possession of Site**

3.1 The Procuring Entity shall give possession of all or parts of the Site to the Contractor based on the schedule of delivery indicated in the **SCC**, which corresponds to the execution of the Works. If the Contractor suffers delay or incurs cost from failure on the part of the Procuring Entity to give possession in accordance with the terms of this clause, the Procuring Entity's Representative shall give the Contractor a Contract Time Extension and certify such sum as fair to cover the cost incurred, which sum shall be paid by Procuring Entity.

3.2 If possession of a portion is not given by the above date, the Procuring Entity will be deemed to have delayed the start of the relevant activities. The resulting adjustments in contract time to address such delay may be addressed through contract extension provided under Annex "E" of the 2016 revised IRR of RA No. 9184.

## **4. The Contractor's Obligations**

The Contractor shall employ the key personnel named in the Schedule of Key Personnel indicating their designation, in accordance with **ITB Clause 10.3** and specified in the **BDS**, to carry out the supervision of the Works.

The Procuring Entity will approve any proposed replacement of key personnel only if their relevant qualifications and abilities are equal to or better than those of the personnel listed in the Schedule.

## **5. Performance Security**



- 5.1. Within ten (10) calendar days from receipt of the Notice of Award from the Procuring Entity but in no case later than the signing of the contract by both parties, the successful Bidder shall furnish the performance security in any of the forms prescribed in Section 39 of the 2016 revised IRR.
- 5.2. The Contractor, by entering into the Contract with the Procuring Entity, acknowledges the right of the Procuring Entity to institute action pursuant to RA No. 3688 against any subcontractor be they an individual, firm, partnership, corporation, or association supplying the Contractor with labor, materials and/or equipment for the performance of this Contract.

## **6. Site Investigation Reports**

The Contractor, in preparing the Bid, shall rely on any Site Investigation Reports referred to in the SCC supplemented by any information obtained by the Contractor.

## **7. Warranty**

- 7.1. In case the Contractor fails to undertake the repair works under Section 62.2.2 of the 2016 revised IRR, the Procuring Entity shall forfeit its performance security, subject its property(ies) to attachment or garnishment proceedings, and perpetually disqualify it from participating in any public bidding. All payables of the GOP in his favor shall be offset to recover the costs.
- 7.2. The warranty against Structural Defects/Failures, except that occasioned-on force majeure, shall cover the period from the date of issuance of the Certificate of Final Acceptance by the Procuring Entity. Specific duration of the warranty is found in the SCC.

## **8. Liability of the Contractor**

Subject to additional provisions, if any, set forth in the SCC, the Contractor's liability under this Contract shall be as provided by the laws of the Republic of the Philippines.

If the Contractor is a joint venture, all partners to the joint venture shall be jointly and severally liable to the Procuring Entity.

## **9. Termination for Other Causes**

Contract termination shall be initiated in case it is determined *prima facie* by the Procuring Entity that the Contractor has engaged, before, or during the implementation of the contract, in unlawful deeds and behaviors relative to contract acquisition and implementation, such as, but not limited to corrupt, fraudulent, collusive, coercive, and obstructive practices as stated in ITB Clause 4.

## **10. Dayworks**

Subject to the guidelines on Variation Order in Annex "E" of the 2016 revised IRR of RA No. 9184, and if applicable as indicated in the SCC, the Dayworks rates in the

Contractor's Bid shall be used for small additional amounts of work only when the Procuring Entity's Representative has given written instructions in advance for additional work to be paid for in that way.

## **11. Program of Work**

11.1. The Contractor shall submit to the Procuring Entity's Representative for approval the said Program of Work showing the general methods, arrangements, order, and timing for all the activities in the Works. The submissions of the Program of Work are indicated in the SCC.

11.2. The Contractor shall submit to the Procuring Entity's Representative for approval an updated Program of Work at intervals no longer than the period stated in the SCC. If the Contractor does not submit an updated Program of Work within this period, the Procuring Entity's Representative may withhold the amount stated in the SCC from the next payment certificate and continue to withhold this amount until the next payment after the date on which the overdue Program of Work has been submitted.

## **12. Instructions, Inspections and Audits**

The Contractor shall permit the GOP or the Procuring Entity to inspect the Contractor's accounts and records relating to the performance of the Contractor and to have them audited by auditors of the GOP or the Procuring Entity, as may be required.

## **13. Advance Payment**

The Procuring Entity shall, upon a written request of the Contractor which shall be submitted as a Contract document, make an advance payment to the Contractor in an amount not exceeding fifteen percent (15%) of the total contract price, to be made in lump sum, or at the most two installments according to a schedule specified in the SCC, subject to the requirements in Annex "E" of the 2016 revised IRR of RA No. 9184.

## **14. Progress Payments**

The Contractor may submit a request for payment for Work accomplished. Such requests for payment shall be verified and certified by the Procuring Entity's Representative/Project Engineer. Except as otherwise stipulated in the SCC, materials and equipment delivered on the site but not completely put in place shall not be included for payment.

## **15. Operating and Maintenance Manuals**

15.1. If required, the Contractor will provide "as built" Drawings and/or operating and maintenance manuals as specified in the SCC.

15.2. If the Contractor does not provide the Drawings and/or manuals by the dates stated above, or they do not receive the Procuring Entity's Representative's approval, the Procuring Entity's Representative may withhold the amount stated in the SCC from payments due to the Contractor.

## ***Section V. Special Conditions of Contract***

## Special Conditions of Contract

GCC Clause	
2	<i>The Intended completion date for Lot 1 is 75 cds, for Lot 2 is 30 cds and for Lot 3 is 30 calendar days</i>
4.1	<i>The procuring entity shall give possession of all parts of the site to the contractor within 7 days from receipt of the Notice to Proceed.</i>
6	<i>The site investigation reports are: none</i>
7.2	In case of permanent structures, such as buildings of types 4 and 5 as classified under the National Building Code of the Philippines and other structures made of steel, iron, or concrete which comply with relevant structural codes (e.g., DPWH Standard Specifications), such as, but not limited to, steel/concrete bridges, flyovers, aircraft movement areas, ports, dams, tunnels, filtration and treatment plants, sewerage systems, power plants, transmission and communication towers, railway system, and other similar permanent structures:] Fifteen (15) years.
10	<i>Dayworks:</i>  a. No dayworks are applicable to the contract.
11.1	The Contractor shall submit the Program of Work to the Procuring Entity's Representative within 15 days of delivery of the Notice of Award.
11.2	The amount to be withheld for late submission of an updated Program of Work is 1% of Contract Amount.
13	<i>The amount of the advance payment is 15% of the Contract amount</i>
14	Materials and equipment delivered on the site but not completely put in place shall be included for payment.
15.1	The date by which operating and maintenance manuals are required is <i>15 days upon issuance of COC.</i>  The date by which "as built" drawings are required is within 15 days upon issuance of Certificate of Completion.
15.2	The amount to be withheld for failing to produce "as built" drawings and/or operating and maintenance manuals by the date required is <i>5% of the Contract Amount.</i>

## ***Section VI. Specifications***

## **Notes on Specifications**

A set of precise and clear specifications is a prerequisite for Bidders to respond realistically and competitively to the requirements of the Procuring Entity without qualifying or conditioning their Bids. In the context of international competitive bidding, the specifications must be drafted to permit the widest possible competition and, at the same time, present a clear statement of the required standards of workmanship, materials, and performance of the goods and services to be procured. Only if this is done will the objectives of economy, efficiency, and fairness in procurement be realized, responsiveness of Bids be ensured, and the subsequent task of bid evaluation facilitated. The specifications should require that all goods and materials to be incorporated in the Works be new, unused, of the most recent or current models, and incorporate all recent improvements in design and materials unless provided otherwise in the Contract.

Samples of specifications from previous similar projects are useful in this respect. The use of metric units is mandatory. Most specifications are normally written specially by the Procuring Entity or its representative to suit the Works at hand. There is no standard set of Specifications for universal application in all sectors in all regions, but there are established principles and practices, which are reflected in these PBDs.

There are considerable advantages in standardizing General Specifications for repetitive Works in recognized public sectors, such as highways, ports, railways, urban housing, irrigation, and water supply, in the same country or region where similar conditions prevail. The General Specifications should cover all classes of workmanship, materials, and equipment commonly involved in construction, although not necessarily to be used in a particular Works Contract. Deletions or addenda should then adapt the General Specifications to the particular Works.

Care must be taken in drafting specifications to ensure that they are not restrictive. In the specification of standards for goods, materials, and workmanship, recognized international standards should be used as much as possible. Where other particular standards are used, whether national standards or other standards, the specifications should state that goods, materials, and workmanship that meet other authoritative standards, and which ensure substantially equal or higher quality than the standards mentioned, will also be acceptable. The following clause may be inserted in the SCC.

### **Sample Clause: Equivalency of Standards and Codes**

Wherever reference is made in the Contract to specific standards and codes to be met by the goods and materials to be furnished, and work performed or tested, the provisions of the latest current edition or revision of the relevant standards and codes in effect shall apply, unless otherwise expressly stated in the Contract. Where such standards and codes are national, or relate to a particular country or region, other authoritative standards that ensure a substantially equal or higher quality than the standards and codes specified will be accepted subject to the Procuring Entity's Representative's prior review and written consent. Differences between the standards specified and the proposed alternative standards shall be fully described in writing by the Contractor and submitted to the Procuring Entity's Representative at least twenty-eight (28) days prior to the date when the Contractor desires the Procuring Entity's Representative's consent. In the event the Procuring Entity's Representative determines that such proposed deviations do not ensure substantially equal or higher quality, the Contractor shall comply with the standards specified in the documents.

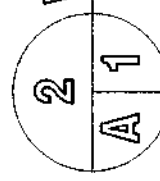
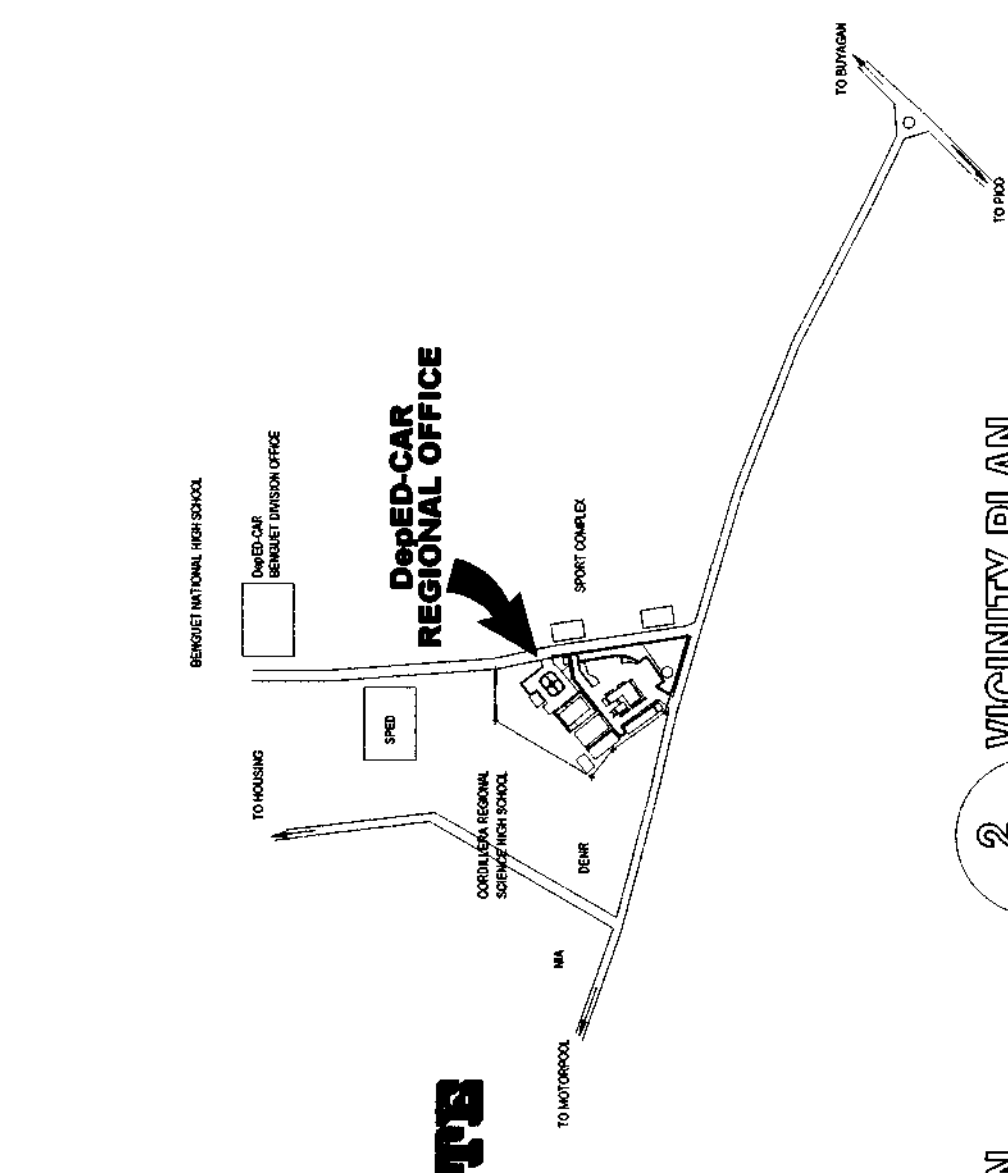
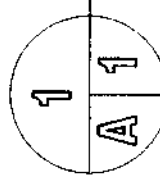
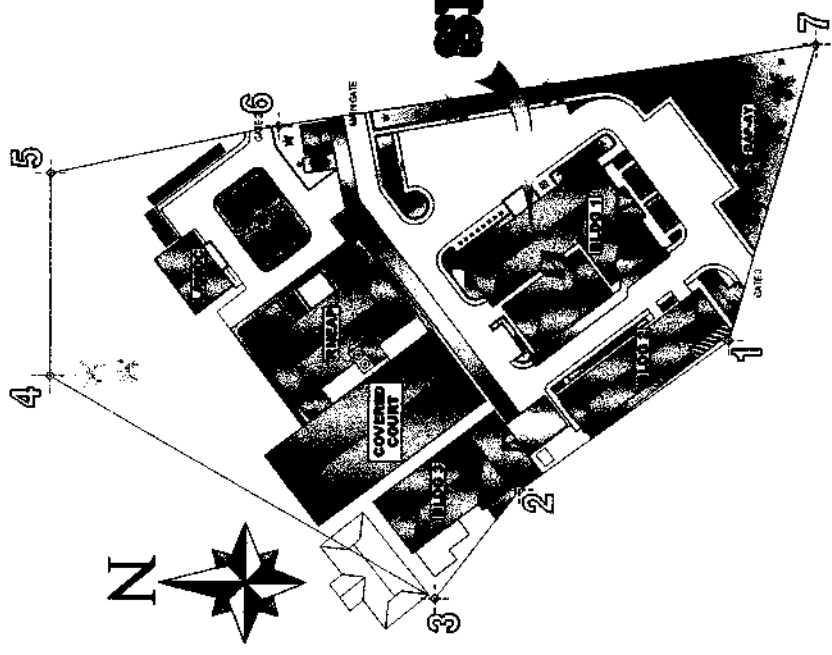
These notes are intended only as information for the Procuring Entity or the person drafting the Bidding Documents. They should not be included in the final Bidding Documents.

## ***Section VII. Drawings***

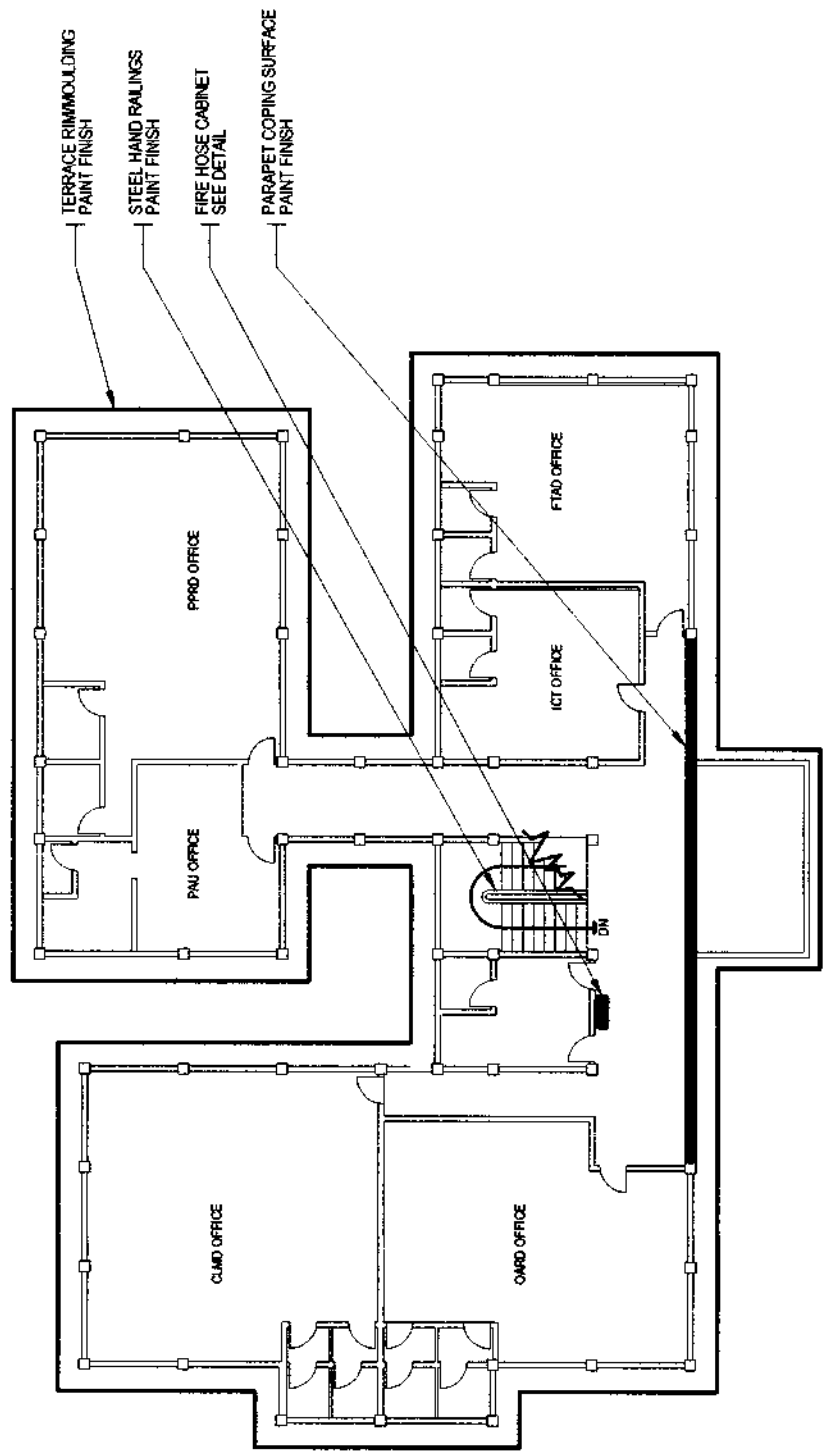
***LOT 1 – PARTIAL REPAIR/  
REHABILITATION/IMPROVEMENT OF  
BUILDING NO. 1 (MAIN BUILDING)***



LOT 1



<p>REPUBLIC OF THE PHILIPPINES <b>DepEd</b> Department of Education EDUCATION FACILITIES SECTION WANGAL, LA TRINIDAD, BENGUET</p>	<p>PREPARED BY: <i>Cullen S. Wiegton</i> CULLEN S. WEGTON DRAFTSMAN II Pg. 281</p>	<p>CHECKED AND REVIEWED: <i>Chris Hadsan</i> CHRIS HADSAN ENGINEER III</p>	<p>RECOMMENDING APPROVAL: <i>Edgar H. Madlaing</i> EDGAR H. MADLAING CHIEF, ESSO</p>	<p>APPROVED BY: <i>Estelal Carino</i> ESTELAL CARINO REGIONAL DIRECTOR</p>	<p>PROJECT TITLE: PARTIAL REPAIR/IMPROVEMENT OF BUILDING NO. 1 (Main Building) LOCATION: WANGAL, LA TRINIDAD, BENGUET SHEET CONTENT AS SHOWN</p>	<p>SHEET NO. A 1 / 1</p>
---	--	--	--	--	--	------------------------------



1
A 2

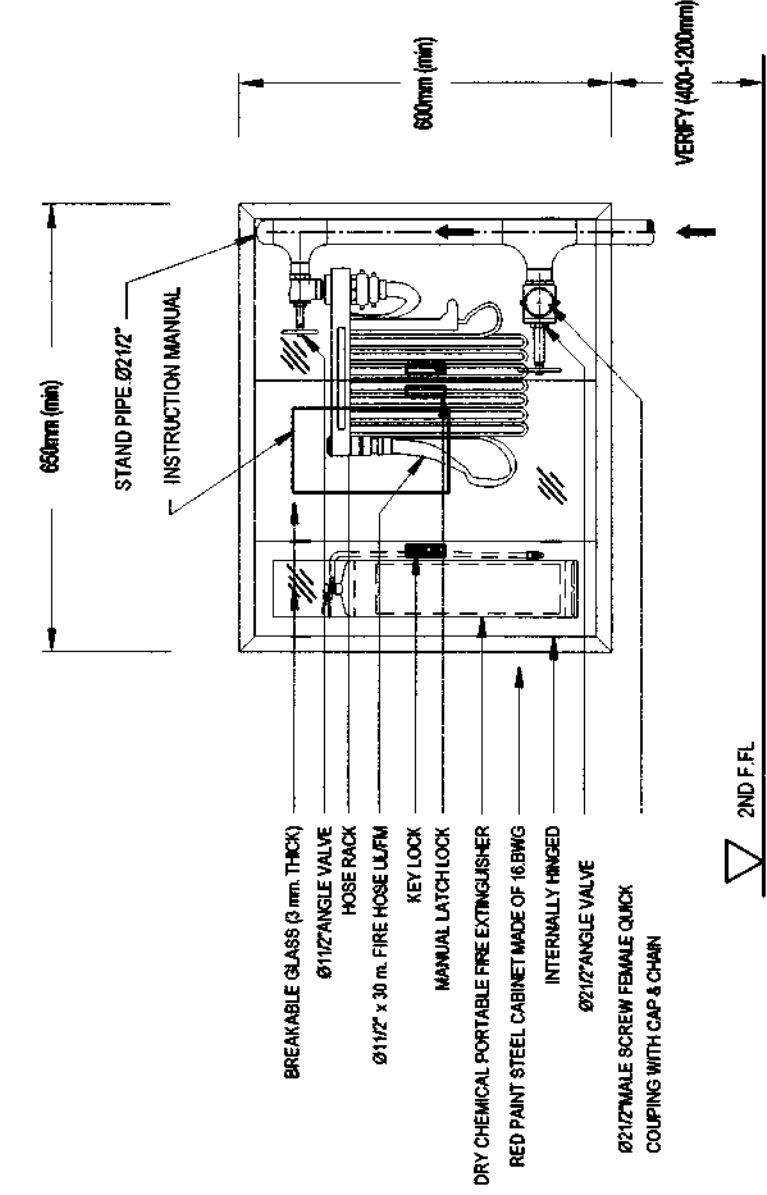
DRAWN

## MAIN BUILDING SECOND FLOOR PLAN

NTS

<p>REPUBLIC OF THE PHILIPPINES</p> <p><b>DepEd</b></p> <p>DEPARTMENT OF EDUCATION</p> <p>EDUCATION FACILITIES SECTION</p> <p>WANGAL, LA TRINIDAD, BENGUET</p>	<p>PREPARED BY:</p> <p><i>Cullen S. Wegton</i></p> <p>CULLEN S. WEGTON</p> <p>DRAFTSMAN II</p> <p>Feb 2021</p>	<p>CHECKED AND REVIEWED:</p> <p><i>Chris B. Padsan</i></p> <p>CHRISTOPHER B. PADSAN</p> <p>ENGINEER III</p>	<p>RECOMMENDING APPROVAL:</p> <p><i>Edgar H. Madlaing</i></p> <p>EDGAR H. MADLAING</p> <p>CHIEF, ESSD</p>	<p>APPROVED BY:</p> <p><i>Estela L. Carino</i></p> <p>ESTELA L. CARINO</p> <p>REGIONAL DIRECTOR</p>	<p>PROJECT TITLE:</p> <p>PARTIAL REPAIR/IMPROVEMENT OF BUILDING NO. 1 (Main Building)</p> <p>LOCATION: WANGAL, LA TRINIDAD, BENGUET</p> <p>SHEET CONTENT: AS SHOWN</p>	<p>SHEET NO.:</p> <div style="border: 1px solid black; border-radius: 50%; padding: 10px; width: 40px; margin: 0 auto;"> <p style="font-size: 24px; text-align: center;">A 2</p> </div>
---	--	---	---	---	--	---

147-1



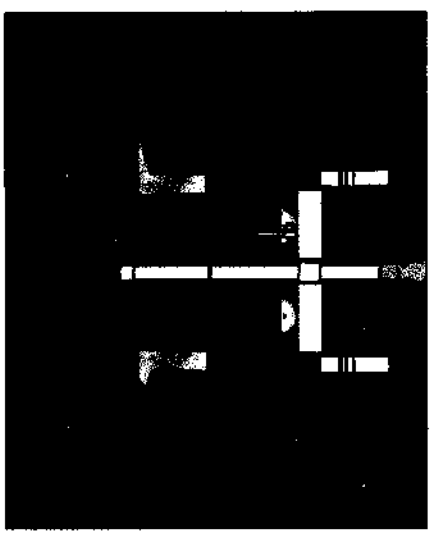
FRONT ELEVATION

SIDE ELEVATION

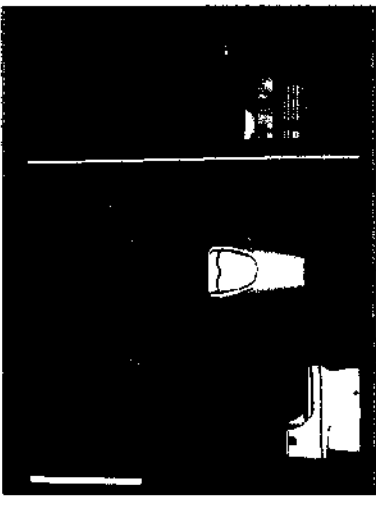
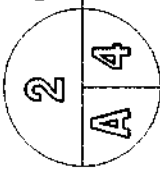
1 FIRE HOSE CABINET DETAIL  
A 3  
NTS  
DRAWN

<p>SHEET NO.:</p> <p>A 3 / 3</p>	<p>PROJECT TITLE:</p> <p>PARTIAL REPAIR/IMPROVEMENT OF BUILDING NO. 1 (Main Building)</p> <p>LOCATION: WANGAL, LA TRINIDAD, BENGUET</p> <p>SHEET CONTENT: AS SHOWN</p>	<p>APPROVED BY:</p> <p><i>[Signature]</i> ESTELA L. CARINO REGIONAL DIRECTOR</p>	<p>RECOMMENDING APPROVAL:</p> <p><i>[Signature]</i> EDGAR H. MADLAING CHIEF, ESSD</p>	<p>CHECKED AND REVIEWED:</p> <p><i>[Signature]</i> CHRISTOPHER B. MADSAN ENGINEER III</p>	<p>PREPARED BY:</p> <p><i>[Signature]</i> CULLEN S. WEGTON DRAFTSMAN/JI</p>	<p>REPUBLIC OF THE PHILIPPINES</p> <p><b>DepEd</b></p> <p>DEPARTMENT OF EDUCATION</p> <p>EDUCATION FACILITIES SECTION</p> <p>WANGAL, LA TRINIDAD, BENGUET</p> <p>Feb 2021</p>
----------------------------------	--	--	---	---	---	---

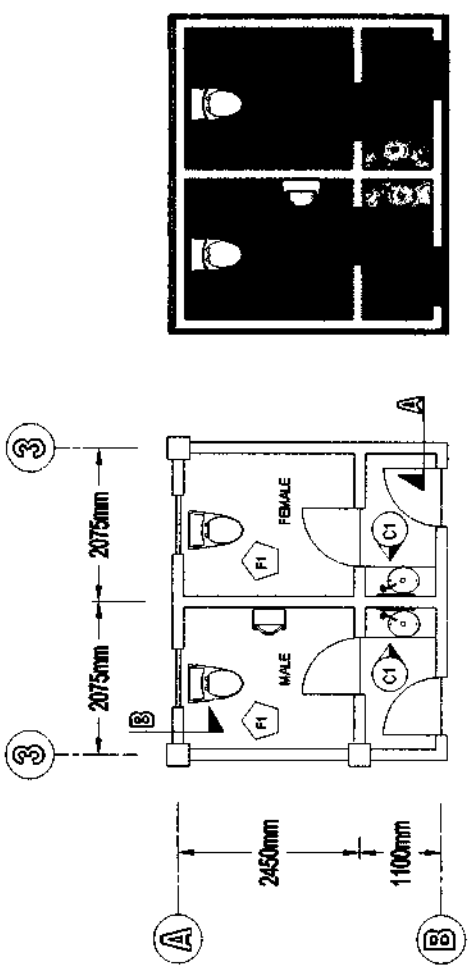
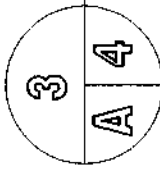
# CURRICULUM AND LEARNING MANAGEMENT DIVISION (CLMD)



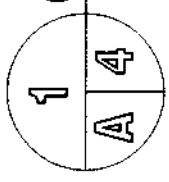
**THRU SECTION A**  
NTS  
DRAWN



**THRU SECTION B**  
NTS  
DRAWN



**1 CLMD CR FLOOR PLAN**  
SCALE  
1:100



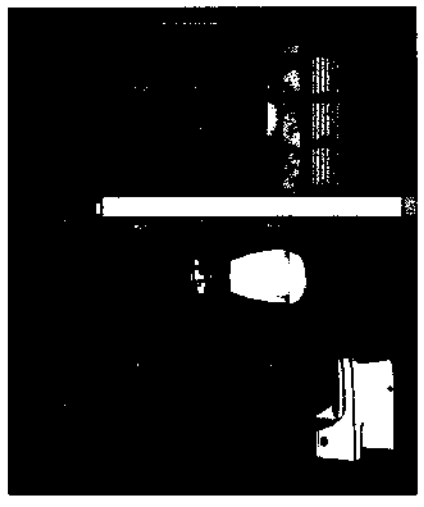
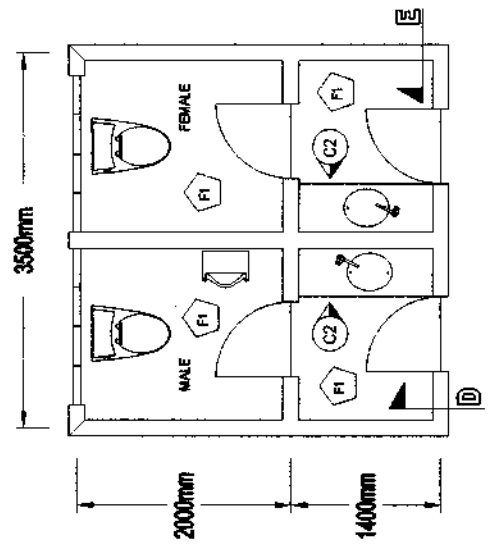
600x1200mm GRANITE TILES  
(NON-SKID)

COUNTER 1 - GRANITE STONE  
LENGTH: 900mm  
WIDTH: +/- 450mm  
HEIGHT: 900mm  
APRON: 150mm

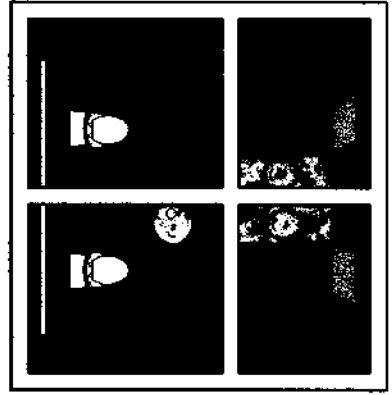


<p><b>REPUBLIC OF THE PHILIPPINES</b> <b>DepEd</b> EDUCATION FACILITIES SECTION WANGAL, LA TRINIDAD, BENGUET</p>	<p>PREPARED BY: <i>Cullen S. Wiegton</i> CULLEN S. WIEGTON DRAFTSMAN II</p>	<p>CHECKED AND REVIEWED: <i>Chris Her B. Hadsan</i> CHRIS HER B. HADSAN ENGINEER III</p>	<p>RECOMMENDING APPROVAL: <i>Edgar H. Madlaing</i> EDGAR H. MADLAING CHIEF, ESSD</p>	<p>APPROVED BY: <i>Estela L. Carino</i> ESTELA L. CARINO REGIONAL DIRECTOR</p>	<p>PROJECT TITLE: PARTIAL REPAIR/IMPROVEMENT OF BUILDING NO. 1 (Main Building)</p> <p>LOCATION: WANGAL, LA TRINIDAD, BENGUET</p> <p>SHEET CONTENT: AS SHOWN</p>	<p>SHEET NO.: <table border="1" style="width: 100%; text-align: center;"> <tr> <td style="width: 50%;">A 4</td> <td style="width: 50%;">4</td> </tr> </table></p>	A 4	4
A 4	4							

# ADMINISTRATIVE DIVISION



**2 SECTION THRU D**  
NTS  
DRAWN



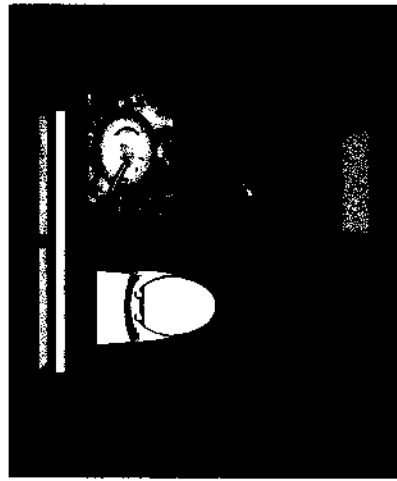
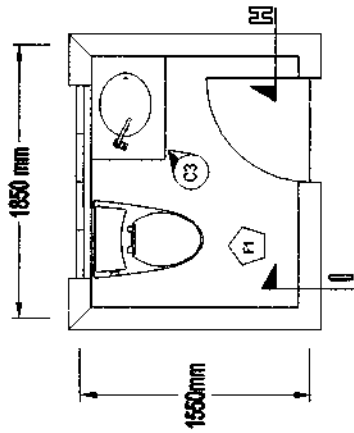
**3 SECTION THRU E**  
NTS  
DRAWN

- 600x1200mm GRANITE TILES (NON-SKID)
- COUNTER 2 - GRANITE STONE
- LENGTH: 1250mm
- WIDTH: +/- 450mm
- HEIGHT: 800mm
- APRON: 150mm

**1 ADMIN GR FLOOR PLAN**  
NTS  
DRAWN

<p>REPUBLIC OF THE PHILIPPINES <b>DepEd</b> BUREAU OF EDUCATION EDUCATION FACILITIES SECTION WANGAL, LA TRINIDAD, BENGUET</p>	<p>PREPARED BY: <i>Cullen S. Wegton</i> CULLEN S. WEGTON DRAFTSMAN II</p>	<p>CHECKED AND REVIEWED: <i>Chris Hadsan</i> CHRIS HADSAN ENGINEER III</p>	<p>RECOMMENDING APPROVAL: <i>Edgar H. Madlaing</i> EDGAR H. MADLAING CHIEF, ESSD</p>	<p>APPROVED BY: <i>Estela L. Carino</i> ESTELA L. CARINO REGIONAL DIRECTOR</p>	<p>PROJECT TITLE: PARTIAL REPAIR/IMPROVEMENT OF BUILDING NO. 1 (Main Building) LOCATION: WANGAL, LA TRINIDAD, BENGUET SHEET CONTENT: AS SHOWN</p>	<p>SHEET NO.: <b>A 5</b> <b>5</b></p>
---	---	--	--	--	---	---

# PUBLIC AFFAIRS UNIT (PAU)



600x1200mm GRANITE TILES  
(NON-SKID)

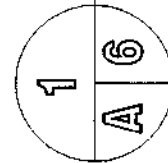


COUNTER 3- GRANITE STONE  
INCLUDING SIDE AND APRON  
LENGTH: 700mm  
WIDTH: +/- 500mm  
HEIGHT: 800mm  
APRON: 150mm



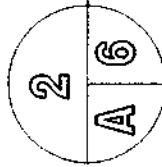
## 1 PAU CR FLOOR PLAN

SCALE  
1:100 m



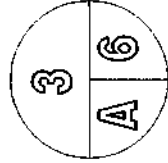
## 2 SECTION THRU H

NTS  
DRAWN



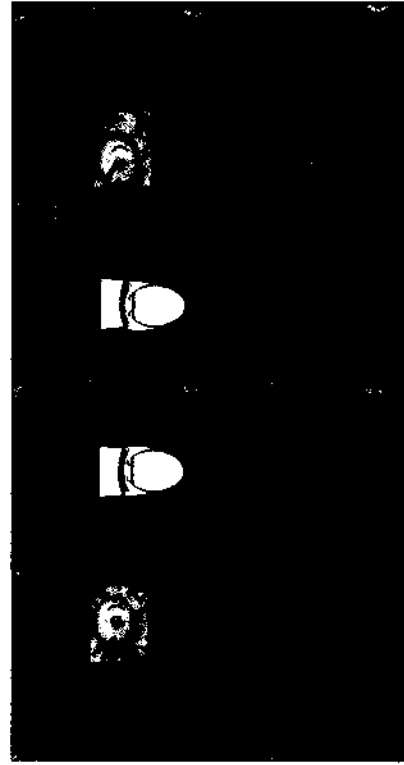
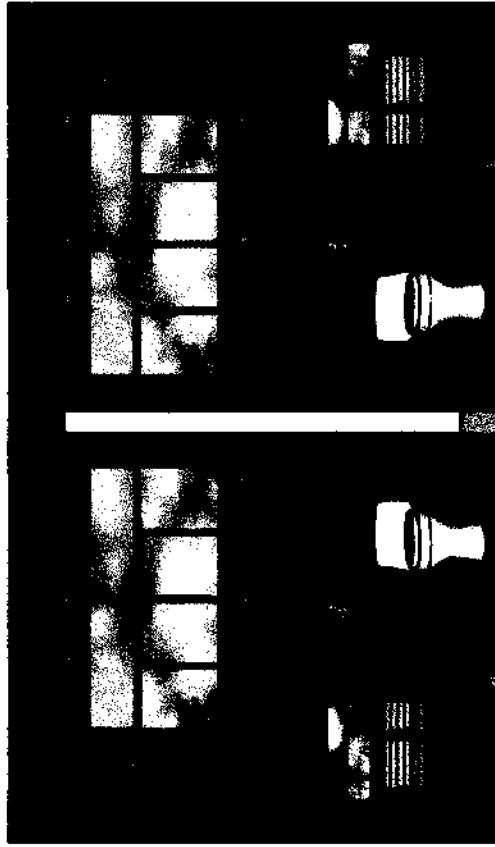
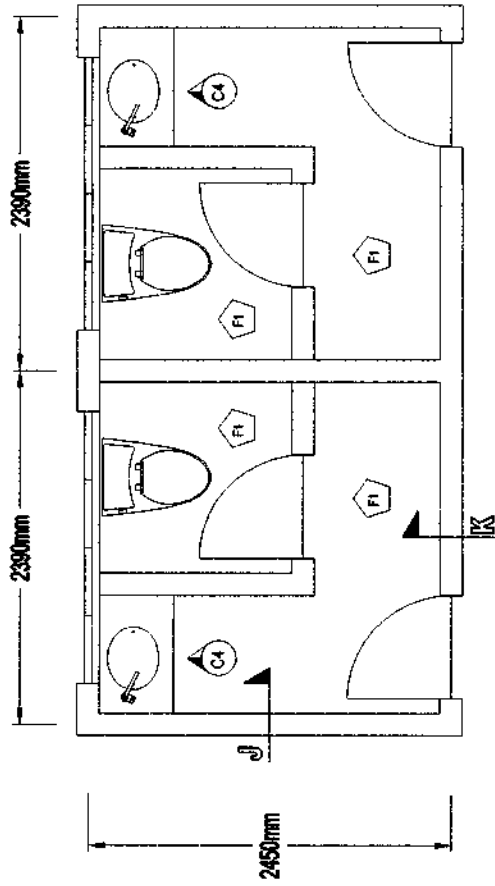
## 3 SECTION THRU I

NTS  
DRAWN



PREPARED BY:  CULLEN S. WEGTON DRAFTSMAN II PLS 381	CHECKED AND REVIEWED:  CHRISTOPHER B. JADSAN ENGINEER III	RECOMMENDING APPROVAL:  EDGAR H. MADLAING CHIEF, ESSD	APPROVED BY:  ESTELA L. CARINO REGIONAL DIRECTOR	PROJECT TITLE: PARTIAL REPAIR/IMPROVEMENT OF BUILDING NO. 1 (Main Building)	SHEET NO.: 
				LOCATION: WANGAL, LA TRINIDAD, BENGUET	SHEET CONTENT: AS SHOWN

# POLICY, PLANNING AND RESEARCH DIVISION (PPRD)



2 SECTION THRU J  
A 7  
DRAWN  
NTS

3 SECTION THRU K  
A 7  
DRAWN  
NTS

600x1200mm GRANITE TILES  
(NON-SKID)

COUNTER + GRANITE STONE  
LENGTH: 800mm  
WIDTH: +500mm  
HEIGHT: 800mm  
APRON: 150mm

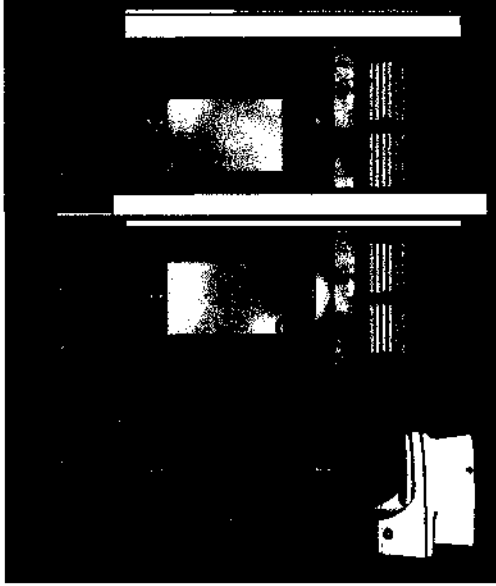
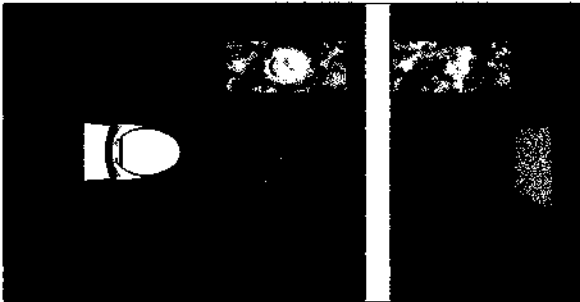
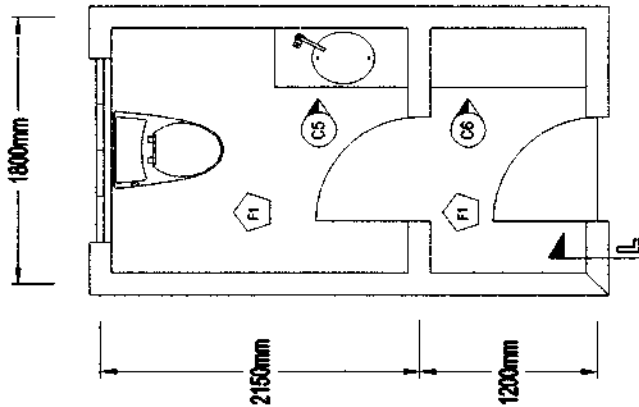
1 PPRD CR FLOOR PLAN  
A 7  
DRAWN  
1:50

PREPARED BY:  CULLEN S. WEGTON DRAFTSMAN II Feb 2011	CHECKED AND REVIEWED:  CHRISTOPHER B. PADSAN ENGINEER III	RECOMMENDING APPROVAL:  EDGAR H. MADLAING CHIEF, ESSD	APPROVED BY:  ESTELA L. CARINO REGIONAL DIRECTOR	PROJECT TITLE: PARTIAL REPAIR/IMPROVEMENT OF BUILDING NO. 1 (Main Building)	SHEET NO.: 
				LOCATION: WANGAL, LA TRINIDAD, BENGUET	

REPUBLIC OF THE PHILIPPINES  
  
**DEPED**  
 DEPARTMENT OF EDUCATION  
 EDUCATION FACILITIES SECTION  
 WANGAL, LA TRINIDAD, BENGUET

LOT 1

# FINANCE DIVISION



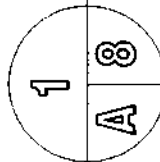
**F1** 600x1200mm GRANITE TILES  
(NON-SKID)

**CS** COUNTER 5- GRANITE STONE  
INCLUDING SIDE AND APRON

LENGTH: 860mm  
WIDTH: +/- 500mm  
HEIGHT: 800mm  
APRON: 150mm

**C6** COUNTER 6- GRANITE STONE

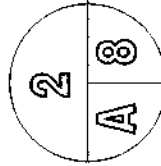
LENGTH: 1060mm  
WIDTH: +/- 500mm  
HEIGHT: 800mm  
APRON: 150mm



## FINANCE DIVISION CR FLOOR PLAN

1:50 m

DRAWN



## SECTION THRU L

DRAWN

NTS

REPUBLIC OF THE PHILIPPINES

**DepEd**  
BUREAU OF EDUCATION  
EDUCATION FACILITIES SECTION  
WANGAL, LA TRINIDAD, BENGUET

CM

PREPARED BY:

*Cullen S. Wegton*  
CULLEN S. WEGTON  
DRAFTSMAN II

CHECKED AND REVIEWED:

*Christopher B. Hadsan*  
CHRISTOPHER B. HADSAN  
ENGINEER III

RECOMMENDING APPROVAL:

*Edgar H. Madlaing*  
EDGAR H. MADLAING  
CHIEF, ESSD

APPROVED BY:

*Estela L. Carino*  
ESTELA L. CARINO  
REGIONAL DIRECTOR

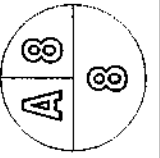
PROJECT TITLE:

PARTIAL/REPAIR/IMPROVEMENT OF BUILDING NO. 1  
(Main Building)

LOCATION: WANGAL, LA TRINIDAD, BENGUET

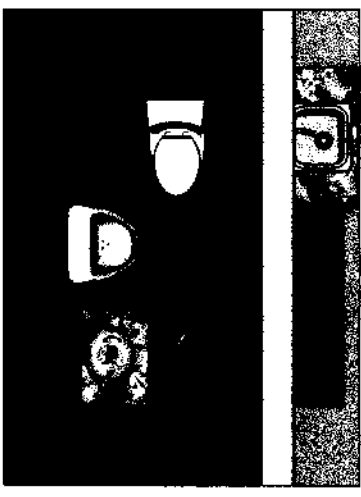
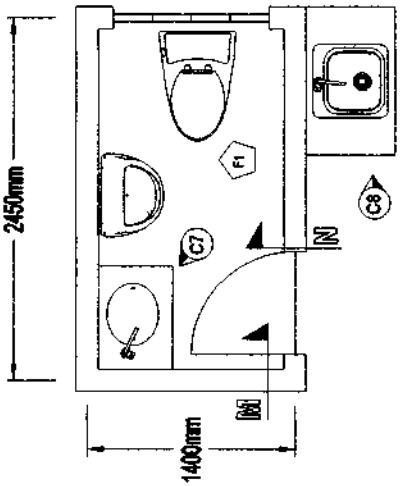
SHEET CONTENT: AS SHOWN

SHEET NO.:





# ORD- EXTENSION

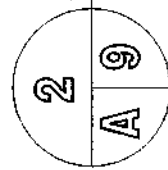
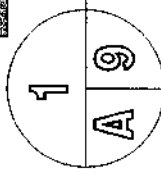


**1 ORD-EXT GR FLOOR PLAN**  
1:50 m  
DRAWN

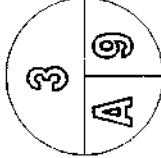
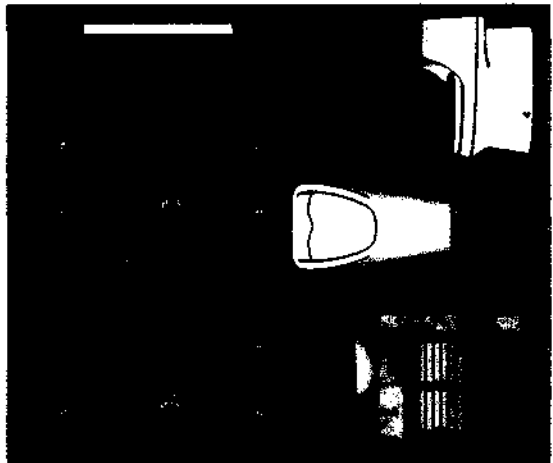
**FI**  
600x1200mm GRANITE TILES  
(NON-SKID)

**C7**  
COUNTER 7- GRANITE STONE  
INCLUDING SIDE AND APRON  
LENGTH 700mm  
WIDTH +/- 500mm  
HEIGHT 800mm  
APRON 150mm

**C8**  
COUNTER 8- GRANITE STONE  
INCLUDING SIDE, APRON  
AND BACKSPLASH  
LENGTH 1000mm  
WIDTH +/- 600mm  
HEIGHT 800mm  
APRON 150mm  
BACK SPLASH 600x1000mm



**2 SECTION THRU M**  
DRAWN



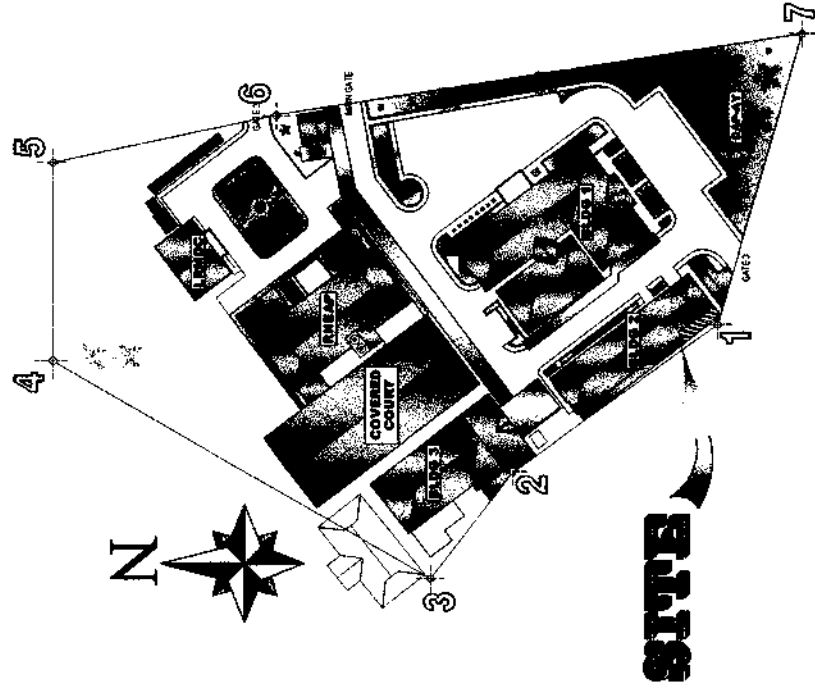
**3 SECTION THRU N**  
DRAWN



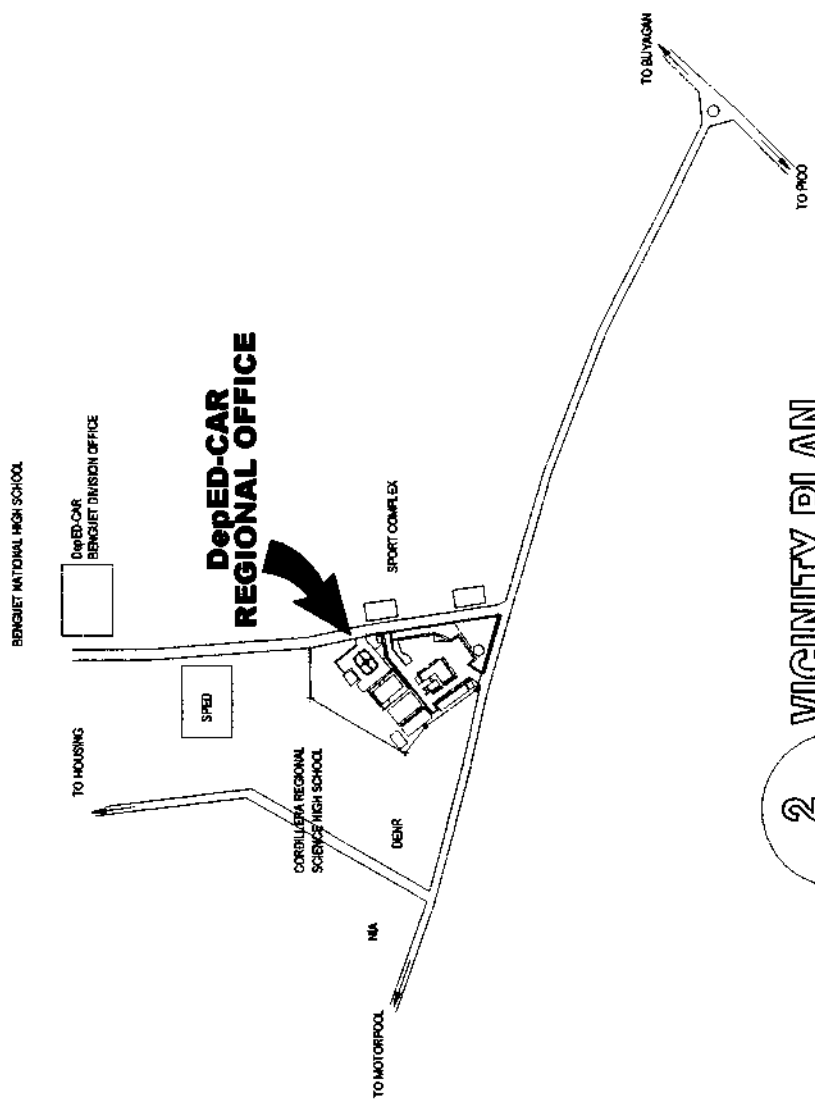
<p>REPUBLIC OF THE PHILIPPINES <b>DepEd</b> DEPARTMENT OF EDUCATION EDUCATION FACILITIES SECTION WANGAL, LA TRINIDAD, BENGUET</p>	<p>PREPARED BY: <i>Cullen S. Wegton</i> CULLEN S. WEGTON DRAFTSMAN II Feb 2021</p>	<p>CHECKED AND REVIEWED: <i>Christina B. Hadson</i> CHRISTINA B. HADSON ENGINEER III</p>	<p>RECOMMENDING APPROVAL: <i>Edgar H. Madlaing</i> EDGAR H. MADLAING CHIEF, ESSD</p>	<p>APPROVED BY: <i>Estela L. Carino</i> ESTELA L. CARINO REGIONAL DIRECTOR</p>	<p>PROJECT TITLE: PARTIAL REPAIR/IMPROVEMENT OF BUILDING NO. 1 (Main Building) LOCATION: WANGAL, LA TRINIDAD, BENGUET SHEET CONTENT: AS SHOWN</p>	<p>SHEET NO.: A 9 / 9</p>
	<p>LOT 1</p>					

***LOT 2 – REPAIR/ REHABILITATION OF  
BUILDING NO. 2 (SNC BUILDING)***

LOT 2



**1 SITE DEVELOPMENT PLAN**  
DRAWN NOT TO SCALE  
A 1

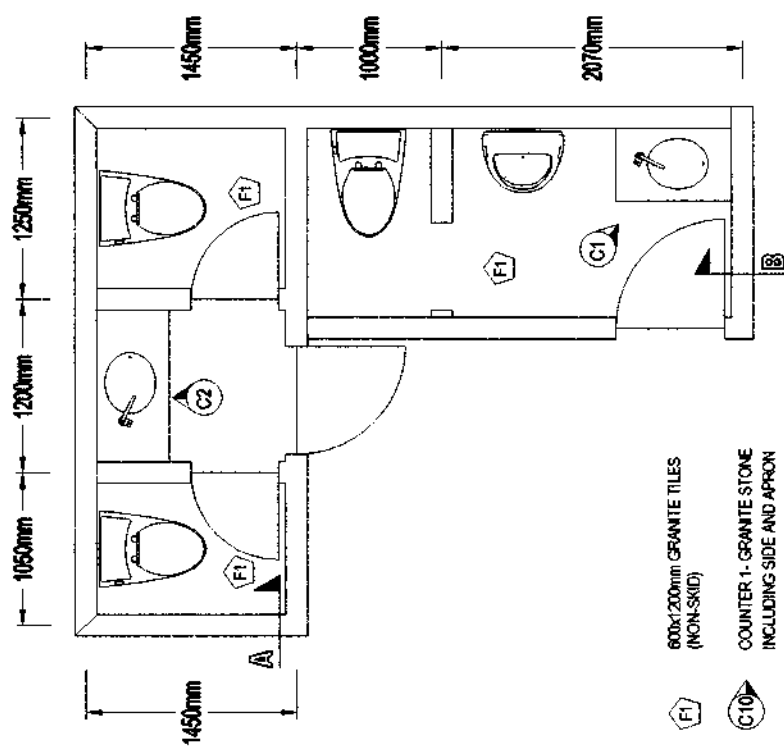


**2 VICINITY PLAN**  
DRAWN NOT TO SCALE  
A 1

<p>REPUBLIC OF THE PHILIPPINES <b>DepEd</b> BUREAU OF EDUCATION WANGAL, LA TRINIDAD, BENGUET</p>	<p>PREPARED BY: <i>Cullen S. Wegton</i> CULLEN S. WEGTON DRAFTSMAN II</p>	<p>CHECKED AND REVIEWED: <i>Christopher A. Hadsan</i> CHRISTOPHER A. HADSAN ENGINEER III</p>	<p>RECOMMENDING APPROVAL: <i>Edgar H. Madlaing</i> EDGAR H. MADLAING CHIEF, ESSD</p>	<p>APPROVED BY: <b>ESTELA L. CARINO</b> REGIONAL DIRECTOR</p>	<p>PROJECT TITLE: REPAIR/REHABILITATION OF BUILDING NO. 2</p> <p>LOCATION: WANGAL, LA TRINIDAD, BENGUET</p> <p>SHEET CONTENT: AS SHOWN</p>	<p>SHEET NO.: <b>A 1</b> 1</p>
	<p>Feb 2021</p>					

LOT 2-

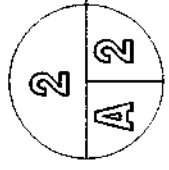
# STEPHEN N. CAPUYAN HALL



- 600x1200mm GRANITE TILES (NON-SKID)
- COUNTER 1- GRANITE STONE INCLUDING SIDE AND APRON  
LENGTH: 800mm  
WIDTH: +/- 500mm  
HEIGHT: 800mm  
APRON: 150mm
- COUNTER 2- GRANITE STONE  
LENGTH: 1050mm  
WIDTH: +/- 500mm  
HEIGHT: 800mm  
APRON: 150mm

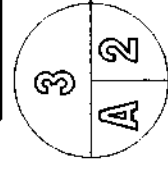
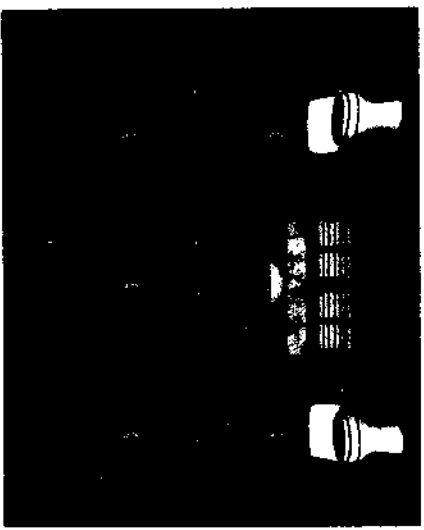
## 1 SNC HALL CR FLOOR PLAN

1:50m DRAWN



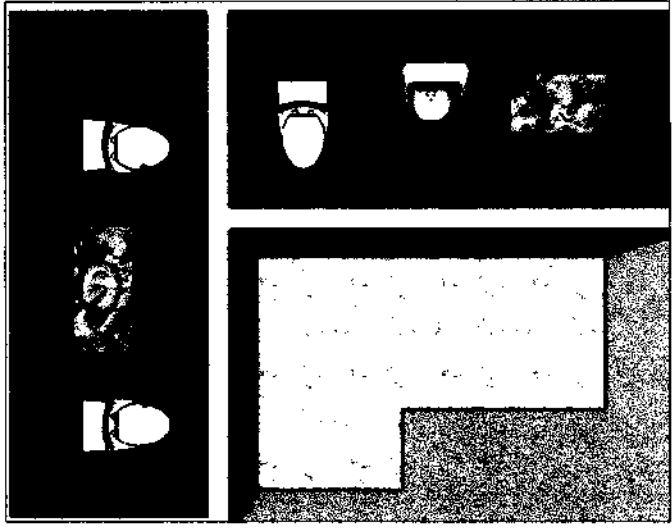
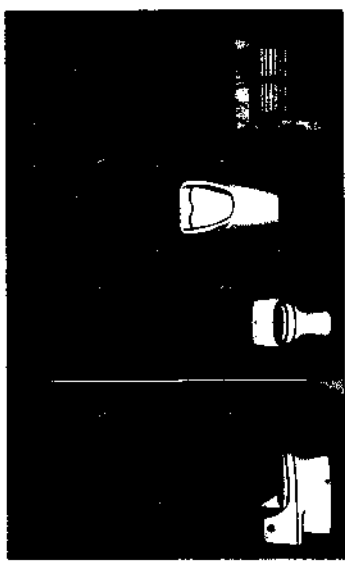
### SECTION THRU O

NTS DRAWN



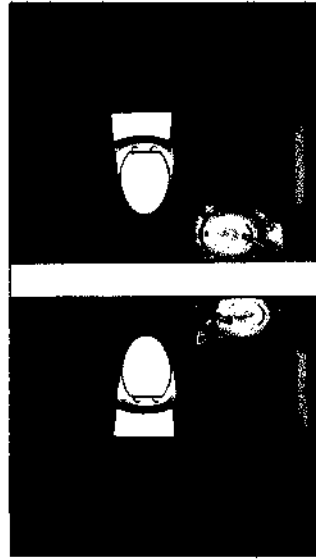
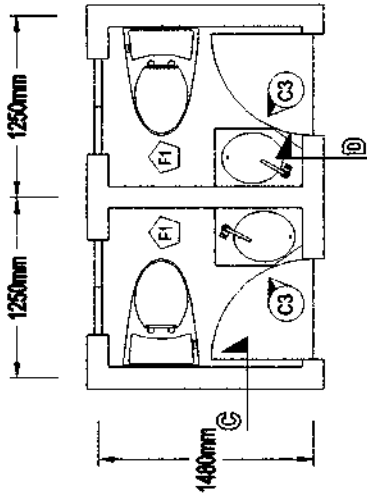
### SECTION THRU P

NTS DRAWN



<p>REPUBLIC OF THE PHILIPPINES <b>DepEd</b> BUREAU OF EDUCATION EDUCATION FACILITIES SECTION WANGAL, LA TRINIDAD, BENGUET</p>	<p>PREPARED BY:</p> <p>CULLEN S. WEGTON DRAFTSMAN II</p>	<p>CHECKED AND REVIEWED:</p> <p>CHRISTOPHER B. HADSAN ENGINEER III</p>	<p>RECOMMENDING APPROVAL:</p> <p>EDGAR H. MADLAING CHIEF, ESSD</p>	<p>APPROVED BY:</p> <p>ESTELA L. CARINO REGIONAL DIRECTOR</p>	<p>PROJECT TITLE:</p> <p>REPAIR/ REHABILITATION OF VARIOUS COMFORT ROOMS AT THE DEP-ED-CAR REGIONAL OFFICE</p>	<p>LOCATION: WANGAL, LA TRINIDAD, BENGUET</p>	<p>SHEET NO.:</p> <p>2</p>
	<p>SHEET CONTENT: AS SHOWN</p>		<p>SHEET NO.:</p> <p>A 2</p>		<p>SHEET NO.:</p> <p>2</p>		

EDUCATION SUPPORT SERVICES DIVISION



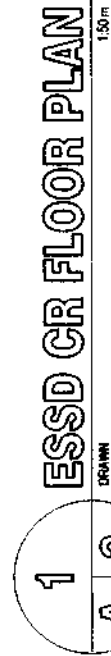
600x1200mm GRANITE TILES (NON-SKID)



COUNTER 3- GRANITE STONE INCLUDING SIDE AND APRON



LENGTH: 600mm  
WIDTH: +/- 500mm  
HEIGHT: 800mm  
APRON: 150mm

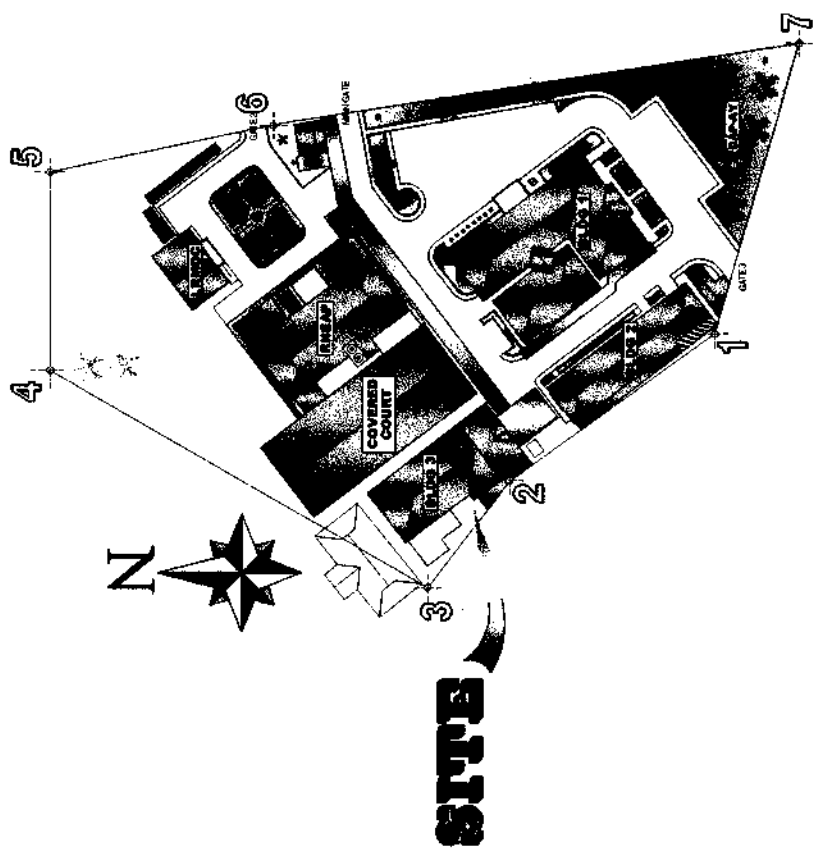


SHEET NO.:		
PROJECT TITLE:	REPAIR/ REHABILITATION OF VARIOUS COMFORT ROOMS AT THE DEPED-CAR REGIONAL OFFICE LOCATION: WANGAL, LA TRINIDAD, BENGUET SHEET CONTENT: AS SHOWN	
APPROVED BY:	ESTELA L. CARINO REGIONAL DIRECTOR	 EDGAR H. MADLAING CHIEF, ESSD
CHECKED AND REVIEWED:	 CHRISTOPHER M. HADSAN ENGINEER III	 CULLEN S. WEIGTON DRAFTSMAN II
PREPARED BY: CULLEN S. WEIGTON DRAFTSMAN II	RECOMMENDING APPROVAL:  EDGAR H. MADLAING CHIEF, ESSD	P-8 2021

REPUBLIC OF THE PHILIPPINES  
**DepEd**  
 DEPARTMENT OF EDUCATION  
 EDUCATION FACILITIES SECTION  
 WANGAL, LA TRINIDAD, BENGUET

***LOT 3 – REPAIR/ REHABILITATION OF  
BUILDING NO. 3***

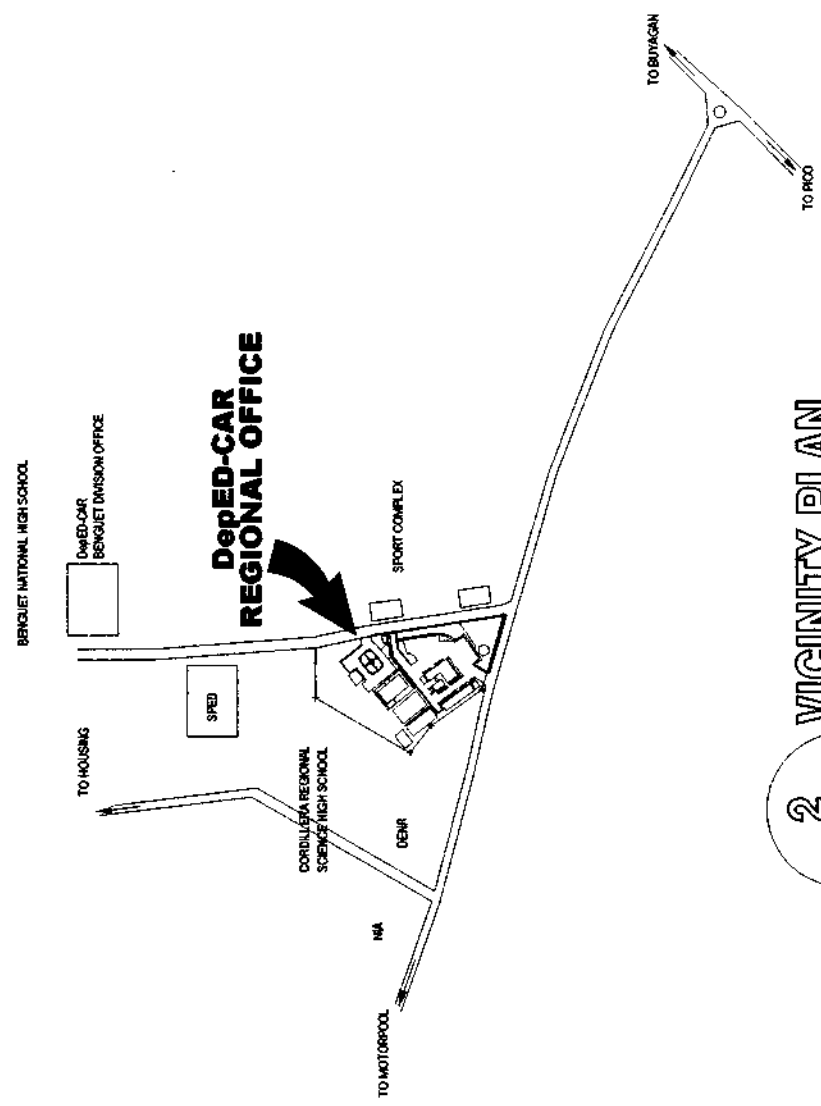
LOT 3



1  
A 1

**SITE DEVELOPMENT PLAN**

DRAWN NOT TO SCALE



2  
A 1

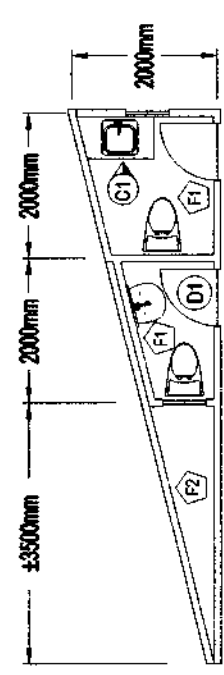
**VICINITY PLAN**

DRAWN NOT TO SCALE

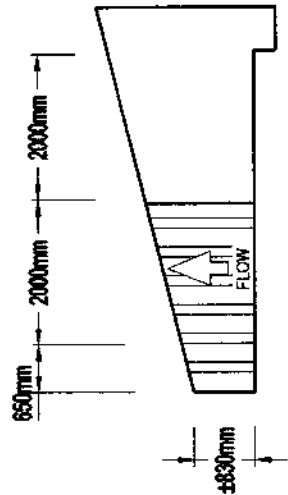
<p>REPUBLIC OF THE PHILIPPINES <b>DepEd</b> DEPARTMENT OF EDUCATION EDUCATION FACILITIES SECTION WANGAL, LA TRINIDAD, BENGUET</p>	<p>PREPARED BY: <i>Cullen S. Wegton</i> CULLEN S. WEGTON DRAFTSMAN II</p>	<p>CHECKED AND REVIEWED: <i>Christopher Z. Hadsan</i> CHRISTOPHER Z. HADSAN ENGINEER III</p>	<p>RECOMMENDING APPROVAL: <i>Edgar H. Madlaing</i> EDGAR H. MADLAING CHIEF, ESSD</p>	<p>APPROVED BY: <i>Estela L. Carino</i> ESTELA L. CARINO REGIONAL DIRECTOR</p>	<p>PROJECT TITLE: REPAIR/REHABILITATION OF BUILDING NO. 3</p>	<p>LOCATION: WANGAL, LA TRINIDAD, BENGUET</p>	<p>SHEET CONTENT: AS SHOWN</p>	<p>SHEET NO.: A 1 1</p>
---	---	--	--	--	---	---	--------------------------------	---------------------------------

lot 3

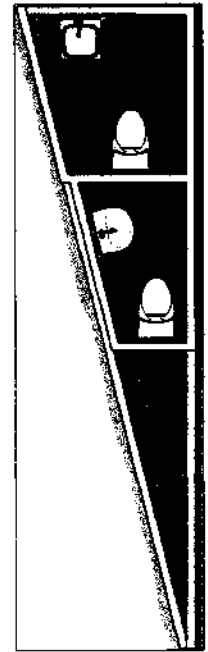
# PAY ROLL SERVICES UNIT (PSU)



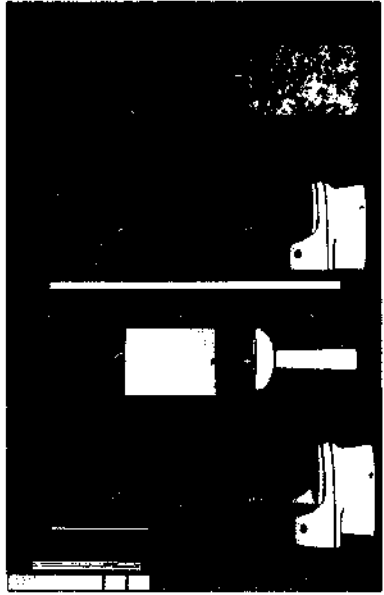
**1 FLOOR PLAN**  
1:100m  
DRAWN  
A 2



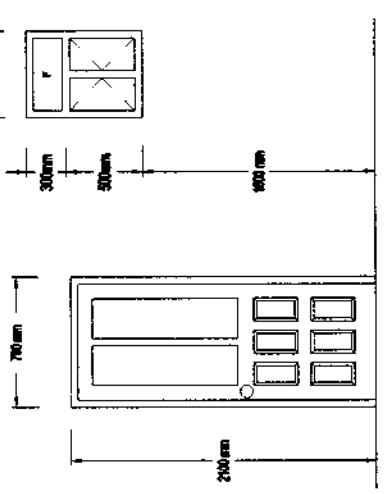
**4 ROOF PLAN**  
1:100m  
DRAWN  
A 2



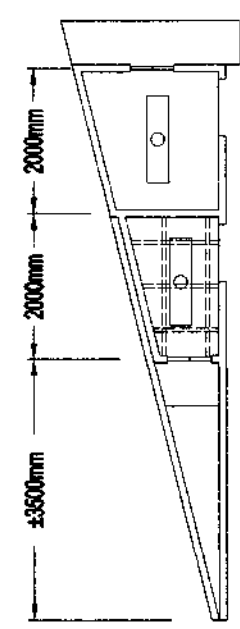
**3 REFLECTIVE CEILING PLAN**  
1:100m  
DRAWN  
A 2



- F1 600x1200mm GRANITE TILES (NON-SKID)
- F2 PLAIN CEMENT FINISH
- C1 COUNTER 1 - GRANITE TILE  
LENGTH: 900mm  
WIDTH: 600mm  
HEIGHT: 900mm  
APRON: 150mm



**5 DOOR AND WINDOW SCHEDULE**  
1:100m  
DRAWN  
A 2

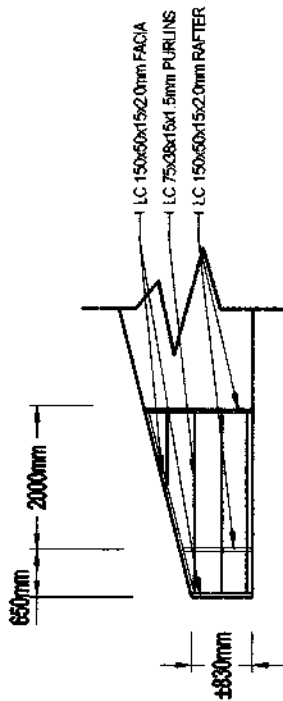


**2 LONGITUDINAL SECTION**  
1:100m  
DRAWN  
A 2

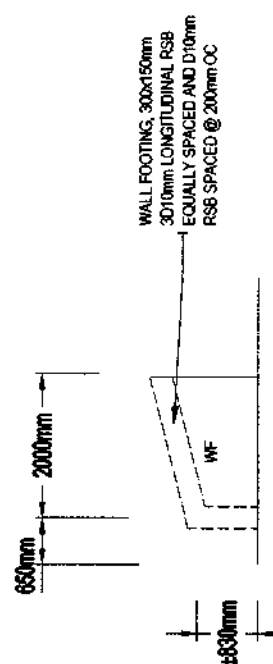
<p>REPUBLIC OF THE PHILIPPINES <b>DepEd</b> BUREAU OF EDUCATION EDUCATION FACILITIES SECTION WANGAL, LA TRINIDAD, BENGUET</p>	<p>PREPARED BY: <i>Cullen S. Wegton</i> CULLEN S. WEGTON DRAFTSMAN II</p>	<p>CHECKED AND REVIEWED: <i>Christopher B. Hadsan</i> CHRISTOPHER BHADSAN ENGINEER III</p>	<p>RECOMMENDING APPROVAL: <i>Edgar H. Madlaing</i> EDGAR H. MADLAING CHIEF, ESSD</p>	<p>APPROVED BY: <i>Estela L. Carino</i> ESTELA L. CARINO REGIONAL DIRECTOR</p>	<p>PROJECT TITLE: REPAIR/REHABILITATION OF BUILDING NO. 3</p>	<p>SHEET NO.: A 2 / 2</p>
	<p>REPAIR/REHABILITATION OF BUILDING NO. 3</p> <p>LOCATION: WANGAL, LA TRINIDAD, BENGUET</p> <p>SHEET CONTENT: AS SHOWN</p>					



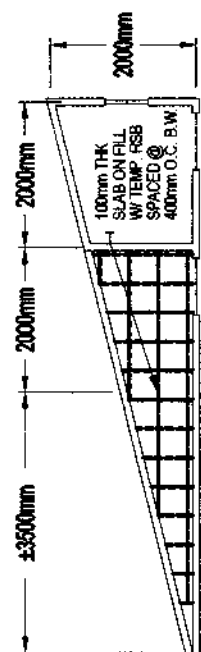
# PAY ROLL SERVICES UNIT (PSU)



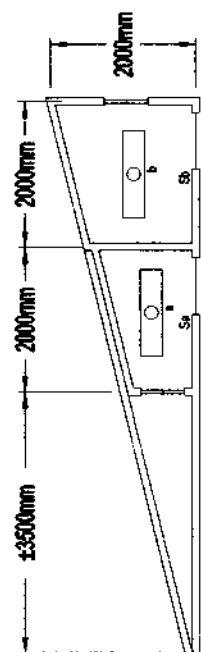
**1 ROOF FRAMING PLAN**  
1:100m  
DRAWN  
S 3



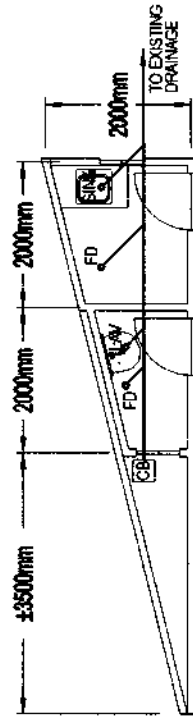
**2 FOUNDATION PLAN**  
1:100m  
DRAWN  
S 3



**3 FLOOR FRAMING PLAN**  
1:100m  
DRAWN  
S 3



**1 LIGHTING LAY OUT**  
1:100m  
DRAWN  
E 3



**1 SANITARY LAYOUT**  
1:100m  
DRAWN  
P 3

<p>REPUBLIC OF THE PHILIPPINES</p> <p>DEPARTMENT OF EDUCATION</p> <p>EDUCATION FACILITIES SECTION</p> <p>WANGAL, LA TRINIDAD, BENGUET</p>	<p>PREPARED BY:</p> <p>CULLEN S. WEYTON DRAFTSMAN II</p>	<p>CHECKED AND REVIEWED:</p> <p>CHRISTOPHER HADSAN ENGINEER III</p>	<p>RECOMMENDING APPROVAL:</p> <p>EDGAR H. MADLAING CHIEF, ESSD</p>	<p>APPROVED BY:</p> <p>ESTELA L. CARINO REGIONAL DIRECTOR</p>	<p>PROJECT TITLE:</p> <p>REPAIR/REHABILITATION OF BUILDING NO. 3</p>	<p>SHEET NO.</p> <p>STEP 3</p> <p>3</p>
	<p>LOCATION: WANGAL, LA TRINIDAD, BENGUET</p> <p>SHEET CONTENT: AS SHOWN</p>					

***Section VIII. Bill of Quantities***

***LOT 1 – PARTIAL REPAIR/  
REHABILITATION/ IMPROVEMENT OF  
BUILDING NO. 1 (MAIN BUILDING)***

( insert letter head here )

## PROGRAM OF WORKS BILL OF QUANTITIES

OFFICE: <b>DepED - CAR REGIONAL OFFICE</b>			DATE: March 2021			
REGION: CAR			BUDGET ALLOCATION:			
DIVISION:			ESTIMATED GOVERNMENT EXPENSES:			
PROJECT DESCRIPTION: <b>PARTIAL REPAIR/REHABILITATION/IMPROVEMENT OF BUILDING NO. 1 (Main Building)</b>			APPROVED BUDGET FOR THE PROJECT:			
PLAN NO.:			COMPLETION PERIOD: 75 CD			
LOCATION: DepED- CAR Regional Office COMPOUND, WANGAL, LA TRINIDAD, BENGUET			REQUIRED MANPOWER: Project Engineer, Foreman, Tile Setter Skilled Worker and Laborers			
			REQUIRED EQUIPMENTS: Assorted Power and Hand Tools			
ITEM NO.	WORK DESCRIPTION	% OF TOTAL	UNIT	QUANTITY	TOTAL COST	REMARKS
A	General Requirements		lot	1.00		
2.00	Concreting Works		cu.m	0.15		
3.00	Rebar Works		kg	14.77		
4.00	Formworks		lot	1.00		
6.00	Doors and Windows		lot	1.00		
9.00	Carpentry Works		lot	1.00		
10.00	Electrical Works		lot	1.00		
11.00	Plumbing Works		lot	1.00		
12.00	Sanitary Works		lot	1.00		
13.00	Painting Works		sq.m	15.05		
14.00	Tile Works		sq.m	74.98		
2.00	Concreting Works		cu.m	0.12		
3.00	Rebar Works		kg	12.44		
4.00	Formworks		lot	1.00		
6.00	Doors and Windows		lot	1.00		
9.00	Carpentry Works		lot	1.00		
10.00	Electrical Works		lot	1.00		
11.00	Plumbing Works		lot	1.00		
12.00	Sanitary Works		lot	1.00		
13.00	Painting Works		sq.m	16.61		
14.00	Tile Works		sq.m	65.32		
2.00	Concreting Works		cu.m	0.07		
3.00	Rebar Works		kg	7.33		
4.00	Formworks		lot	1.00		
5.00	Masonry Works		sq.m.	0.44		
6.00	Doors and Windows		lot	1.00		
9.00	Carpentry Works		lot	1.00		
10.00	Electrical Works		lot	1.00		

ITEM NO.	WORK DESCRIPTION	% OF TOTAL	UNIT	QUANTITY	TOTAL COST	REMARKS
11.00	Plumbing Works		lot	1.00		
12.00	Sanitary Works		lot	1.00		
13.00	Painting Works		sq.m	5.36		
14.00	Tile Works		sq.m	16.11		
<b>Subtotal 1</b>						
2.00	Concreting Works		cu.m	0.09		
3.00	Rebar Works		kg	8.88		
4.00	Formworks		lot	1.00		
6.00	Doors and Windows		lot	1.00		
9.00	Carpentry Works		lot	1.00		
10.00	Electrical Works		lot	1.00		
11.00	Plumbing Works		lot	1.00		
12.00	Sanitary Works		lot	1.00		
13.00	Painting Works		sq.m	10.05		
14.00	Tile Works		sq.m	67.68		
<b>Subtotal 2</b>						
2.00	Concreting Works		cu.m	0.08		
3.00	Rebar Works		kg	8.66		
4.00	Formworks		lot	1.00		
5.00	Masonry Works		sq.m	0.35		
6.00	Doors and Windows		lot	1.00		
9.00	Carpentry Works		lot	1.00		
10.00	Electrical Works		lot	1.00		
11.00	Plumbing Works		lot	1.00		
12.00	Sanitary Works		lot	1.00		
13.00	Painting Works		sq.m	6.13		
14.00	Tile Works		sq.m	34.99		
<b>Subtotal 3</b>						
2.00	Concreting Works		cu.m	0.10		
3.00	Rebar Works		kg	10.55		
4.00	Formworks		lot	1.00		
5.00	Masonry Works		sq.m	0.83		
6.00	Doors and Windows		lot	1.00		
9.00	Carpentry Works		lot	1.00		
10.00	Electrical Works		lot	1.00		
11.00	Plumbing Works		lot	1.00		
12.00	Sanitary Works		lot	1.00		
13.00	Painting Works		sq.m	4.33		
14.00	Tile Works		sq.m	21.63		
<b>Subtotal 4</b>						
11.00	Plumbing Works		lot	1.00		Rough-in
13.00	Painting Works		sq.m	146.88		Partial @ Bldg No. 1
I.	DIRECT COST					
II.	INDIRECT COST (22% of I)					
III.	WITH HOLDING TAX AND VAT ( 5% OF I + II )					
IV.	<b>TOTAL CONSTRUCTION COST</b>					

Prepared by:

\_\_\_\_\_  
Contractor/Representative

( insert letter head here )

**Project:** PARTIAL REPAIR/REHABILITATION/IMPROVEMENT OF BUILDING NO. 1 (Main Building)  
**Location:** DepEd CAR Compound, Wangal, La Trinidad, Benguet

## DETAILED ESTIMATE

I.D. NO	DESCRIPTION	UNIT	QTY	UNIT COST		TOTAL COST		GRAND TOTAL
				MATERIAL	LABOR	MATERIAL	LABOR	
<b>A</b>	<b>General Requirements</b>	lot	<b>1.00</b>					
	Mobilization/Temporary Structures, Utilities and Services/Demobilization	lot	1.00					
	Safety and Health	lot	1.00					
	Project Billboard	lot	1.00					
	<b>Sub-total</b>							
<b>2.00</b>	<b>Concreting Works</b>	cu.m	<b>0.15</b>					
2.010	Portland Cement	bag	1.50					
2.030	Washed Sand	cu.m	0.20					
2.040	Crushed Gravel 1"	cu.m	0.10					
	<b>Sub-total</b>							
<b>3.00</b>	<b>Rebar Works</b>	kg	<b>14.77</b>					
3.010	Deformed Round Bars, Grade 33	kg	14.77					
3.040	G.I. Tie Wire	kg	0.25					
	<b>Sub-total</b>							
<b>4.00</b>	<b>Formworks</b>	lot	<b>1.00</b>					
4.010	Rough Lumber	bd.ft	10.67					
4.050	Phenolic Board, 1/2"x4"x8"	pc	1.00					
4.040	CWN, Assorted	kg	1.00					
	<b>Sub-total</b>							
<b>6.00</b>	<b>Doors and Windows</b>	lot	<b>1.00</b>					
6.160	Panel Door 0.70m x 2.10m	pc	2.00					
6.211	Flush Door 0.60m x ±1.50m	pc	2.00					
6.381	Hinges, Stainless 3-1/2" x 3-1/2", Heavy Duty, Five Knuckles	pa	8.00					
6.391	4" SS Heavy Duty Barrel Bolt	set	2.00					
6.330	Entrance, Lockset, Lever Type	set	2.00					
	<b>Sub-total</b>							
<b>9.00</b>	<b>Carpentry Works</b>	lot	<b>1.00</b>					
	<b>Ceiling</b>	sq.m	<b>13.26</b>					
9.710	250x3028mm Woodgrained PVC Ceiling Panel	pc	22.00					
9.771	14.5x63x3028mm Cornice PVC,	pc	8.00					
9.780	Construction Adhesive, 300cc	pc	2.00					
9.640	Assorted Nails	kg	1.00					
	<b>Lavatory Counter Cabinets</b>							
6.663	Half-screened Aluminum Framed Cupboards complete with Hardware and Accessories	sq.ft	17.22					
	<b>Sub-total</b>							

LD. NO	DESCRIPTION	UNIT	QTY	UNIT COST		TOTAL COST		GRAND TOTAL
				MATERIAL	LABOR	MATERIAL	LABOR	
<b>10.00</b>	<b>Electrical Works</b>	<b>lot</b>	<b>1.00</b>					
	<b>Roughing-Ins</b>							
	Electrical Conduit PVC, 20mmØ	pc	3.00					
	Junction Box, 4" x 4" G.I.	pc	2.00					
	Utility Box, 2" x 4" G.I.	pc	2.00					
	<b>Wires &amp; Fixtures</b>							
10.350	2-Gang Switch with Plate	pc	2.00					
	Duplex GFCI Outlet	set	2.00					
	3.5 sq. mm THW Wire	m	40.00					
	<b>Sub-total</b>							
<b>11.00</b>	<b>Plumbing Works</b>	<b>lot</b>	<b>1.00</b>					
	<b>Roughing-ins</b>							
11.060	PP-R Pipe 1/2"Ø	pc	7.00					
11.180	PP-R Elbow 90o x 1/2"Ø	pc	8.00					
11.181	PP-R Elbow 45o x 1/2"Ø	pc	4.00					
11.070	PP-R Coupling, 1/2"Ø	pc	8.00					
11.300	PP-R Plastic Union, 1/2"Ø	pc	2.00					
11.130	PP-R Tee, 1/2"Ø	pc	6.00					
11.320	PP-R Adaptor Female Threaded, 1/2"Ø	pc	4.00					
11.891	Flexible Hose, 1/2" Ø x 16"	pc	4.00					
12.020	Teflon Tape	roll	1.00					
	<b>Fixtures</b>							
11.971	Vessel Type Sink, ±14"Ø, Tempered Glass, Complete with Accessories	set	2.00					
12.010	S.S.Floor Drain 4" x 4"	pc	4.00					
12.031	Wall Mount SS Tissue Holder	pc	2.00					
12.041	SS Wall Mounted Soap Holder	pc	2.00					
12.050	S.S. Grab Rail 1-1/2"Ø	pc	2.00					
12.070	SS Faucet, Goose Neck, Lavatory	set	2.00					
12.071	SS Wall Mounted Ring Towel Holder	set	2.00					
11.893	SS Angle Valve 3/8" x 1/2"Ø, Single Outlet, Cross/Round Handle	pc	4.00					
	<b>Sub-total</b>							
<b>12.00</b>	<b>Sanitary Works</b>	<b>lot</b>	<b>1.00</b>					
	<b>Roughing-ins</b>							
12.270	uPVC Sanitary Pipe 2"Ø	pc	4.00					
12.373	uPVC Coupling x 2"Ø	pc	6.00					
12.310	uPVC Elbow 90o x 2"Ø	pc	6.00					
12.380	uPVC Tee 2" x 2"	pc	3.00					
12.340	uPVC Elbow 1/8 x 2"Ø	pc	6.00					
12.510	uPVC P-Trap 2"	pc	2.00					
12.550	PVC Cement	can	3.00					
	<b>Fixtures</b>							
11.930	Water Closet Flange	set	2.00					
11.940	Water Closet 1.6gpf with Accessories	set	2.00					
11.950	Waterless Urinal	set	1.00					
	<b>Sub-total</b>							
<b>13.00</b>	<b>Painting Works</b>	<b>sq.m</b>	<b>15.05</b>					
	<b>Metal Surface</b>	<b>sq.m</b>	<b>1.45</b>					
	Steel Casement Windows							
13.010	Surface Preparation	sq.m.	1.45					
13.071	Enamel, Quick Dry	li	1.00					
13.390	Assorted Paint Brush/Roller	pc	1.00					
	<b>Wood Surface</b>	<b>sq.m</b>	<b>13.60</b>					
	Doors and Jambs							
13.010	Surface Preparation	sq.m.	13.60					

I.D. NO	DESCRIPTION	UNIT	QTY	UNIT COST		TOTAL COST		GRAND TOTAL
				MATERIAL	LABOR	MATERIAL	LABOR	
13.050	Enamel, Flatwall	gal	0.50					
13.070	Enamel, Quick Dry	gal	0.50					
13.240	Sanding Sealer	gal	0.50					
13.390	Assorted Paint Brush/Roller	pc	2.00					
13.460	Assorted Sand Paper	pc	5.00					
	<b>Sub-total</b>							
<b>14.00</b>	<b>Tile Works</b>	<b>sq.m</b>	<b>74.98</b>					
1.070	Chipping Works	sq.m.	16.70	-		-		
1.071	Removal of Tiles	sq.m.	57.16	-		-		
	<b>Lavatory Counter</b>	<b>sq.m</b>	<b>1.12</b>					
14.020	Granite Slab, 19mm Thk	sq.m.	1.12					
14.210	Tile Adhesive 25 kg/bag	pc	1.00					
2.010	Portland Cement	bag	1.00					
	<b>Floor</b>	<b>sq.m</b>	<b>12.21</b>					
14.013	Granite Tiles 60cm x 120cm (Non-skid)	pc	19.00					
14.210	Tile Adhesive 25 kg/bag	pc	4.00					
14.200	Tile Grout 5 kg/bag	bag	1.00					
2.010	Portland Cement	bag	4.00					
5.030	Washed Sand	cu.m	0.70					
	<b>Walls</b>	<b>sq.m</b>	<b>61.65</b>					
14.012	Granite Tiles 60cm x 120cm (Polished)	pc	95.00					
14.210	Tile Adhesive 25 kg/bag	pc	14.00					
14.200	Tile Grout 5 kg/bag	bag	3.00					
2.010	Portland Cement	bag	14.00					
	<b>Sub-total</b>							
<b>2.00</b>	<b>Concreting Works</b>	<b>cu.m</b>	<b>0.12</b>					
2.010	Portland Cement	bag	1.50					
2.030	Washed Sand	cu.m	0.20					
2.040	Crushed Gravel 1"	cu.m	0.10					
	<b>Sub-total</b>							
<b>3.00</b>	<b>Rebar Works</b>	<b>kg</b>	<b>12.44</b>					
3.010	Deformed Round Bars, Grade 33	kg	12.44					
3.040	G.I. Tie Wire	kg	0.25					
	<b>Sub-total</b>							
<b>4.00</b>	<b>Formworks</b>	<b>lot</b>	<b>1.00</b>					
4.010	Rough Lumber	bd.ft	10.67					
4.050	Phenolic Board, 1/2"x4"x8'	pc	1.00					
4.040	CWN, Assorted	kg	1.00					
	<b>Sub-total</b>							
<b>6.00</b>	<b>Doors and Windows</b>	<b>lot</b>	<b>1.00</b>					
6.160	Panel Door 0.70m x 2.10m	pc	2.00					
6.200	Flush Door 0.70m x 2.10m	pc	2.00					
6.381	Hinges, Stainless 3-1/2" x 3-1/2", Heavy Duty , Five Knuckles	pa	8.00					
6.330	Entrance, Lockset, Lever Type	set	4.00					
	<b>Sub-total</b>							
<b>9.00</b>	<b>Carpentry Works</b>	<b>lot</b>	<b>1.00</b>					
	<b>Ceiling</b>	<b>sq.m</b>	<b>9.92</b>					
9.710	250x3028mm Woodgrained PVC Ceiling Panel	pc	16.00					
9.771	14.5x63x3028mm Cornice PVC,	pc	9.00					
9.780	Construction Adhesive, 300cc	pc	3.00					
9.640	Assorted Nails	kg	1.00					



LD. NO	DESCRIPTION	UNIT	QTY	UNIT COST		TOTAL COST		GRAND TOTAL
				MATERIAL	LABOR	MATERIAL	LABOR	
	<b>Lavatory Counter Cabinets</b>							
6.663	Half-screened Aluminum Framed Cupboards complete with Hardware and Accessories	sq.ft	17.22					
	<b>Sub-total</b>							
<b>10.00</b>	<b>Electrical Works</b>	<b>lot</b>	<b>1.00</b>					
	<b>Roughing-Ins</b>							
	Electrical Conduit PVC, 20mmØ	pc	3.00					
	Junction Box, 4" x 4" G.I.	pc	2.00					
	Utility Box, 2" x 4" G.I.	pc	2.00					
	<b>Wires &amp; Fixtures</b>							
10.350	2-Gang Switch with Plate	pc	2.00					
10.391	Duplex GFCI Outlet	pc	2.00					
	3.5 sq. mm THW Wire	m	40.00					
	<b>Sub-total</b>							
<b>11.00</b>	<b>Plumbing Works</b>	<b>lot</b>	<b>1.00</b>					
	<b>Roughing-ins</b>							
11.060	PP-R Pipe 1/2"Ø	pc	7.00					
11.180	PP-R Elbow 90o x 1/2"Ø	pc	8.00					
11.181	PP-R Elbow 45o x 1/2"Ø	pc	4.00					
11.070	PP-R Coupling, 1/2"Ø	pc	8.00					
11.300	PP-R Plastic Union, 1/2"Ø	pc	2.00					
11.130	PP-R Tee, 1/2"Ø	pc	6.00					
11.320	PP-R Adaptor Female Threaded, 1/2"Ø	pc	4.00					
11.891	Flexible Hose, 1/2" Ø x 16"	pc	4.00					
12.020	Teflon Tape	roll	1.00					
	<b>Fixtures</b>							
11.971	Vessel Type Sink, ±14"Ø, Tempered Glass, Complete with Accessories	set	2.00					
12.010	S.S.Floor Drain 4" x 4"	pc	4.00					
12.031	Wall Mount SS Tissue Holder	pc	2.00					
12.041	SS Wall Mounted Soap Holder	pc	2.00					
12.050	S.S. Grab Rail 1-1/2"Ø	pc	2.00					
12.070	SS Faucet, Goose Neck, Lavatory	set	2.00					
12.071	SS Wall Mounted Ring Towel Holder	set	2.00					
11.892	SS Angle Valve 3/8" x 1/2"Ø, Twin Outlet, Cross/Round Handle	pc	2.00					
11.893	SS Angle Valve 3/8" x 1/2"Ø, Single Outlet, Cross/Round Handle	pc	2.00					
11.990	Bidet Set with Stainless Steel Hose	set	2.00					
12.060	±500x800mm Frameless Mirror	pc	2.00					
	<b>Sub-total</b>							
<b>12.00</b>	<b>Sanitary Works</b>	<b>lot</b>	<b>1.00</b>					
	<b>Roughing-Ins</b>							
12.270	uPVC Sanitary Pipe 2"Ø	pc	4.00					
12.373	uPVC Coupling x 2"Ø	pc	6.00					
12.310	uPVC Elbow 90o x 2"Ø	pc	6.00					
12.380	uPVC Tee 2" x 2"	pc	3.00					
12.340	uPVC Elbow 1/8 x 2"Ø	pc	6.00					
12.510	uPVC P-Trap 2"	pc	2.00					
12.550	PVC Cement	can	3.00					
	<b>Fixtures</b>							
11.930	Water Closet Flange	set	2.00					
11.940	Water Closet 1.6gpf with Accessories	set	2.00					
11.950	Waterless Urinal	set	1.00					
	<b>Sub-total</b>							

I.D. NO	DESCRIPTION	UNIT	QTY	UNIT COST		TOTAL COST		GRAND TOTAL
				MATERIAL	LABOR	MATERIAL	LABOR	
<b>13.00</b>	<b>Painting Works</b>	<b>sq.m</b>	<b>16.61</b>					
	<b>Metal Surface</b>	sq.m	0.73					
	Steel Casement Windows							
13.010	Surface Preparation	sq.m.	0.73	-		-		
13.071	Enamel, Quick Dry	li	1.00					
13.390	Assorted Paint Brush/Roller	pc	1.00					
	<b>Wood Surface</b>	sq.m	15.88					
	Doors and Jambs							
13.010	Surface Preparation	sq.m.	15.88	-		-		
13.050	Enamel, Flatwall	gal	0.50					
13.070	Enamel, Quick Dry	gal	0.50					
13.240	Sanding Sealer	gal	0.50					
13.390	Assorted Paint Brush/Roller	pc	2.00					
13.460	Assorted Sand Paper	pc	5.00					
	<b>Sub-total</b>							
<b>14.00</b>	<b>Tile Works</b>	<b>sq.m</b>	<b>65.32</b>					
1.070	Chipping Works	sq.m.	14.22	-		-		
1.071	Removal of Tiles	sq.m.	49.50	-		-		
	<b>Lavatory Counter</b>	sq.m	1.60					
14.020	Granite Slab, 19mm Thk	sq.m.	1.60					
14.210	Tile Adhesive 25 kg/bag	pc	1.00					
2.010	Portland Cement	bag	1.00					
	<b>Floor</b>	sq.m	10.34					
14.013	Granite Tiles 60cm x 120cm (Non-skid)	pc	16.00					
14.210	Tile Adhesive 25 kg/bag	pc	3.00					
14.200	Tile Grout 5 kg/bag	bag	1.00					
2.010	Portland Cement	bag	3.00					
5.030	Washed Sand	cu.m	0.60					
	<b>Walls</b>	sq.m	53.38					
14.012	Granite Tiles 60cm x 120cm (Polished)	pc	82.00					
14.210	Tile Adhesive 25 kg/bag	pc	12.00					
14.200	Tile Grout 5 kg/bag	bag	3.00					
2.010	Portland Cement	bag	12.00					
	<b>Sub-total</b>							
<b>2.00</b>	<b>Concreting Works</b>	<b>cu.m</b>	<b>0.07</b>					
2.010	Portland Cement	bag	1.00					
2.030	Washed Sand	cu.m	0.10					
2.040	Crushed Gravel 1"	cu.m	0.10					
	<b>Sub-total</b>							
<b>3.00</b>	<b>Rebar Works</b>	<b>kg</b>	<b>7.33</b>					
3.010	Deformed Round Bars, Grade 33	kg	7.33					
3.040	G.I. Tie Wire	kg	0.25					
	<b>Sub-total</b>							
<b>4.00</b>	<b>Formworks</b>	<b>lot</b>	<b>1.00</b>					
4.010	Rough Lumber	bd.ft	8.00					
4.050	Phenolic Board, 1/2"x4"x8'	pc	1.00					
4.040	CWN, Assorted	kg	1.00					
	<b>Sub-total</b>							
<b>5.00</b>	<b>Masonry Works</b>	<b>sq.m.</b>	<b>0.44</b>					
5.020	Portland Cement	bag	1.00					
5.030	Washed Sand	cu.m	0.10					
5.040	CHB 4" thk	pc	6.00					
5.070	D10mm RSB	kg	0.81					
5.110	G.I. Tie Wire	kg	0.25					
	<b>Sub-total</b>							

I.D. NO	DESCRIPTION	UNIT	QTY	UNIT COST		TOTAL COST		GRAND TOTAL
				MATERIAL	LABOR	MATERIAL	LABOR	
<b>6.00</b>	<b>Doors and Windows</b>	<b>lot</b>	<b>1.00</b>					
6.160	Panel Door 0.70m x 2.10m	pc	1.00					
6.381	Hinges, Stainless 3-1/2" x 3-1/2", Heavy Duty, Five Knuckles	pa	2.00					
6.330	Entrance, Lockset, Lever Type	set	1.00					
	<b>Sub-total</b>							
<b>9.00</b>	<b>Carpentry Works</b>	<b>lot</b>	<b>1.00</b>					
	<b>Ceiling</b>	<b>sq.m</b>	<b>2.38</b>					
9.710	250x3028mm Woodgrained PVC Ceiling Panel	pc	4.00					
9.771	14.5x63x3028mm Cornice PVC,	pc	3.00					
9.780	Construction Adhesive, 300cc	pc	1.00					
9.840	Assorted Nails	kg	1.00					
	<b>Lavatory Counter Cabinets</b>							
6.663	Half-screened Aluminum Framed Cupboards complete with Hardware and Accessories	sq.ft	8.26					
	<b>Sub-total</b>							
<b>10.00</b>	<b>Electrical Works</b>	<b>lot</b>	<b>1.00</b>					
	<b>Roughing-ins</b>							
	Electrical Conduit PVC, 20mmØ	pc	3.00					
	Junction Box, 4" x 4" G.I.	pc	2.00					
	Utility Box, 2" x 4" G.I.	pc	2.00					
	<b>Wires &amp; Fixtures</b>							
10.350	2-Gang Switch with Plate	pc	1.00					
10.391	Duplex GFCI Outlet	pc	1.00					
	3.5 sq. mm THW Wire	m	40.00					
	<b>Sub-total</b>							
<b>11.00</b>	<b>Plumbing Works</b>	<b>lot</b>	<b>1.00</b>					
	<b>Roughing-ins</b>							
11.060	PP-R Pipe 1/2"Ø	pc	3.00					
11.180	PP-R Elbow 90o x 1/2"Ø	pc	4.00					
11.181	PP-R Elbow 45o x 1/2"Ø	pc	2.00					
11.070	PP-R Coupling, 1/2"Ø	pc	4.00					
11.130	PP-R Tee, 1/2"Ø	pc	2.00					
11.320	PP-R Adaptor Female Threaded, 1/2"Ø	pc	2.00					
11.891	Flexible Hose, 1/2" Ø x 16"	pc	2.00					
12.020	Teflon Tape	roll	3.00					
	<b>Fixtures</b>							
11.971	Vessel Type Sink, ±14"Ø. Tempered Glass, Complete with Accessories	set	1.00					
12.010	S.S.Floor Drain 4" x 4"	pc	1.00					
12.031	Wall Mount SS Tissue Holder	pc	1.00					
12.040	Soap Holder	pc	1.00					
12.050	S.S. Grab Rail 1-1/2"Ø	pc	1.00					
12.070	SS Faucet, Goose Neck, Lavatory	set	1.00					
12.071	SS Wall Mounted Ring Towel Holder	set	1.00					
11.893	SS Angle Valve 3/8" x 1/2"Ø, Single Outlet, Cross/Round Handle	pc	2.00					
	<b>Sub-total</b>							
<b>12.00</b>	<b>Sanitary Works</b>	<b>lot</b>	<b>1.00</b>					
	<b>Roughing-ins</b>							
12.270	uPVC Sanitary Pipe 2"Ø	pc	2.00					
12.373	uPVC Coupling x 2"Ø	pc	4.00					
12.310	uPVC Elbow 90o x 2"Ø	pc	4.00					
12.380	uPVC Tee 2" x 2"	pc	3.00					
12.340	uPVC Elbow 1/8 x 2"Ø	pc	2.00					

I.D. NO	DESCRIPTION	UNIT	QTY	UNIT COST		TOTAL COST		GRAND TOTAL
				MATERIAL	LABOR	MATERIAL	LABOR	
12.510	uPVC P-Trap 2"	pc	4.00					
12.550	PVC Cement	can	3.00					
	<b>Fixtures</b>							
11.930	Water Closet Flange	set	1.00					
11.940	Water Closet 1.6gpf with Accessories	set	1.00					
	<b>Sub-total</b>							
<b>13.00</b>	<b>Painting Works</b>	<b>sq.m</b>	<b>5.36</b>					
	<b>Metal Surface</b>	sq.m	0.36					
	Steel Casement Windows							
13.010	Surface Preparation	sq.m.	0.36	-		-		
13.071	Enamel, Quick Dry	li	1.00					
13.390	Assorted Paint Brush/Roller	pc	1.00					
	<b>Wood Surface</b>	sq.m	5.00					
	Doors and Jambs							
13.010	Surface Preparation	sq.m.	5.00	-		-		
13.050	Enamel, Flatwall	gal	0.25					
13.070	Enamel, Quick Dry	gal	0.25					
13.240	Sanding Sealer	gal	0.25					
13.390	Assorted Paint Brush/Roller	pc	2.00					
13.460	Assorted Sand Paper	pc	5.00					
	<b>Sub-total</b>							
<b>14.00</b>	<b>Tile Works</b>	<b>sq.m</b>	<b>16.11</b>					
1.070	Chipping Works	sq.m.	5.01	-		-		
1.071	Removal of Tiles	sq.m.	10.08	-		-		
	<b>Lavatory Counter</b>	<b>sq.m</b>	<b>1.02</b>					
14.020	Granite Slab, 19mm Thk	sq.m.	1.02					
14.210	Tile Adhesive 25 kg/bag	pc	1.00					
2.010	Portland Cement	bag	1.00					
	<b>Floor</b>	<b>sq.m</b>	<b>2.38</b>					
14.013	Granite Tiles 60cm x 120cm (Non-skid)	pc	4.00					
14.210	Tile Adhesive 25 kg/bag	pc	1.00					
14.200	Tile Grout 5 kg/bag	bag	1.00					
2.010	Portland Cement	bag	1.00					
5.030	Washed Sand	cu.m	0.20					
	<b>Walls</b>	<b>sq.m</b>	<b>12.71</b>					
14.012	Granite Tiles 60cm x 120cm (Polished)	pc	20.00					
14.210	Tile Adhesive 25 kg/bag	pc	3.00					
14.200	Tile Grout 5 kg/bag	bag	1.00					
2.010	Portland Cement	bag	3.00					
	<b>Sub-total</b>							
<b>2.00</b>	<b>Concreting Works</b>	<b>cu.m</b>	<b>0.09</b>					
2.010	Portland Cement	bag	1.00					
2.030	Washed Sand	cu.m	0.10					
2.040	Crushed Gravel 1"	cu.m	0.10					
	<b>Sub-total</b>							
<b>3.00</b>	<b>Rebar Works</b>	<b>kg</b>	<b>8.88</b>					
3.010	Deformed Round Bars, Grade 33	kg	8.88					
3.040	G.I. Tie Wire	kg	0.25					
	<b>Sub-total</b>							
<b>4.00</b>	<b>Formworks</b>	<b>lot</b>	<b>1.00</b>					
4.010	Rough Lumber	bd.ft	10.67					
4.050	Phenolic Board, 1/2"x4'x8'	pc	1.00					
4.040	CWN, Assorted	kg	1.00					
	<b>Sub-total</b>							

LD. NO	DESCRIPTION	UNIT	QTY	UNIT COST		TOTAL COST		GRAND TOTAL
				MATERIAL	LABOR	MATERIAL	LABOR	
<b>6.00</b>	<b>Doors and Windows</b>	<b>lot</b>	<b>1.00</b>					
6.160	Panel Door 0.70m x 2.10m	pc	2.00					
6.211	Flush Door 0.60m x ±1.50m	pc	2.00					
6.381	Hinges, Stainless 3-1/2" x 3-1/2", Heavy Duty , Five Knuckles	pa	8.00					
6.330	Entrance, Lockset, Lever Type	set	4.00					
	<b>Sub-total</b>							
<b>9.00</b>	<b>Carpentry Works</b>	<b>lot</b>	<b>1.00</b>					
	<b>Ceiling</b>	<b>sq.m</b>	<b>10.30</b>					
9.710	250x3028mm Woodgrained PVC Ceiling Panel	pc	17.00					
9.771	14.5x63x3028mm Cornice PVC,	pc	7.00					
9.780	Construction Adhesive, 300cc	pc	2.00					
9.640	Assorted Nails	kg	1.00					
	<b>Lavatory Counter Cabinets</b>							
6.663	Half-screened Aluminum Framed Cupboards complete with Hardware and Accessories	sq.ft	11.02					
	<b>Sub-total</b>							
<b>10.00</b>	<b>Electrical Works</b>	<b>lot</b>	<b>1.00</b>					
	<b>Roughing-ins</b>							
	Electrical Conduit PVC, 20mmØ	pc	3.00					
	Junction Box, 4" x 4" G.I.	pc	2.00					
	Utility Box, 2" x 4" G.I.	pc	2.00					
	<b>Wires &amp; Fixtures</b>							
10.350	2-Gang Switch with Plate	pc	2.00					
	Duplex GFCI Outlet	set	2.00					
	3.5 sq. mm THW Wire	m	40.00					
	<b>Sub-total</b>							
<b>11.00</b>	<b>Plumbing Works</b>	<b>lot</b>	<b>1.00</b>					
	<b>Roughing-ins</b>							
11.060	PP-R Pipe 1/2"Ø	pc	7.00					
11.180	PP-R Elbow 90o x 1/2"Ø	pc	8.00					
11.181	PP-R Elbow 45o x 1/2"Ø	pc	4.00					
11.070	PP-R Coupling, 1/2"Ø	pc	8.00					
11.300	PP-R Plastic Union, 1/2"Ø	pc	2.00					
11.130	PP-R Tee, 1/2"Ø	pc	6.00					
11.320	PP-R Adaptor Female Threaded, 1/2"Ø	pc	4.00					
11.891	Flexible Hose, 1/2" Ø x 16"	pc	4.00					
12.020	Teflon Tape	roll	1.00					
	<b>Fixtures</b>							
11.971	Vessel Type Sink, ±14"Ø, Tempered Glass, Complete with Accessories	set	2.00					
12.010	S.S.Floor Drain 4' x 4"	pc	4.00					
12.031	Wall Mount SS Tissue Holder	pc	2.00					
12.041	SS Wall Mounted Soap Holder	pc	2.00					
12.050	S.S. Grab Rail 1-1/2"Ø	pc	2.00					
12.070	SS Faucet, Goose Neck, Lavatory	set	2.00					
12.071	SS Wall Mounted Ring Towel Holder	set	2.00					
11.893	SS Angle Valve 3/8" x 1/2"Ø, Single Outlet, Cross/Round Handle	pc	4.00					
	<b>Sub-total</b>							
<b>12.00</b>	<b>Sanitary Works</b>	<b>lot</b>	<b>1.00</b>					
	<b>Roughing-ins</b>							
12.270	uPVC Sanitary Pipe 2"Ø	pc	4.00					
12.373	uPVC Coupling x 2"Ø	pc	6.00					
12.310	uPVC Elbow 90o x 2"Ø	pc	6.00					

LD. NO	DESCRIPTION	UNIT	QTY	UNIT COST		TOTAL COST		GRAND TOTAL
				MATERIAL	LABOR	MATERIAL	LABOR	
12.380	uPVC Tee 2" x 2"	pc	3.00					
12.340	uPVC Elbow 1/8 x 2"Ø	pc	6.00					
12.510	uPVC P-Trap 2"	pc	2.00					
12.550	PVC Cement	can	3.00					
	<b>Fixtures</b>							
11.930	Water Closet Flange	set	2.00					
11.940	Water Closet 1.6gpf with Accessories	set	2.00					
	<b>Sub-total</b>							
<b>13.00</b>	<b>Painting Works</b>	<b>sq.m</b>	<b>10.05</b>					
	<b>Metal Surface</b>	<b>sq.m</b>	<b>1.45</b>					
	Steel Casement Windows							
13.010	Surface Preparation	sq.m.	1.45	-		-		
13.071	Enamel, Quick Dry	li	1.00					
13.390	Assorted Paint Brush/Roller	pc	1.00					
	<b>Wood Surface</b>	<b>sq.m</b>	<b>8.60</b>					
	Doors and Jambs							
13.010	Surface Preparation	sq.m.	8.60	-		-		
13.050	Enamel, Flatwall	gal	0.50					
13.070	Enamel, Quick Dry	gal	0.50					
13.240	Sanding Sealer	gal	0.25					
13.390	Assorted Paint Brush/Roller	pc	2.00					
13.460	Assorted Sand Paper	pc	5.00					
	<b>Sub-total</b>							
<b>14.00</b>	<b>Tile Works</b>	<b>sq.m</b>	<b>67.68</b>					
1.070	Chipping Works	sq.m.	32.59	-		-		
1.071	Removal of Tiles	sq.m.	34.00	-		-		
	<b>Lavatory Counter</b>	<b>sq.m</b>	<b>1.09</b>					
14.020	Granite Slab, 19mm Thk	sq.m.	1.09					
14.210	Tile Adhesive 25 kg/bag	pc	1.00					
2.010	Portland Cement	bag	1.00					
	<b>Floor</b>	<b>sq.m</b>	<b>10.40</b>					
14.013	Granite Tiles 60cm x 120cm (Non-skid)	pc	16.00					
14.210	Tile Adhesive 25 kg/bag	pc	3.00					
14.200	Tile Grout 5 kg/bag	bag	1.00					
2.010	Portland Cement	bag	3.00					
5.030	Washed Sand	cu.m	0.60					
	<b>Walls</b>	<b>sq.m</b>	<b>56.20</b>					
14.012	Granite Tiles 60cm x 120cm (Polished)	pc	86.00					
14.210	Tile Adhesive 25 kg/bag	pc	12.00					
14.200	Tile Grout 5 kg/bag	bag	3.00					
2.010	Portland Cement	bag	12.00					
	<b>Sub-total</b>							
<b>2.00</b>	<b>Concreting Works</b>	<b>cu.m</b>	<b>0.08</b>					
2.010	Portland Cement	bag	1.00					
2.030	Washed Sand	cu.m	0.10					
2.040	Crushed Gravel 1"	cu.m	0.10					
	<b>Sub-total</b>							
<b>3.00</b>	<b>Rebar Works</b>	<b>kg</b>	<b>8.66</b>					
3.010	Deformed Round Bars, Grade 33	kg	8.66					
3.040	G.I. Tie Wire	kg	0.25					
	<b>Sub-total</b>							
<b>4.00</b>	<b>Formworks</b>	<b>lot</b>	<b>1.00</b>					
4.010	Rough Lumber	bd.ft	10.67					
4.050	Phenolic Board, 1/2"x4"x8'	pc	1.00					

LD. NO	DESCRIPTION	UNIT	QTY	UNIT COST		TOTAL COST		GRAND TOTAL
				MATERIAL	LABOR	MATERIAL	LABOR	
4.040	CWN, Assorted	kg	1.00					
	<b>Sub-total</b>							
<b>5.00</b>	<b>Masonry Works</b>	<b>sq.m.</b>	<b>0.35</b>					
5.020	Portland Cement	bag	1.00					
5.030	Washed Sand	cu.m	0.10					
5.040	CHB 4" thk	pc	5.00					
5.070	D10mm RSB	kg	0.65					
5.110	G.I. Tie Wire	kg	0.25					
	<b>Sub-total</b>							
<b>6.00</b>	<b>Doors and Windows</b>	<b>lot</b>	<b>1.00</b>					
6.160	Panel Door 0.70m x 2.10m	pc	1.00					
6.200	Flush Door 0.70m x 2.10m	pc	1.00					
6.381	Hinges, Stainless 3-1/2" x 3-1/2", Heavy Duty , Five Knuckles	pa	2.00					
6.330	Entrance, Lockset, Lever Type	set	2.00					
	<b>Sub-total</b>							
<b>9.00</b>	<b>Carpentry Works</b>	<b>lot</b>	<b>1.00</b>					
	<b>Ceiling</b>	<b>sq.m</b>	<b>5.24</b>					
9.710	250x3028mm Woodgrained PVC Ceiling Panel	pc	9.00					
9.771	14.5x63x3026mm Cornice PVC,	pc	5.00					
9.780	Construction Adhesive, 300cc	pc	1.00					
9.640	Assorted Nails	kg	1.00					
	<b>Lavatory Counter Cabinets</b>							
6.663	Half-screened Aluminum Framed Cupboards complete with Hardware and Accessories	sq.ft	13.43					
	<b>Sub-total</b>							
<b>10.00</b>	<b>Electrical Works</b>	<b>lot</b>	<b>1.00</b>					
	<b>Roughing-ins</b>							
	Electrical Conduit PVC, 20mmØ	pc	3.00					
	Junction Box, 4" x 4" G.I.	pc	2.00					
	Utility Box, 2' x 4" G.I.	pc	2.00					
	<b>Wires &amp; Fixtures</b>							
10.350	2-Gang Switch with Plate	pc	1.00					
	Duplex GFCI Outlet	set	2.00					
	3.5 sq. mm THW Wire	m	40.00					
	<b>Sub-total</b>							
<b>11.00</b>	<b>Plumbing Works</b>	<b>lot</b>	<b>1.00</b>					
	<b>Roughing-ins</b>							
11.060	PP-R Pipe 1/2"Ø	pc	3.00					
11.180	PP-R Elbow 90o x 1/2"Ø	pc	8.00					
11.181	PP-R Elbow 45o x 1/2"Ø	pc	4.00					
11.070	PP-R Coupling, 1/2"Ø	pc	6.00					
11.300	PP-R Plastic Union, 1/2"Ø	pc	2.00					
11.130	PP-R Tee, 1/2"Ø	pc	2.00					
11.320	PP-R Adaptor Female Threaded, 1/2"Ø	pc	2.00					
11.891	Flexible Hose, 1/2" Ø x 16"	pc	2.00					
12.020	Teflon Tape	roll	1.00					
	<b>Fixtures</b>							
11.971	Vessel Type Sink, ±14"Ø, Tempered Glass, Complete with Accessories	set	1.00					
12.010	S.S.Floor Drain 4' x 4"	pc	2.00					
12.031	Wall Mount SS Tissue Holder	pc	1.00					
12.041	SS Wall Mounted Soap Holder	pc	1.00					
12.050	S.S. Grab Rail 1-1/2"Ø	pc	1.00					
12.070	SS Faucet, Goose Neck, Lavatory	set	1.00					

I.D. NO	DESCRIPTION	UNIT	QTY	UNIT COST		TOTAL COST		GRAND TOTAL
				MATERIAL	LABOR	MATERIAL	LABOR	
12.071	SS Wall Mounted Ring Towel Holder	set	1.00					
11.893	SS Angle Valve 3/8" x 1/2"Ø, Single Outlet, Cross/Round Handle	pc	2.00					
12.060	±500x800mm Frameless Mirror	pc	2.00					
	<b>Sub-total</b>							
<b>12.00</b>	<b>Sanitary Works</b>	<b>lot</b>	<b>1.00</b>					
	<b>Roughing-Ins</b>							
12.270	uPVC Sanitary Pipe 2"Ø	pc	2.00					
12.373	uPVC Coupling x 2"Ø	pc	3.00					
12.310	uPVC Elbow 90o x 2"Ø	pc	3.00					
12.380	uPVC Tee 2" x 2"	pc	2.00					
12.340	uPVC Elbow 1/8 x 2"Ø	pc	4.00					
12.510	uPVC P-Trap 2"	pc	1.00					
12.550	PVC Cement	can	2.00					
	<b>Fixtures</b>							
11.930	Water Closet Flange	set	1.00					
11.940	Water Closet 1.6gpf with Accessories	set	1.00					
	<b>Sub-total</b>							
<b>13.00</b>	<b>Painting Works</b>	<b>sq.m</b>	<b>6.13</b>					
	<b>Metal Surface</b>	sq.m	0.36					
	Steel Casement Windows							
13.010	Surface Preparation	sq.m.	0.36	-		-		
13.071	Enamel, Quick Dry	li	1.00					
13.390	Assorted Paint Brush/Roller	pc	1.00					
	<b>Wood Surface</b>	sq.m	5.77					
	Doors and Jambs							
13.010	Surface Preparation	sq.m.	5.77	-		-		
13.050	Enamel, Flatwall	gal	0.25					
13.070	Enamel, Quick Dry	gal	0.25					
13.240	Sanding Sealer	gal	0.25					
13.390	Assorted Paint Brush/Roller	pc	2.00					
13.460	Assorted Sand Paper	pc	5.00					
	<b>Sub-total</b>							
<b>14.00</b>	<b>Tile Works</b>	<b>sq.m</b>	<b>34.99</b>					
1.070	Chipping Works	sq.m.	13.31	-		-		
1.071	Removal of Tiles	sq.m.	20.08	-		-		
	<b>Lavatory Counter</b>	sq.m	1.60					
14.020	Granite Slab, 19mm Thk	sq.m.	1.60					
14.210	Tile Adhesive 25 kg/bag	pc	1.00					
2.010	Portland Cement	bag	1.00					
	<b>Floor</b>	sq.m	5.24					
14.013	Granite Tiles 60cm x 120cm (Non-skid)	pc	9.00					
14.210	Tile Adhesive 25 kg/bag	pc	2.00					
14.200	Tile Grout 5 kg/bag	bag	1.00					
2.010	Portland Cement	bag	2.00					
5.030	Washed Sand	cu.m	0.30					
	<b>Walls</b>	sq.m	28.15					
14.012	Granite Tiles 60cm x 120cm (Polished)	pc	44.00					
14.210	Tile Adhesive 25 kg/bag	pc	6.00					
14.200	Tile Grout 5 kg/bag	bag	2.00					
2.010	Portland Cement	bag	6.00					
	<b>Sub-total</b>							
<b>2.00</b>	<b>Concreting Works</b>	<b>cu.m</b>	<b>0.10</b>					
2.010	Portland Cement	bag	1.00					
2.030	Washed Sand	cu.m	0.10					



LD. NO	DESCRIPTION	UNIT	QTY	UNIT COST		TOTAL COST		GRAND TOTAL
				MATERIAL	LABOR	MATERIAL	LABOR	
2.040	Crushed Gravel 1"	cu.m	0.10					
	<b>Sub-total</b>							
<b>3.00</b>	<b>Rebar Works</b>	<b>kg</b>	<b>10.55</b>					
3.010	Deformed Round Bars, Grade 33	kg	10.55					
3.040	G.I. Tie Wire	kg	0.25					
	<b>Sub-total</b>							
<b>4.00</b>	<b>Formworks</b>	<b>lot</b>	<b>1.00</b>					
4.010	Rough Lumber	bd.ft	10.67					
4.050	Phenolic Board, 1/2"x4"x8'	pc	1.00					
4.040	CWN, Assorted	kg	1.00					
	<b>Sub-total</b>							
<b>5.00</b>	<b>Masonry Works</b>	<b>sq.m.</b>	<b>0.83</b>					
5.020	Portland Cement	bag	1.00					
5.030	Washed Sand	cu.m	0.10					
5.040	CHB 4" thk	pc	11.00					
5.070	D10mm RSB	kg	1.54					
5.110	G.I. Tie Wire	kg	0.25					
	<b>Sub-total</b>							
<b>6.00</b>	<b>Doors and Windows</b>	<b>lot</b>	<b>1.00</b>					
6.160	Panel Door 0.70m x 2.10m	pc	1.00					
6.381	Hinges, Stainless 3-1/2" x 3-1/2", Heavy Duty , Five Knuckles	pa	1.00					
6.330	Entrance, Lockset, Lever Type	set	1.00					
	<b>Sub-total</b>							
<b>9.00</b>	<b>Carpentry Works</b>	<b>lot</b>	<b>1.00</b>					
	<b>Ceiling</b>	<b>sq.m</b>	<b>2.99</b>					
9.710	250x3028mm Woodgrained PVC Ceiling Panel	pc	5.00					
9.771	14.5x63x3028mm Cornice PVC,	pc	3.00					
9.780	Construction Adhesive, 300cc	pc	1.00					
9.640	Assorted Nails	kg	1.00					
	<b>Lavatory Counter Cabinets</b>							
6.663	Half-screened Aluminum Framed Cupboards complete with Hardware and Accessories	sq.ft	11.93					
	<b>Sub-total</b>							
<b>10.00</b>	<b>Electrical Works</b>	<b>lot</b>	<b>1.00</b>					
	<b>Roughing-ins</b>							
	Electrical Conduit PVC, 20mmØ	pc	2.00					
	Junction Box, 4" x 4" G.I.	pc	2.00					
	Utility Box, 2" x 4" G.I.	pc	2.00					
	<b>Wires &amp; Fixtures</b>							
10.350	2-Gang Switch with Plate	pc	1.00					
	Duplex GFCI Outlet	set	1.00					
	3.5 sq. mm THW Wire	m	40.00					
	<b>Sub-total</b>							
<b>11.00</b>	<b>Plumbing Works</b>	<b>lot</b>	<b>1.00</b>					
	<b>Roughing-ins</b>							
11.060	PP-R Pipe 1/2"Ø	pc	3.00					
11.180	PP-R Elbow 90o x 1/2"Ø	pc	8.00					
11.181	PP-R Elbow 45o x 1/2"Ø	pc	4.00					
11.070	PP-R Coupling, 1/2"Ø	pc	6.00					
11.300	PP-R Plastic Union, 1/2"Ø	pc	2.00					
11.130	PP-R Tee, 1/2"Ø	pc	2.00					
11.320	PP-R Adaptor Female Threaded, 1/2"Ø	pc	2.00					
11.891	Flexible Hose, 1/2" Ø x 16"	pc	3.00					
12.020	Teflon Tape	roll	1.00					

LD. NO	DESCRIPTION	UNIT	QTY	UNIT COST		TOTAL COST		GRAND TOTAL
				MATERIAL	LABOR	MATERIAL	LABOR	
	<b>Fixtures</b>							
11.971	Vessel Type Sink, ±14"Ø, Tempered Glass, Complete with Accessories	set	1.00					
12.091	S.S. Sink and P-Trap (Single)	set	1.00					
12.010	S.S. Floor Drain 4" x 4"	pc	1.00					
12.031	Wall Mount SS Tissue Holder	pc	1.00					
12.041	SS Wall Mounted Soap Holder	pc	1.00					
12.050	S.S. Grab Rail 1-1/2"Ø	pc	1.00					
12.070	SS Faucet, Goose Neck, Lavatory	set	2.00					
12.071	SS Wall Mounted Ring Towel Holder	set	1.00					
11.892	SS Angle Valve 3/8" x 1/2"Ø, Twin Outlet, Cross/Round Handle	pc	1.00					
11.893	SS Angle Valve 3/8" x 1/2"Ø, Single Outlet, Cross/Round Handle	pc	1.00					
11.990	Bidet Set with Stainless Steel Hose	set	1.00					
11.951	Wall Mount Urinal Complete with Accessories	set	1.00					
12.060	±500x800mm Frameless Mirror	pc	2.00					
	<b>Sub-total</b>							
<b>12.00</b>	<b>Sanitary Works</b>	<b>lot</b>	<b>1.00</b>					
	<b>Roughing-ins</b>							
12.270	uPVC Sanitary Pipe 2"Ø	pc	2.00					
12.373	uPVC Coupling x 2"Ø	pc	3.00					
12.310	uPVC Elbow 90o x 2"Ø	pc	3.00					
12.380	uPVC Tee 2" x 2"	pc	2.00					
12.340	uPVC Elbow 1/8 x 2"Ø	pc	4.00					
12.510	uPVC P-Trap 2"	pc	1.00					
12.550	PVC Cement	can	2.00					
	<b>Fixtures</b>							
11.930	Water Closet Flange	set	1.00					
11.940	Water Closet 1.6gpf with Accessories	set	1.00					
	<b>Sub-total</b>							
<b>13.00</b>	<b>Painting Works</b>	<b>sq.m</b>	<b>4.33</b>					
	<b>Metal Surface</b>	<b>sq.m</b>	<b>0.36</b>					
	Steel Casement Windows							
13.010	Surface Preparation	sq.m.	0.36	-		-		
13.071	Enamel, Quick Dry	li	1.00					
13.390	Assorted Paint Brush/Roller	pc	1.00					
	<b>Wood Surface</b>	<b>sq.m</b>	<b>3.97</b>					
	Doors and Jamb							
13.010	Surface Preparation	sq.m.	3.97	-		-		
13.050	Enamel, Flatwall	gal	0.25					
13.070	Enamel, Quick Dry	gal	0.25					
13.240	Sanding Sealer	gal	0.25					
13.390	Assorted Paint Brush/Roller	pc	2.00					
13.460	Assorted Sand Paper	pc	5.00					
	<b>Sub-total</b>							
<b>14.00</b>	<b>Tile Works</b>	<b>sq.m</b>	<b>21.63</b>					
1.070	Chipping Works	sq.m.	9.26	-		-		
1.071	Removal of Tiles	sq.m.	10.16	-		-		
	<b>Lavatory Counter</b>	<b>sq.m</b>	<b>2.22</b>					
14.020	Granite Slab, 19mm Thk	sq.m.	2.22					
14.210	Tile Adhesive 25 kg/bag	pc	2.00					
2.010	Portland Cement	bag	2.00					
	<b>Floor</b>	<b>sq.m</b>	<b>2.99</b>					
14.013	Granite Tiles 60cm x 120cm (Non-skid)	pc	5.00					
14.210	Tile Adhesive 25 kg/bag	pc	1.00					

I.D. NO	DESCRIPTION	UNIT	QTY	UNIT COST		TOTAL COST		GRAND TOTAL
				MATERIAL	LABOR	MATERIAL	LABOR	
14.200	Tile Grout 5 kg/bag	bag	1.00					
2.010	Portland Cement	bag	1.00					
5.030	Washed Sand	cu.m	0.20					
	<b>Walls</b>	<b>sq.m</b>	<b>16.43</b>					
14.012	Granite Tiles 60cm x 120cm (Polished)	pc	26.00					
14.210	Tile Adhesive 25 kg/bag	pc	4.00					
14.200	Tile Grout 5 kg/bag	bag	1.00					
2.010	Portland Cement	bag	4.00					
	<b>Sub-total</b>							
<b>11.00</b>	<b>Plumbing Works</b>	<b>lot</b>	<b>1.00</b>					
	Dry Stand Pipe							
12.141	Fire Hose Cabinet complete with all contents per specifications (with fire extinguisher)	set	1.00					
	<b>Sub-total</b>							
<b>13.00</b>	<b>Painting Works</b>	<b>sq.m</b>	<b>146.88</b>					
	<b>Painting Works</b>	<b>sq.m.</b>	<b>146.88</b>					
	<b>Concrete Surfaces</b>	<b>sq.m.</b>	<b>139.74</b>					
	Parapet Coping Surface	sq.m	9.80					
13.010	Surface Preparation	sq.m.	139.74	-		-		
13.501	Chlorinated Rubber Paint	gal	7.00					
13.390	Assorted Paint Brush/Roller	pc	1.00					
	Terrace Rim/Moulding	sq.m.	129.94					
13.010	Surface Preparation	sq.m.	129.94	-		-		
13.190	Neutralizer	gal	5.00					
13.020	Latex, Flat	gal	5.00					
13.030	Latex, Semi Gloss	gal	7.00					
13.230	Tinting Color	qrt	5.00					
13.390	Assorted Paint Brush/Roller	pc	5.00					
	<b>Matal Surfaces (Steel Hand Rails)</b>	<b>sq.m.</b>	<b>7.14</b>					
13.010	Surface Preparation	sq.m.	7.14	-		-		
13.070	Enamel, Quick Dry	gal	1.00					
13.390	Assorted Paint Brush/Roller	pc	1.00					
	<b>Sub-total</b>							
	<b>GENERAL REQUIREMENTS</b>							-
<b>I.</b>	<b>DIRECT COST</b>							-
<b>II.</b>	<b>INDIRECT COST</b>							-
	OVERHEAD EXPENSES ( _% )							-
	CONTINGENCIES ( _% )							-
	MISCELLANEOUS ( _% )							-
	CONTRACTORS PROFIT ( _% )							-
<b>III.</b>	<b>TAX</b>							-
<b>IV.</b>	<b>TOTAL CONSTRUCTION COST</b>							-

Prepared by:

\_\_\_\_\_  
Contractor/Representative

***LOT 2 – REPAIR/ REHABILITATION OF  
BUILDING NO. 2 (SNC BUILDING)***

( INSERT LETTER HEAD HERE )

## PROGRAM OF WORKS BILL OF QUANTITY

OFFICE: <b>DepED - CAR REGIONAL OFFICE</b>			DATE: March 2021			
REGION: CAR			BUDGET ALLOCATION:			
DIVISION:			ESTIMATED GOVERNMENT EXPENSES:			
PROJECT DESCRIPTION: <b>REPAIR/REHABILITATION OF BUILDING NO. 2</b>			APPROVED BUDGET FOR THE PROJECT:			
PLAN NO.:			COMPLETION PERIOD: 30 CD			
LOCATION: DepED- CAR Regional Office COMPOUND, WANGAL, LA TRINIDAD, BENGUET			REQUIRED MANPOWER: Project Engineer, Foreman, Tile Setter Skilled Worker and Laborers			
			REQUIRED EQUIPMENTS: Assorted Power and Hand Tools			
ITEM NO.	WORK DESCRIPTION	% OF TOTAL	UNIT	QUANTITY	TOTAL COST	REMARKS
A	General Requirements		lot	1.00		
2.00	Concreting Works		cu.m	0.10		
3.00	Rebar Works		kg	10.33		
4.00	Formworks		lot	1.00		
5.00	Masonry Works		sq.m	1.69		
6.00	Doors and Windows		lot	1.00		
9.00	Carpentry Works		lot	1.00		
10.00	Electrical Works		lot	1.00		
11.00	Plumbing Works		lot	1.00		
12.00	Sanitary Works		lot	1.00		
13.00	Painting Works		sq.m	16.43		
14.00	Tile Works		sq.m	57.24		
2.00	Concreting Works		cu.m	0.05		
3.00	Rebar Works		kg	5.11		
4.00	Formworks		lot	1.00		
5.00	Masonry Works		sq.m	0.96		
6.00	Doors and Windows		lot	1.00		
9.00	Carpentry Works		lot	1.00		
10.00	Electrical Works		lot	1.00		
11.00	Plumbing Works		lot	1.00		
12.00	Sanitary Works		lot	1.00		
13.00	Painting Works		sq.m	8.67		
14.00	Tile Works		sq.m	24.84		
I.	DIRECT COST					
II.	INDIRECT COST ( _% of I)					
III.	WITH HOLDING TAX AND VAT ( 5% OF I + II )					
IV.	TOTAL CONSTRUCTION COST				PHP	-

Prepared by:

Contractor / Representative

( INSERT LETTER HEAD HERE )

Project: REPAIR/REHABILITATION OF BUILDING NO. 2  
 Location: DepEd CAR Compound, Wangal, La Trinidad, Benguet

## DETAILED ESTIMATE

I.D. NO	DESCRIPTION	UNIT	QTY	UNIT COST		TOTAL COST		GRAND TOTAL
				MATERIAL	LABOR	MATERIAL	LABOR	
<b>A</b>	<b>General Requirements</b>	lot	1.00					
	Mobilization/Temporary Structures, Utilities and Services/Demobilization	lot	1.00					
	Safety and Health	lot	1.00					
	Project Billboard	lot	1.00					
	<b>Sub-total</b>							
<b>2.00</b>	<b>Concreting Works</b>	cu.m	0.10					
2.010	Portland Cement	bag	1.00					
2.030	Washed Sand	cu.m	0.20					
2.040	Crushed Gravel 1"	cu.m	0.10					
	<b>Sub-total</b>							
<b>3.00</b>	<b>Rebar Works</b>	kg	10.33					
3.010	Deformed Round Bars, Grade 33	kg	10.33					
3.040	G.I. Tie Wire	kg	0.25					
	<b>Sub-total</b>							
<b>4.00</b>	<b>Formworks</b>	lot	1.00					
4.010	Rough Lumber	bd.ft	10.67					
4.050	Phenolic Board, 1/2"x4"x8'	pc	1.00					
4.040	CWN, Assorted	kg	1.00					
	<b>Sub-total</b>							
<b>5.00</b>	<b>Masonry Works</b>	sq.m	1.69					
5.020	Portland Cement	bag	2.00					
5.030	Washed Sand	cu.m	0.25					
5.060	CHB 6" thk	pc	22.00					
	<b>Sub-total</b>							
<b>6.00</b>	<b>Doors and Windows</b>	lot	1.00					
6.021	Removal of Window	sq.m	2.00					
6.160	Panel Door 0.70m x 2.10m	pc	2.00					
6.211	Flush Door 0.60m x ±1.50m	pc	3.00					
6.381	Hinges, Stainless 3-1/2" x 3-1/2", Heavy Duty , Five Knuckles	pa	10.00					
6.391	4" SS Heavy Duty Barrel Bolt	set	3.00					
6.330	Entrance, Lockset, Lever Type	set	2.00					
	<b>Sub-total</b>							
<b>9.00</b>	<b>Carpentry Works</b>	lot	1.00					
	<b>Ceiling</b>	sq.m	8.16					
9.710	250x3028mm Woodgrained PVC Ceiling Panel	pc	14.00					
9.771	14.5x83x3028mm Cornice PVC,	pc	6.00					
9.780	Construction Adhesive, 300cc	pc	1.00					
9.640	Assorted Nails	kg	1.00					

I.D. NO	DESCRIPTION	UNIT	QTY	UNIT COST		TOTAL COST		GRAND TOTAL
				MATERIAL	LABOR	MATERIAL	LABOR	
	<b>Lavatory Counter Cabinets</b>							
6.663	Half-screened Aluminum Framed Cupboards complete with Hardware and Accessories	sq.ft	12.05					
	<b>Sub-total</b>							
<b>10.00</b>	<b>Electrical Works</b>	<b>lot</b>	<b>1.00</b>					
	<b>Roughing-ins</b>							
	Electrical Conduit PVC, 20mmØ	pc	3.00					
	Junction Box, 4" x 4" G.I.	pc	2.00					
	Utility Box, 2" x 4" G.I.	pc	2.00					
	<b>Wires &amp; Fixtures</b>							
10.350	2-Gang Switch with Plate	pc	2.00					
	Duplex GFCI Outlet	set	2.00					
10.721	Exhaust Fan	pc	2.00					
	3.5 sq. mm THW Wire	m	40.00					
	<b>Sub-total</b>							
<b>11.00</b>	<b>Plumbing Works</b>	<b>lot</b>	<b>1.00</b>					
	<b>Roughing-ins</b>							
11.060	PP-R Pipe 1/2"Ø	pc	7.00					
11.180	PP-R Elbow 90o x 1/2"Ø	pc	8.00					
11.181	PP-R Elbow 45o x 1/2"Ø	pc	4.00					
11.070	PP-R Coupling, 1/2"Ø	pc	8.00					
11.300	PP-R Plastic Union, 1/2"Ø	pc	2.00					
11.130	PP-R Tee, 1/2"Ø	pc	6.00					
11.320	PP-R Adaptor Female Threaded, 1/2"Ø	pc	4.00					
11.891	Flexible Hose, 1/2" Ø x 16"	pc	4.00					
12.020	Teflon Tape	roll	1.00					
	<b>Fixtures</b>							
11.971	Vessel Type Sink, ±14"Ø, Tempered Glass, Complete with Accessories	set	2.00					
12.010	S.S. Floor Drain 4" x 4"	pc	4.00					
12.031	Wall Mount SS Tissue Holder	pc	2.00					
12.041	SS Wall Mounted Soap Holder	pc	2.00					
12.050	S.S. Grab Rail 1-1/2"Ø	pc	2.00					
12.070	SS Faucet, Goose Neck, Lavatory	set	2.00					
12.071	SS Wall Mounted Ring Towel Holder	set	2.00					
11.893	SS Angle Valve 3/8" x 1/2"Ø, Single Outlet, Cross/Round Handle	pc	4.00					
12.060	±500x800mm Frameless Mirror	pc	2.00					
	<b>Sub-total</b>							
<b>12.00</b>	<b>Sanitary Works</b>	<b>lot</b>	<b>1.00</b>					
	<b>Roughing-ins</b>							
12.270	uPVC Sanitary Pipe 2"Ø	pc	4.00					
12.373	uPVC Coupling x 2"Ø	pc	6.00					
12.310	uPVC Elbow 90o x 2"Ø	pc	6.00					
12.380	uPVC Tee 2" x 2"	pc	3.00					
12.340	uPVC Elbow 1/8 x 2"Ø	pc	6.00					
12.510	uPVC P-Trap 2"	pc	2.00					
12.550	PVC Cement	can	3.00					
	<b>Fixtures</b>							
11.930	Water Closet Flange	set	2.00					
11.950	Waterless Urinal	set	1.00					
11.940	Water Closet 1.6gpf with Accessories	set	2.00					
	<b>Sub-total</b>							
<b>13.00</b>	<b>Painting Works</b>	<b>sq.m</b>	<b>16.43</b>					
	<b>Wood Surface</b>	<b>sq.m</b>	<b>16.43</b>					
	Doors and Jamb							

I.D. NO	DESCRIPTION	UNIT	QTY	UNIT COST		TOTAL COST		GRAND TOTAL
				MATERIAL	LABOR	MATERIAL	LABOR	
13.010	Surface Preparation	sq.m.	16.43	-		-		
13.050	Enamel, Flatwall	gal	0.75					
13.070	Enamel, Quick Dry	gal	0.75					
13.240	Sanding Sealer	gal	0.50					
13.390	Assorted Paint Brush/Roller	pc	2.00					
13.460	Assorted Sand Paper	pc	5.00					
	<b>Sub-total</b>							
<b>14.00</b>	<b>Tile Works</b>	<b>sq.m</b>	<b>57.24</b>					
1.070	Chipping Works	sq.m.	17.21	-		-		
1.071	Removal of Tiles	sq.m.	39.05	-		-		
	<b>Lavatory Counter</b>	<b>sq.m</b>	<b>0.98</b>					
14.020	Granite Slab, 19mm Thk	sq.m.	0.98					
14.210	Tile Adhesive 25 kg/bag	pc	1.00					
2.010	Portland Cement	bag	1.00					
	<b>Floor</b>	<b>sq.m</b>	<b>8.06</b>					
14.013	Granite Tiles 60cm x 120cm (Non-skid)	pc	13.00					
14.210	Tile Adhesive 25 kg/bag	pc	3.00					
14.200	Tile Grout 5 kg/bag	bag	1.00					
2.010	Portland Cement	bag	3.00					
5.030	Washed Sand	cu.m	0.50					
	<b>Walls</b>	<b>sq.m</b>	<b>48.20</b>					
14.012	Granite Tiles 60cm x 120cm (Polished)	pc	74.00					
14.210	Tile Adhesive 25 kg/bag	pc	11.00					
14.200	Tile Grout 5 kg/bag	bag	2.00					
2.010	Portland Cement	bag	11.00					
	<b>Sub-total</b>							
<b>2.00</b>	<b>Concreting Works</b>	<b>cu.m</b>	<b>0.05</b>					
2.010	Portland Cement	bag	0.50					
2.030	Washed Sand	cu.m	0.10					
2.040	Crushed Gravel 1"	cu.m	0.10					
	<b>Sub-total</b>							
<b>3.00</b>	<b>Rebar Works</b>	<b>kg</b>	<b>5.11</b>					
3.010	Deformed Round Bars, Grade 33	kg	5.11					
3.040	G.I. Tie Wire	kg	0.25					
	<b>Sub-total</b>							
<b>4.00</b>	<b>Formworks</b>	<b>lot</b>	<b>1.00</b>					
4.010	Rough Lumber	bd.ft	10.67					
4.050	Phenolic Board, 1/2"x4'x8'	pc	1.00					
4.040	CWN, Assorted	kg	1.00					
	<b>Sub-total</b>							
<b>5.00</b>	<b>Masonry Works</b>	<b>sq.m</b>	<b>0.96</b>					
5.020	Portland Cement	bag	1.00					
5.030	Washed Sand	cu.m	0.10					
5.040	CHB 4" thk	pc	13.00					
	<b>Sub-total</b>							
<b>6.00</b>	<b>Doors and Windows</b>	<b>lot</b>	<b>1.00</b>					
6.160	Panel Door 0.70m x 2.10m	pc	2.00					
6.381	Hinges, Stainless 3-1/2" x 3-1/2", Heavy Duty , Five Knuckles	pa	4.00					
6.330	Entrance, Lockset, Lever Type	set	2.00					
	<b>Sub-total</b>							
<b>9.00</b>	<b>Carpentry Works</b>	<b>lot</b>	<b>1.00</b>					
	<b>Ceiling</b>	<b>sq.m</b>	<b>2.92</b>					
9.710	250x3028mm Woodgrained PVC Ceiling Panel	pc	5.00					



I.D. NO	DESCRIPTION	UNIT	QTY	UNIT COST		TOTAL COST		GRAND TOTAL
				MATERIAL	LABOR	MATERIAL	LABOR	
9.771	14.5x63x3028mm Cornice PVC,	pc	4.00					
9.780	Construction Adhesive, 300cc	pc	1.00					
9.640	Assorted Nails	kg	1.00					
	<b>Lavatory Counter Cabinets</b>							
6.663	Half-screened Aluminum Framed Cupboards complete with Hardware and Accessories	sq.ft	3.79					
	<b>Sub-total</b>							
<b>10.00</b>	<b>Electrical Works</b>	<b>lot</b>	<b>1.00</b>					
	<b>Roughing-ins</b>							
	Electrical Conduit PVC, 20mmØ	pc	3.00					
	Junction Box, 4" x 4" G.I.	pc	2.00					
	Utility Box, 2" x 4" G.I.	pc	2.00					
	<b>Wires &amp; Fixtures</b>							
10.340	Single Switch with Plate	pc	2.00					
	Duplex GFCI Outlet	set	2.00					
	3.5 sq. mm THW Wire	m	40.00					
	<b>Sub-total</b>							
<b>11.00</b>	<b>Plumbing Works</b>	<b>lot</b>	<b>1.00</b>					
	<b>Roughing-ins</b>							
11.060	PP-R Pipe 1/2"Ø	pc	7.00					
11.180	PP-R Elbow 90o x 1/2"Ø	pc	8.00					
11.181	PP-R Elbow 45o x 1/2"Ø	pc	4.00					
11.070	PP-R Coupling, 1/2"Ø	pc	8.00					
11.300	PP-R Plastic Union, 1/2"Ø	pc	2.00					
11.130	PP-R Tee, 1/2"Ø	pc	6.00					
11.320	PP-R Adaptor Female Threaded, 1/2"Ø	pc	4.00					
11.891	Flexible Hose, 1/2" Ø x 16"	pc	4.00					
12.020	Teflon Tape	roll	1.00					
	<b>Fixtures</b>							
11.971	Vessel Type Sink, ±14"Ø, Tempered Glass, Complete with Accessories	set	2.00					
12.010	S.S.Floor Drain 4" x 4"	pc	2.00					
12.031	Wall Mount SS Tissue Holder	pc	2.00					
12.041	SS Wall Mounted Soap Holder	pc	2.00					
12.050	S.S. Grab Rail 1-1/2"Ø	pc	2.00					
12.070	SS Faucet, Goose Neck, Lavatory	set	2.00					
12.071	SS Wall Mounted Ring Towel Holder	set	2.00					
11.893	SS Angle Valve 3/8" x 1/2"Ø, Single Outlet, Cross/Round Handle	pc	4.00					
12.060	±500x800mm Frameless Mirror	pc	2.00					
	<b>Sub-total</b>							
<b>12.00</b>	<b>Sanitary Works</b>	<b>lot</b>	<b>1.00</b>					
	<b>Roughing-ins</b>							
12.270	uPVC Sanitary Pipe 2"Ø	pc	2.00					
12.373	uPVC Coupling x 2"Ø	pc	4.00					
12.310	uPVC Elbow 90o x 2"Ø	pc	4.00					
12.380	uPVC Tee 2" x 2"	pc	2.00					
12.340	uPVC Elbow 1/8 x 2"Ø	pc	4.00					
12.510	uPVC P-Trap 2"	pc	2.00					
12.550	PVC Cement	can	1.00					
	<b>Fixtures</b>							
11.930	Water Closet Flange	set	2.00					
11.940	Water Closet 1.6gpf with Accessories	set	2.00					
	<b>Sub-total</b>							

LD. NO	DESCRIPTION	UNIT	QTY	UNIT COST		TOTAL COST		GRAND TOTAL
				MATERIAL	LABOR	MATERIAL	LABOR	
<b>13.00</b>	<b>Painting Works</b>	<b>sq.m</b>	<b>8.67</b>					
	<b>Metal Surface</b>	sq.m	0.73					
	Steel Casement Windows							
13.010	Surface Preparation	sq.m.	0.73	-		-		
13.071	Enamel, Quick Dry	li	1.00					
13.390	Assorted Paint Brush/Roller	pc	1.00					
	<b>Wood Surface</b>	sq.m	7.94					
	Doors and Jambs							
13.010	Surface Preparation	sq.m.	7.94	-		-		
13.050	Enamel, Flatwall	gal	0.25					
13.070	Enamel, Quick Dry	gal	0.25					
13.240	Sanding Sealer	gal	0.50					
13.390	Assorted Paint Brush/Roller	pc	2.00					
13.460	Assorted Sand Paper	pc	5.00					
	<b>Sub-total</b>							
<b>14.00</b>	<b>Tile Works</b>	<b>sq.m</b>	<b>24.84</b>					
1.070	Chipping Works	sq.m.	15.83	-		-		
1.071	Removal of Tiles	sq.m.	8.03	-		-		
	<b>Lavatory Counter</b>	<b>sq.m</b>	<b>0.98</b>					
14.020	Granite Slab, 19mm Thk	sq.m.	0.98					
14.210	Tile Adhesive 25 kg/bag	pc	1.00					
2.010	Portland Cement	bag	1.00					
	<b>Floor</b>	<b>sq.m</b>	<b>2.92</b>					
14.013	Granite Tiles 60cm x 120cm (Non-skid)	pc	5.00					
14.210	Tile Adhesive 25 kg/bag	pc	1.00					
14.200	Tile Grout 5 kg/bag	bag	1.00					
2.010	Portland Cement	bag	1.00					
5.030	Washed Sand	cu.m	0.20					
	<b>Walls</b>	<b>sq.m</b>	<b>20.94</b>					
14.012	Granite Tiles 60cm x 120cm (Polished)	pc	32.00					
14.210	Tile Adhesive 25 kg/bag	pc	5.00					
14.200	Tile Grout 5 kg/bag	bag	1.00					
2.010	Portland Cement	bag	5.00					
	<b>Sub-total</b>							
	<b>GENERAL REQUIREMENTS</b>							
<b>I.</b>	<b>DIRECT COST</b>							
<b>II.</b>	<b>INDIRECT COST</b>							
	OVERHEAD EXPENSES ( _% )							
	CONTINGENCIES ( _% )							
	MISCELLANEOUS ( _% )							
	CONTRACTORS PROFIT ( _% )							
<b>III.</b>	<b>TAX</b>							
<b>IV.</b>	<b>TOTAL CONSTRUCTION COST</b>							

Prepared by:

\_\_\_\_\_  
Contractor / Representative

***LOT 3 – REPAIR/ REHABILITATION OF  
BUILDING NO. 3***

422-8590 422-5500 422-9590 422-5187 422-7434  
 HRDD NEAP-R PPRD QUAD COA  
 422-7096 422-0615 423-2218 422-5155 424-5187  
 CLMD LRMS ESSD Finance Division FTAD  
 422-1804 423-2215 424-3883 423-2213 422-2198 422-1804  
 Administrative Division Cash Section Payroll Section Records Section Supply Section General Services Unit  
 422-1318 422-4074 422-9590 422-1318 422-1318 423-2214  
 Office of the Regional Director Office of the ARD ICT Unit Public Affairs Unit Legal Unit  
 Contact Numbers (Area Code: 074):

## PROGRAM OF WORKS BILL OF QUANTITY

OFFICE: <b>DepED - CAR REGIONAL OFFICE</b>			DATE: <b>March 2021</b>			
REGION: <b>CAR</b>			BUDGET ALLOCATION:			
DIVISION:			ESTIMATED GOVERNMENT EXPENSES:			
PROJECT DESCRIPTION: <b>REPAIR/REHABILITATION OF BUILDING NO. 3</b>			APPROVED BUDGET FOR THE PROJECT:			
PLAN NO.:			COMPLETION PERIOD: <b>30 CD</b>			
LOCATION: <b>DepED- CAR Regional Office COMPOUND, WANGAL, LA TRINIDAD, BENGUET</b>			REQUIRED MANPOWER: <b>Project Engineer, Foreman, Tile Setter Skilled Worker and Laborers</b>			
			REQUIRED EQUIPMENTS: <b>Assorted Power and Hand Tools</b>			
ITEM NO.	WORK DESCRIPTION	% OF TOTAL	UNIT	QUANTITY	TOTAL COST	REMARKS
A	General Requirements		lot	1.00		
1.00	Earthworks		lot	1.00		
2.00	Concreting Works		cu.m.	0.57		
3.00	Rebar Works		kg	18.89		
4.00	Formworks		lot	1.00		
5.00	Masonry Works		sq.m.	13.44		
6.00	Doors and Windows		lot	1.00		
7.00	Steel Works		lot	1.00		
8.00	Roofing Works		sq.m.	3.02		
9.00	Carpentry Works		lot	1.00		
10.00	Electrical Works		lot	1.00		
11.00	Plumbing Works		lot	1.00		
12.00	Sanitary Works		lot	1.00		
13.00	Painting Works		sq.m.	27.04		
14.00	Tile Works		sq.m.	34.61		
I.	<b>DIRECT COST</b>					
II.	<b>INDIRECT COST ( % of I)</b>					
III.	<b>WITH HOLDING TAX AND VAT ( 5% OF I + II )</b>					
<b>IV.</b>	<b>TOTAL CONSTRUCTION COST</b>				<b>PHP</b>	

Prepared by:

Contractor / Representative



Republic of the Philippines  
 DEPARTMENT OF EDUCATION  
 CORDILLERA ADMINISTRATIVE REGION  
 Mangal La Trinidad, Benguet, 2601  
 Website: [www.depedsar.php](http://www.depedsar.php) | Email: [car@deped.gov.ph](mailto:car@deped.gov.ph)



( INSERT LETTER HEAD HERE )

Project: REPAIR/REHABILITATION OF BUILDING NO. 3  
 Location: DepEd CAR Compound, Wangal, La Trinidad, Benguet

### DETAILED ESTIMATE

I.D. NO	DESCRIPTION	UNIT	QTY	UNIT COST		TOTAL COST		GRAND TOTAL
				MATERIAL	LABOR	MATERIAL	LABOR	
<b>A</b>	<b>General Requirements</b>	lot	<b>1.00</b>					
	Mobilization/Temporary Structures, Utilities and Services/Demobilization	lot	1.00					
	Safety and Health	lot	1.00					
	Project Billboard	lot	1.00					
	<b>Sub-total</b>							
<b>1.00</b>	<b>Earthworks</b>	lot	<b>1.00</b>					
1.010	Clearing and Grubbing	sq.m	3.84	-		-		
1.020	Structural Excavation	cu.m	0.59	-		-		
1.040	Gravel Bedding G-1	cu.m	0.25					
	<b>Sub-total</b>							
<b>2.00</b>	<b>Concreting Works</b>	cu.m.	<b>0.57</b>					
	<b>Wall Footing, Slab on Fill, Catch Basin</b>							
2.010	Portland Cement	bag	5.50					
2.020	Crushed Gravel 3/4"	cu.m	0.30					
2.030	Washed Sand	cu.m	0.60					
	<b>Sub-total</b>							
<b>3.00</b>	<b>Rebar Works</b>	kg	<b>18.99</b>					
	<b>Wall Footing, Slab on Fill, Catch Basin</b>	kg	18.99					
3.010	Deformed Round Bars, Grade 33	kg	18.99					
3.040	G.I. Tie Wire	kg	0.25					
	<b>Sub-total</b>							
<b>4.00</b>	<b>Formworks</b>	lot	<b>1.00</b>					
4.010	Rough Lumber	bd.ft	17.00					
4.050	Phenolic Board, 1/2"x4"x8'	pc	1.00					
4.040	CWN, Assorted	kg	1.00					
	<b>Sub-total</b>							
<b>5.00</b>	<b>Masonry Works</b>	sq.m.	<b>13.44</b>					
	<b>CHB Laying and Plastering</b>							
5.010	Demolition of Masonry Wall	sq.m	1.89	-		-		
5.020	Portland Cement	bag	6.00					
5.030	Washed Sand	cu.m	0.75					
5.040	CHB 4" thk	pc	177.00					
5.070	D10mm RSB	kg	6.90					
5.110	G.I. Tie Wire	kg	0.25					
	<b>Sub-total</b>							
<b>6.00</b>	<b>Doors and Windows</b>	lot	<b>1.00</b>					
6.010	Removal of Door with Jamb	set	2.00	-		-		
6.020	Removal of Window with Jamb	sq.m	0.36	-		-		

LD. NO	DESCRIPTION	UNIT	QTY	UNIT COST		TOTAL COST		GRAND TOTAL
				MATERIAL	LABOR	MATERIAL	LABOR	
6.160	Panel Door 0.70m x 2.10m	pc	2.00					
6.290	Door Jamb 45mm x 150mm	set	2.00					
6.330	Entrance, Lockset, Lever Type	set	2.00					
6.381	Hinges, Stainless 3-1/2" x 3-1/2", Heavy Duty , Five Knuckles	pa	2.00					
6.300	Steel Encased Clear Glass Window with Grilles	sq.ft	5.16					
	<b>Sub-total</b>							
<b>7.00</b>	<b>Steel Works</b>	<b>lot</b>	<b>1.00</b>					
	<b>Rafters, Purlins, Facia</b>							
7.090	LC 150 x 50 x 15 x 2.0mm	kg	2.00					
7.031	LC 75 x 38 x 15 x 1.5mm	pc	2.00					
7.780	Welding Rod	kg	1.00					
	<b>Sub-total</b>							
<b>8.00</b>	<b>Roofing Works</b>	<b>sq.m.</b>	<b>3.02</b>					
8.180	Long-Span Roofing, Rib-Type, Pre-Painted, 1220mm x 0.5mm thk	m	3.17					
8.250	Flashing, Pre-Painted, Spanish, 0.610m x 2.440m x 0.4mm thk	pc	2.00					
8.290	Gutter, Pre-Painted, Spanish, 0.610m x 2.440m x 0.6mm thk	pc	2.00					
8.350	Teckscrew 2-1/2"	pc	28.00					
8.371	Blind Rivets	pc	23.00					
	<b>Sub-total</b>							
<b>9.00</b>	<b>Carpentry Works</b>	<b>lot</b>	<b>1.00</b>					
	<b>Interior Ceiling</b>	<b>sq.m.</b>	<b>5.26</b>					
9.530	Metal Carrying Channel (12mm x 38mm x 5m x 0.8mm thk)	pc	2.00					
9.550	Metal Double Furring Channel (19mm x 50mm x 5m x 0.5mm thk)	pc	3.00					
9.580	W Clip	pc	9.00					
9.710	250x3028mm Woodgrained PVC Ceiling Panel	pc	8.00					
9.720	J-Edge Trim, PVC	pc	4.00					
9.630	Blind Rivets	pc	55.00					
	<b>Exterior Ceiling</b>	<b>sq.m.</b>	<b>1.44</b>					
9.710	250x3028mm Woodgrained PVC Ceiling Panel	pc	3.00					
9.720	J-Edge Trim, PVC	pc	3.00					
9.100	Fiber Cement Board, 3/16" x 4' x 8'	pc	1.00					
9.660	Wooden Ceiling Ventilation (25mm x 25mm x 300m x 1200mm with Wire Mesh)	pc	1.00					
9.640	Assorted Nails	kg	14.00					
	<b>Facia</b>	<b>lot</b>	<b>1.00</b>					
9.190	Fascia Board, Fiber Cement 12" x 8"	pc	2.00					
9.630	Blind Rivets	pc	16.00					
	<b>Sub-total</b>							
<b>10.00</b>	<b>Electrical Works</b>	<b>lot</b>	<b>1.00</b>					
10.010	Electrical Conduit uPVC, 15mmØ	pc	3.00					
10.030	Long Elbow Electrical Conduit uPVC, 20mmØ	pc	4.00					
10.120	2.5 mm2 THW Wire, Stranded	m	40.00					
10.180	Junction Box, 4" x 4" PVC	pc	2.00					
10.190	Utility Box, 2" x 4" PVC	pc	1.00					
10.340	Single Switch with Plate	pc	2.00					
10.252	4" Light Receptacle with 20w LED Bulbs	set	2.00					
	<b>Sub-total</b>							

I.D. NO	DESCRIPTION	UNIT	QTY	UNIT COST		TOTAL COST		GRAND TOTAL
				MATERIAL	LABOR	MATERIAL	LABOR	
<b>11.00</b>	<b>Plumbing Works</b>	<b>lot</b>	<b>1.00</b>					
11.060	PP-R Pipe 1/2"Ø	pc	5.00					
11.070	PP-R Coupling, 1/2"Ø	pc	6.00					
11.130	PP-R Tee, 1/2"Ø	pc	2.00					
11.180	PP-R Elbow 90o x 1/2"Ø	pc	12.00					
11.300	PP-R Plastic Union, 1/2"Ø	pc	2.00					
11.310	PP-R Gate Valve, 1/2"Ø	pc	1.00					
11.921	Faucet, Lever Type, Goose Neck, SS 1/2"Ø	pc	2.00					
11.320	PP-R Adaptor Female Threaded, 1/2"Ø	pc	4.00					
12.091	S.S. Sink and P-Trap (Single)	set	1.00					
11.960	Lavatory, Pedestal Type with Accessories	set	1.00					
11.940	Water Closet 1.6gpi with Accessories	set	2.00					
11.930	Water Closet Flange	set	2.00					
11.893	SS Angle Valve 3/8" x 1/2"Ø, Single Outlet, Cross/Round Handle	pc	4.00					
11.891	Flexible Hose, 1/2" Ø x 16"	pc	2.00					
12.020	Teflon Tape	roll	1.00					
12.010	S.S.Floor Drain 4" x 4"	pc	2.00					
12.060	±500x800mm Frameless Mirror	pc	4.00					
12.030	Tissue Holder	pc	2.00					
12.041	SS Wall Mounted Soap Holder	pc	2.00					
	<b>Sub-total</b>							
<b>12.00</b>	<b>Sanitary Works</b>	<b>lot</b>	<b>1.00</b>					
	<b>WC &amp; Roof, Sink, Floor Drains</b>							
12.280	uPVC Sanitary Pipe 3"Ø	pc	4.00					
12.320	uPVC Elbow 90o x 3"Ø	pc	4.00					
12.350	uPVC Elbow 1/8 x 3"Ø	pc	4.00					
12.371	uPVC Cleanout x 3"Ø	pc	1.00					
12.440	uPVC Wye 2" x 3"	pc	4.00					
12.270	uPVC Sanitary Pipe 2"Ø	pc	4.00					
12.310	uPVC Elbow 90o x 2"Ø	pc	4.00					
12.380	uPVC Tee 2" x 2"	pc	4.00					
12.373	uPVC Coupling x 2"Ø	pc	4.00					
12.170	Catch Basin	unit	1.00					
	<b>Sub-total</b>							
<b>13.00</b>	<b>Painting Works</b>	<b>sq.m.</b>	<b>27.04</b>					
	<b>Concrete Surface</b>	<b>sq.m.</b>	<b>27.04</b>					
13.010	Surface Preparation	sq.m.	27.04	-		-		
13.020	Latex, Flat	gal	2.00					
13.040	Latex, Gloss	gal	2.00					
13.150	Masonry Putty	gal	2.00					
13.230	Tinting Color	qrt	1.00					
13.390	Assorted Paint Brush/Roller	pc	2.00					
	<b>Sub-total</b>							
<b>14.00</b>	<b>Tile Works</b>	<b>sq.m.</b>	<b>34.61</b>					
	<b>Sink Countertop, Walls and Floor</b>							
1.070	Chipping Works	sq.m.	8.24	-	285.00	-		
1.071	Removal of Tiles	sq.m.	7.87	-	85.50	-		
14.012	Granite Tiles 60cm x 120cm (Polished)	pc	44.00					
14.013	Granite Tiles 60cm x 120cm (Non-skid)	pc	8.00					
14.210	Tile Adhesive 25 kg/bag	bag	7.00					
5.020	Portland Cement	bag	13.00					
5.030	Washed Sand	cu.m	0.30					
14.190	Tile Grout 2 kg/bag	bag	3.00					
14.201	Tile Spacer, 4mm	pc	100.00					

LD. NO	DESCRIPTION	UNIT	QTY	UNIT COST		TOTAL COST		GRAND TOTAL
				MATERIAL	LABOR	MATERIAL	LABOR	
	Sub-total							
	<b>GENERAL REQUIREMENTS</b>							-
<b>I.</b>	<b>DIRECT COST</b>							-
<b>II.</b>	<b>INDIRECT COST</b>							-
	OVERHEAD EXPENSES ( _% )							-
	CONTINGENCIES ( _% )							-
	MISCELLANEOUS ( _% )							-
	CONTRACTORS PROFIT ( _% )							-
<b>III.</b>	<b>TAX</b>							-
<b>IV.</b>	<b>TOTAL CONSTRUCTION COST</b>							-

Prepared by:

\_\_\_\_\_  
Contractor / Representative



***Section IX. Checklist of Technical and Financial Documents***

# Checklist of Technical and Financial Documents

## I. TECHNICAL COMPONENT ENVELOPE

### *Class "A" Documents*

#### Legal Documents

- (a) Valid PhilGEPS Registration Certificate (Platinum Membership) (all pages);  
**or**
- (b) Registration certificate from Securities and Exchange Commission (SEC), Department of Trade and Industry (DTI) for sole proprietorship, or Cooperative Development Authority (CDA) for cooperatives or its equivalent document;  
**and**
- (c) Mayor's or Business permit issued by the city or municipality where the principal place of business of the prospective bidder is located, or the equivalent document for Exclusive Economic Zones or Areas;  
**and**
- (e) Tax clearance per E.O. No. 398, s. 2005, as finally reviewed and approved by the Bureau of Internal Revenue (BIR).

#### Technical Documents

- (f) Statement of the prospective bidder of all its ongoing government and private contracts, including contracts awarded but not yet started, if any, whether similar or not similar in nature and complexity to the contract to be bid; **and**
- (g) Statement of the bidder's Single Largest Completed Contract (SLCC) similar to the contract to be bid, except under conditions provided under the rules;  
**and**
- (h) Philippine Contractors Accreditation Board (PCAB) License;  
**or**  
Special PCAB License in case of Joint Ventures;  
**and** registration for the type and cost of the contract to be bid; **and**
- (i) Original copy of Bid Security. If in the form of a Surety Bond, submit also a certification issued by the Insurance Commission;  
**or**  
Original copy of Notarized Bid Securing Declaration; **and**
- (j) Project Requirements, which shall include the following:
  - a. Organizational chart for the contract to be bid;
  - b. List of contractor's key personnel (e.g., Project Manager, Project Engineers, Materials Engineers, and Foremen), to be assigned to the contract to be bid, with their complete qualification and experience data;
  - c. List of contractor's major equipment units, which are owned, leased, and/or under purchase agreements, supported by proof of ownership or certification of availability of equipment from the equipment lessor/vendor for the duration of the project, as the case may be; **and**
- (k) Original duly signed Omnibus Sworn Statement (OSS);

**and** if applicable, Original Notarized Secretary's Certificate in case of a corporation, partnership, or cooperative; or Original Special Power of Attorney of all members of the joint venture giving full power and authority to its officer to sign the OSS and do acts to represent the Bidder.

**other requirement for submission:**

- Site Inspection Certificate signed by the Principal/Officer-In Charge/ Officer of the Day of the School. Site Inspection Certificate is to be accompanied by a picture of the project engineer/foreman/owner or any technical employee with the Gabaldon bldg. as the background

**Financial Documents**

- (l) The prospective bidder's audited financial statements, showing, among others, the prospective bidder's total and current assets and liabilities, stamped "received" by the BIR or its duly accredited and authorized institutions, for the preceding calendar year which should not be earlier than two (2) years from the date of bid submission; **and**
- (m) The prospective bidder's computation of Net Financial Contracting Capacity (NFCC).

***Class "B" Documents***

- (n) If applicable, duly signed joint venture agreement (JVA) in accordance with RA No. 4566 and its IRR in case the joint venture is already in existence; **or** duly notarized statements from all the potential joint venture partners stating that they will enter into and abide by the provisions of the JVA in the instance that the bid is successful.

**II. FINANCIAL COMPONENT ENVELOPE**

- (o) Original of duly signed and accomplished Financial Bid Form; **and**

**Other documentary requirements under RA No. 9184**

- (p) Original of duly signed Bid Prices in the Bill of Quantities; **and**
- (q) Duly accomplished Detailed Estimates Form, including a summary sheet indicating the unit prices of construction materials, labor rates, and equipment rentals used in coming up with the Bid; **and**
- (r) Cash Flow by Quarter.

**other requirement:**

- (s) USB/flash drive (soft copy of Financial proposal in excel format)

Republic of the Philippines



Government Procurement Policy Board