

**PHILIPPINE BIDDING DOCUMENTS**

**RESTORATION/  
REHABILITATION  
OF BAUKO  
CENTRAL  
SCHOOL  
GABALDON  
BUILDING**

Government of the Republic of the Philippines

**Sixth Edition  
July 2020**

# Preface

These Philippine Bidding Documents (PBDs) for the procurement of Infrastructure Projects (hereinafter referred to also as the “Works”) through Competitive Bidding have been prepared by the Government of the Philippines for use by all branches, agencies, departments, bureaus, offices, or instrumentalities of the government, including government-owned and/or -controlled corporations, government financial institutions, state universities and colleges, local government units, and autonomous regional government. The procedures and practices presented in this document have been developed through broad experience, and are for mandatory use in projects that are financed in whole or in part by the Government of the Philippines or any foreign government/foreign or international financing institution in accordance with the provisions of the 2016 revised Implementing Rules and Regulations (IRR) of Republic Act (RA) No. 9184.

The PBDs are intended as a model for admeasurements (unit prices or unit rates in a bill of quantities) types of contract, which are the most common in Works contracting.

The Bidding Documents shall clearly and adequately define, among others: (i) the objectives, scope, and expected outputs and/or results of the proposed contract; (ii) the eligibility requirements of Bidders; (iii) the expected contract duration; and (iv) the obligations, duties, and/or functions of the winning Bidder.

Care should be taken to check the relevance of the provisions of the PBDs against the requirements of the specific Works to be procured. If duplication of a subject is inevitable in other sections of the document prepared by the Procuring Entity, care must be exercised to avoid contradictions between clauses dealing with the same matter.

Moreover, each section is prepared with notes intended only as information for the Procuring Entity or the person drafting the Bidding Documents. They shall not be included in the final documents. The following general directions should be observed when using the documents:

- a. All the documents listed in the Table of Contents are normally required for the procurement of Infrastructure Projects. However, they should be adapted as necessary to the circumstances of the particular Project.
- b. Specific details, such as the “*name of the Procuring Entity*” and “*address for bid submission,*” should be furnished in the Instructions to Bidders, Bid Data Sheet, and Special Conditions of Contract. The final documents should contain neither blank spaces nor options.
- c. This Preface and the footnotes or notes in italics included in the Invitation to Bid, BDS, General Conditions of Contract, Special Conditions of Contract, Specifications, Drawings, and Bill of Quantities are not part of the text of the final document, although they contain instructions that the Procuring Entity should strictly follow.
- d. The cover should be modified as required to identify the Bidding Documents as to the names of the Project, Contract, and Procuring Entity, in addition to date of issue.

- e. **Modifications for specific Procurement Project details should be provided in the Special Conditions of Contract as amendments to the Conditions of Contract. For easy completion, whenever reference has to be made to specific clauses in the Bid Data Sheet or Special Conditions of Contract, these terms shall be printed in bold typeface on Sections I (Instructions to Bidders) and III (General Conditions of Contract), respectively.**
  
- f. **For guidelines on the use of Bidding Forms and the procurement of Foreign-Assisted Projects, these will be covered by a separate issuance of the Government Procurement Policy Board.**

## TABLE OF CONTENTS

<b>Glossary of Terms, Abbreviations, and Acronyms .....</b>	<b>5</b>
<b>Section I. Invitation to Bid.....</b>	<b>8</b>
<b>Section II. Instructions to Bidders.....</b>	<b>11</b>
1. Scope of Bid.....	12
2. Funding Information.....	12
3. Bidding Requirements .....	12
4. Corrupt, Fraudulent, Collusive, Coercive, and Obstructive Practices .....	12
5. Eligible Bidders .....	13
6. Origin of Associated Goods.....	13
7. Subcontracts.....	13
8. Pre-Bid Conference.....	13
9. Clarification and Amendment of Bidding Documents .....	14
10. Documents Comprising the Bid: Eligibility and Technical Components.....	14
11. Documents Comprising the Bid: Financial Component.....	14
12. Alternative Bids .....	15
13. Bid Prices.....	15
14. Bid and Payment Currencies.....	15
15. Bid Security .....	15
16. Sealing and Marking of Bids .....	15
17. Deadline for Submission of Bids .....	16
18. Opening and Preliminary Examination of Bids.....	16
19. Detailed Evaluation and Comparison of Bids.....	16
20. Post Qualification.....	16
21. Signing of the Contract.....	17
<b>Section III. Bid Data Sheet .....</b>	<b>18</b>
<b>Section IV. General Conditions of Contract.....</b>	<b>21</b>
1. Scope of Contract.....	22
2. Sectional Completion of Works.....	22
3. Possession of Site.....	22
4. The Contractor's Obligations.....	22
5. Performance Security.....	22
6. Site Investigation Reports.....	23

7.	Warranty .....	23
8.	Liability of the Contractor .....	23
9.	Termination for Other Causes.....	23
10.	Dayworks .....	23
11.	Program of Work .....	24
12.	Instructions, Inspections and Audits.....	24
13.	Advance Payment .....	24
14.	Progress Payments .....	24
15.	Operating and Maintenance Manuals .....	24
<b>Section V. Special Conditions of Contract.....</b>		<b>25</b>
<b>Section VI. Specifications.....</b>		<b>27</b>
<b>Section VII. Drawings .....</b>		<b>28</b>
<b>Section VIII. Bill of Quantities .....</b>		<b>30</b>
<b>Section IX. Checklist of Technical and Financial Documents .....</b>		<b>31</b>

# ***Glossary of Terms, Abbreviations, and Acronyms***

**ABC** – Approved Budget for the Contract.

**ARCC** – Allowable Range of Contract Cost.

**BAC** – Bids and Awards Committee.

**Bid** – A signed offer or proposal to undertake a contract submitted by a bidder in response to and in consonance with the requirements of the bidding documents. Also referred to as *Proposal* and *Tender*. (2016 revised IRR, Section 5[c])

**Bidder** – Refers to a contractor, manufacturer, supplier, distributor and/or consultant who submits a bid in response to the requirements of the Bidding Documents. (2016 revised IRR, Section 5[d])

**Bidding Documents** – The documents issued by the Procuring Entity as the bases for bids, furnishing all information necessary for a prospective bidder to prepare a bid for the Goods, Infrastructure Projects, and/or Consulting Services required by the Procuring Entity. (2016 revised IRR, Section 5[e])

**BIR** – Bureau of Internal Revenue.

**BSP** – Bangko Sentral ng Pilipinas.

**CDA** – Cooperative Development Authority.

**Consulting Services** – Refer to services for Infrastructure Projects and other types of projects or activities of the GOP requiring adequate external technical and professional expertise that are beyond the capability and/or capacity of the GOP to undertake such as, but not limited to: (i) advisory and review services; (ii) pre-investment or feasibility studies; (iii) design; (iv) construction supervision; (v) management and related services; and (vi) other technical services or special studies. (2016 revised IRR, Section 5[i])

**Contract** – Refers to the agreement entered into between the Procuring Entity and the Supplier or Manufacturer or Distributor or Service Provider for procurement of Goods and Services; Contractor for Procurement of Infrastructure Projects; or Consultant or Consulting Firm for Procurement of Consulting Services; as the case may be, as recorded in the Contract Form signed by the parties, including all attachments and appendices thereto and all documents incorporated by reference therein.

**Contractor** – is a natural or juridical entity whose proposal was accepted by the Procuring Entity and to whom the Contract to execute the Work was awarded. Contractor as used in these Bidding Documents may likewise refer to a supplier, distributor, manufacturer, or consultant.

**CPI** – Consumer Price Index.

**DOLE** – Department of Labor and Employment.

**DTI** – Department of Trade and Industry.

**Foreign-funded Procurement or Foreign-Assisted Project** – Refers to procurement whose funding source is from a foreign government, foreign or international financing institution as specified in the Treaty or International or Executive Agreement. (2016 revised IRR, Section 5[b]).

**GFI** – Government Financial Institution.

**GOCC** – Government-owned and/or –controlled corporation.

**Goods** – Refer to all items, supplies, materials and general support services, except Consulting Services and Infrastructure Projects, which may be needed in the transaction of public businesses or in the pursuit of any government undertaking, project or activity, whether in the nature of equipment, furniture, stationery, materials for construction, or personal property of any kind, including non-personal or contractual services such as the repair and maintenance of equipment and furniture, as well as trucking, hauling, janitorial, security, and related or analogous services, as well as procurement of materials and supplies provided by the Procuring Entity for such services. The term “related” or “analogous services” shall include, but is not limited to, lease or purchase of office space, media advertisements, health maintenance services, and other services essential to the operation of the Procuring Entity. (2016 revised IRR, Section 5[r])

**GOP** – Government of the Philippines.

**Infrastructure Projects** – Include the construction, improvement, rehabilitation, demolition, repair, restoration or maintenance of roads and bridges, railways, airports, seaports, communication facilities, civil works components of information technology projects, irrigation, flood control and drainage, water supply, sanitation, sewerage and solid waste management systems, shore protection, energy/power and electrification facilities, national buildings, school buildings, hospital buildings, and other related construction projects of the government. Also referred to as *civil works or works*. (2016 revised IRR, Section 5[u])

**LGUs** – Local Government Units.

**NFCC** – Net Financial Contracting Capacity.

**NGA** – National Government Agency.

**PCAB** – Philippine Contractors Accreditation Board.

**PhilGEPS** - Philippine Government Electronic Procurement System.

**Procurement Project** – refers to a specific or identified procurement covering goods, infrastructure project or consulting services. A Procurement Project shall be described, detailed, and scheduled in the Project Procurement Management Plan prepared by the agency which shall be consolidated in the procuring entity's Annual Procurement Plan. (GPPB Circular No. 06-2019 dated 17 July 2019)

**PSA** – Philippine Statistics Authority.

**SEC** – Securities and Exchange Commission.

**SLCC – Single Largest Completed Contract.**

**UN – United Nations.**



***Section I. Invitation to Bid***



Republic of the Philippines  
**Department of Education**  
Cordillera Administrative Region

---

**Invitation to Bid for the  
Restoration/Rehabilitation of Bauko Central School  
Gabaldon Building**

1. The Department of Education – Cordillera Administrative Region Regional Office, through the 2021 General Appropriations Act, intends to apply the sum of **Thirty Eight Million Six Hundred Forty Thousand Two Hundred One pesos and 57/100 (Php 38,640,201.57) only**, being the Approved Budget for the Contract (ABC) to payments under the contract for **Restoration/Rehabilitation of Bauko Central School Gabaldon Building** with identification number **CB 2021-008**. Bids received in excess of the ABC shall be automatically rejected at bid opening.
2. The DepED-CAR RO now invites bids for the above Procurement Project. Completion of the Works is required within 240 calendar days. Bidders should have completed a contract similar to the Project. The description of an eligible bidder is contained in the Bidding Documents, particularly, in Section II (Instructions to Bidders).
3. Bidding will be conducted through open competitive bidding procedures using non-discretionary “*pass/fail*” criterion as specified in the 2016 revised Implementing Rules and Regulations (IRR) of Republic Act (RA) No. 9184.
4. Interested bidders may obtain further information from DepED-CAR Regional Office and inspect the Bidding Documents at the address given below from 8:00am to 5:00pm, Mondays to Fridays.
5. A complete set of Bidding Documents may be acquired by interested bidders starting April 30, 2021 from the given address and website/s below and upon payment of the applicable fee for the Bidding Documents, pursuant to the latest Guidelines issued by the GPPB, in the amount of **Php 25,000.00**. The Procuring Entity shall allow the bidder to present its proof of payment for the fees in person, by facsimile, or through electronic means.
6. The DepEd-CAR Regional Office will hold a **Pre-Bid Conference on Gabaldon buildings on May 7, 2021 at 9am at the SNC Hall, DepED-CAR Regional office, Wangal, La Trinidad, Benguet**, which shall be open to prospective bidders.
7. Bids must be duly received by the BAC Secretariat through manual submission at the office address as indicated below, **on or before 9am of May 19, 2021**. Late bids shall not be accepted.
8. All bids must be accompanied by a bid security in any of the acceptable forms and in the amount stated in **ITB** Clause 16.





Republic of the Philippines  
**Department of Education**  
Cordillera Administrative Region

9. **Bid opening shall be on May 19, 2021 (Wednesday) at 9:01am at the covered court of the DepED-CAR RO, Wangal, La Trinidad, Benguet.** Bids will be opened in the presence of the bidders' representatives who choose to attend the activity.
10. The DepED-CAR Regional Office reserves the right to reject any and all bids, declare a failure of bidding, or not award the contract at any time prior to contract award in accordance with Sections 35.6 and 41 of the 2016 revised Implementing Rules and Regulations (IRR) of RA No. 9184, without thereby incurring any liability to the affected bidder or bidders.
11. For further information, please refer to:

*BAC Secretariat  
DepED-CAR Regional Office  
Wangal, La Trinidad, Benguet  
Tel. No. (074) 422-1804/(074) 422-5155  
Email address: [depedcar.bacsecretariat@gmail.com](mailto:depedcar.bacsecretariat@gmail.com)*

12. You may visit the following websites:

For downloading of Bidding Documents: ***depedcar.ph***

April 29, 2021

  
**FLORANTE E. VERGARA**  
BAC Chairperson



## ***Section II. Instructions to Bidders***

## 1. **Scope of Bid**

The Procuring Entity, DepED-CAR Regional Office, invites Bids for the **Restoration/Rehabilitation of Bauko Central School Gabaldon Building, with Project Identification Number CB 2021-008.**

The Procurement Project (referred to herein as “Project”) is for the construction of Works, as described in Section VI (Specifications).

## 2. **Funding Information**

2.1. The GOP through the source of funding as indicated below for CY 2021 in the amounts of **Thirty Eight Million Six Hundred Forty Thousand Two Hundred One pesos and 57/100 (Php 38,640,201.57) only.**

2.2. The source of funding is:

- a. NGA, the General Appropriations Act or Special Appropriations.

## 3. **Bidding Requirements**

The Bidding for the Project shall be governed by all the provisions of RA No. 9184 and its 2016 revised IRR, including its Generic Procurement Manual and associated policies, rules and regulations as the primary source thereof, while the herein clauses shall serve as the secondary source thereof.

Any amendments made to the IRR and other GPPB issuances shall be applicable only to the ongoing posting, advertisement, or invitation to bid by the BAC through the issuance of a supplemental or bid bulletin.

The Bidder, by the act of submitting its Bid, shall be deemed to have inspected the site, determined the general characteristics of the contracted Works and the conditions for this Project, such as the location and the nature of the work; (b) climatic conditions; (c) transportation facilities; (c) nature and condition of the terrain, geological conditions at the site communication facilities, requirements, location and availability of construction aggregates and other materials, labor, water, electric power and access roads; and (d) other factors that may affect the cost, duration and execution or implementation of the contract, project, or work and examine all instructions, forms, terms, and project requirements in the Bidding Documents.

## 4. **Corrupt, Fraudulent, Collusive, Coercive, and Obstructive Practices**

The Procuring Entity, as well as the Bidders and Contractors, shall observe the highest standard of ethics during the procurement and execution of the contract. They or through an agent shall not engage in corrupt, fraudulent, collusive, coercive, and

obstructive practices defined under Annex “T” of the 2016 revised IRR of RA No. 9184 or other integrity violations in competing for the Project.

## **5. Eligible Bidders**

- 5.1. Only Bids of Bidders found to be legally, technically, and financially capable will be evaluated.
- 5.2. The Bidder must have an experience of having completed a Single Largest Completed Contract (SLCC) that is similar to this Project, equivalent to at least fifty percent (50%) of the ABC adjusted, if necessary, by the Bidder to current prices using the PSA’s CPI, except under conditions provided for in Section 23.4.2.4 of the 2016 revised IRR of RA No. 9184.

A contract is considered to be “similar” to the contract to be bid if it has the major categories of work stated in the **BDS**.

- 5.3. For Foreign-funded Procurement, the Procuring Entity and the foreign government/foreign or international financing institution may agree on another track record requirement, as specified in the Bidding Document prepared for this purpose.
- 5.4. The Bidders shall comply with the eligibility criteria under Section 23.4.2 of the 2016 IRR of RA No. 9184.

## **6. Origin of Associated Goods**

There is no restriction on the origin of Goods other than those prohibited by a decision of the UN Security Council taken under Chapter VII of the Charter of the UN.

## **7. Subcontracts**

- 7.1. The Bidder may subcontract portions of the Project to the extent allowed by the Procuring Entity as stated herein, but in no case more than fifty percent (50%) of the Project.

**The Procuring Entity has prescribed that:**

- a. **Subcontracting is not allowed.**

- 7.1. Subcontracting of any portion of the Project does not relieve the Contractor of any liability or obligation under the Contract. The Supplier will be responsible for the acts, defaults, and negligence of any subcontractor, its agents, servants, or workmen as fully as if these were the Contractor’s own acts, defaults, or negligence, or those of its agents, servants, or workmen.

## **8. Pre-Bid Conference**

The Procuring Entity will hold a pre-bid conference for this Project on the specified date and time and at its physical address, at the SNC Hall, DepED-CAR Regional

Office, Wangal, La Trinidad, Benguet, on May 7, 2021 at 9am as indicated in paragraph 6 of the **IB**.

## **9. Clarification and Amendment of Bidding Documents**

Prospective bidders may request for clarification on and/or interpretation of any part of the Bidding Documents. Such requests must be in writing and received by the Procuring Entity, either at its given address or through electronic mail indicated in the **IB**, at least ten (10) calendar days before the deadline set for the submission and receipt of Bids.

## **10. Documents Comprising the Bid: Eligibility and Technical Components**

- 10.1. The first envelope shall contain the eligibility and technical documents of the Bid as specified in **Section IX. Checklist of Technical and Financial Documents**.
- 10.2. If the eligibility requirements or statements, the bids, and all other documents for submission to the BAC are in foreign language other than English, it must be accompanied by a translation in English, which shall be authenticated by the appropriate Philippine foreign service establishment, post, or the equivalent office having jurisdiction over the foreign bidder's affairs in the Philippines. For Contracting Parties to the Apostille Convention, only the translated documents shall be authenticated through an apostille pursuant to GPPB Resolution No. 13-2019 dated 23 May 2019. The English translation shall govern, for purposes of interpretation of the bid.
- 10.3. A valid PCAB License is required, and in case of joint ventures, a valid special PCAB License, and registration for the type and cost of the contract for this Project. Any additional type of Contractor license or permit shall be indicated in the **BDS**.
- 10.4. A List of Contractor's key personnel (e.g., Project Manager, Project Engineers, Materials Engineers, and Foremen) assigned to the contract to be bid, with their complete qualification and experience data shall be provided. These key personnel must meet the required minimum years of experience set in the **BDS**.
- 10.5. A List of Contractor's major equipment units, which are owned, leased, and/or under purchase agreements, supported by proof of ownership, certification of availability of equipment from the equipment lessor/vendor for the duration of the project, as the case may be, must meet the minimum requirements for the contract set in the **BDS**.

## **11. Documents Comprising the Bid: Financial Component**

- 11.1. The second bid envelope shall contain the financial documents for the Bid as specified in **Section IX. Checklist of Technical and Financial Documents**.

- 11.2. Any bid exceeding the ABC indicated in paragraph 1 of the **IB** shall not be accepted.
- 11.3. For Foreign-funded procurement, a ceiling may be applied to bid prices provided the conditions are met under Section 31.2 of the 2016 revised IRR of RA No. 9184.

## **12. Alternative Bids**

Bidders shall submit offers that comply with the requirements of the Bidding Documents, including the basic technical design as indicated in the drawings and specifications. Unless there is a value engineering clause in the **BDS**, alternative Bids shall not be accepted.

## **13. Bid Prices**

All bid prices for the given scope of work in the Project as awarded shall be considered as fixed prices, and therefore not subject to price escalation during contract implementation, except under extraordinary circumstances as determined by the NEDA and approved by the GPPB pursuant to the revised Guidelines for Contract Price Escalation guidelines.

## **14. Bid and Payment Currencies**

14.1. Bid prices may be quoted in the local currency or tradeable currency accepted by the BSP at the discretion of the Bidder. However, for purposes of bid evaluation, Bids denominated in foreign currencies shall be converted to Philippine currency based on the exchange rate as published in the BSP reference rate bulletin on the day of the bid opening.

14.2. *Payment of the contract price shall be made in:*

- a. **Philippine Pesos.**

## **15. Bid Security**

15.1. The Bidder shall submit a Bid Securing Declaration or any form of Bid Security in the amount indicated in the **BDS**, which shall be not less than the percentage of the ABC in accordance with the schedule in the **BDS**.

15.2. The Bid and bid security shall be valid until September 16, 2021. Any bid not accompanied by an acceptable bid security shall be rejected by the Procuring Entity as non-responsive.

## **16. Sealing and Marking of Bids**

Each Bidder shall submit one copy of the first and second components of its Bid.



The Procuring Entity may request additional hard copies and/or electronic copies of the Bid. However, failure of the Bidders to comply with the said request shall not be a ground for disqualification.

If the Procuring Entity allows the submission of bids through online submission to the given website or any other electronic means, the Bidder shall submit an electronic copy of its Bid, which must be digitally signed. An electronic copy that cannot be opened or is corrupted shall be considered non-responsive and, thus, automatically disqualified.

## **17. Deadline for Submission of Bids**

The Bidders shall submit on the specified date and time and either at its physical address or through online submission as indicated in paragraph 7 of the **IB**.

## **18. Opening and Preliminary Examination of Bids**

18.1. The BAC shall open the Bids in public at the time, on the date, and at the place specified in paragraph 9 of the **IB**. The Bidders' representatives who are present shall sign a register evidencing their attendance. In case videoconferencing, webcasting or other similar technologies will be used, attendance of participants shall likewise be recorded by the BAC Secretariat.

In case the Bids cannot be opened as scheduled due to justifiable reasons, the rescheduling requirements under Section 29 of the 2016 revised IRR of RA No. 9184 shall prevail.

18.2. The preliminary examination of Bids shall be governed by Section 30 of the 2016 revised IRR of RA No. 9184.

## **19. Detailed Evaluation and Comparison of Bids**

19.1. The Procuring Entity's BAC shall immediately conduct a detailed evaluation of all Bids rated "*passed*" using non-discretionary pass/fail criteria. The BAC shall consider the conditions in the evaluation of Bids under Section 32.2 of 2016 revised IRR of RA No. 9184.

19.2. If the Project allows partial bids, all Bids and combinations of Bids as indicated in the **BDS** shall be received by the same deadline and opened and evaluated simultaneously so as to determine the Bid or combination of Bids offering the lowest calculated cost to the Procuring Entity. Bid Security as required by **ITB** Clause 15 shall be submitted for each contract (lot) separately.

19.3. In all cases, the NFCC computation pursuant to Section 23.4.2.6 of the 2016 revised IRR of RA No. 9184 must be sufficient for the total of the ABCs for all the lots participated in by the prospective Bidder.

## **20. Post Qualification**

Within a non-extendible period of five (5) calendar days from receipt by the Bidder of the notice from the BAC that it submitted the Lowest Calculated Bid, the Bidder shall submit its latest income and business tax returns filed and paid through the BIR Electronic Filing and Payment System (eFPS), and other appropriate licenses and permits required by law and stated in the **BDS**.

## **21. Signing of the Contract**

The documents required in Section 37.2 of the 2016 revised IRR of RA No. 9184 shall form part of the Contract. Additional Contract documents are indicated in the **BDS**.

### ***Section III. Bid Data Sheet***

# Bid Data Sheet

ITB Clause																						
5.2	For this purpose, contracts similar to the Project refer to contracts which have the same major categories of work, which shall be: <i>Restoration/Rehabilitation/Conservation of Heritage Building/Gabaldon School Buildings</i>																					
7.1	Subcontracting is not allowed																					
10.1	To be included in the Technical Documents is a Site Inspection Certificate signed by the Principal/Officer-In Charge/ Officer of the Day of the School. Site Inspection Certificate is to be accompanied by a picture of either the project engineer/foreman/owner or any technical employee with the Gabaldon bldg. as the background																					
10.3	<i>No further instructions</i>																					
10.4	The key personnel must meet the required minimum years of experience set below: <table border="1" style="width: 100%; border-collapse: collapse;"> <thead> <tr> <th style="text-align: left;"><u>Key Personnel</u></th> <th style="text-align: center;"><u>General Experience</u></th> <th style="text-align: center;"><u>Relevant Experience</u></th> </tr> </thead> <tbody> <tr> <td>Project Engineer</td> <td style="text-align: center;">5 years</td> <td style="text-align: center;">3 years</td> </tr> <tr> <td>Safety Officer</td> <td style="text-align: center;">2 years</td> <td style="text-align: center;">1 years</td> </tr> <tr> <td>General foreman</td> <td style="text-align: center;">3 years</td> <td style="text-align: center;">2 years</td> </tr> <tr> <td>Skilled Mason</td> <td style="text-align: center;">2 years</td> <td style="text-align: center;">1 year</td> </tr> <tr> <td>Skilled Carpenters</td> <td style="text-align: center;">2 years</td> <td style="text-align: center;">1 year</td> </tr> <tr> <td>Skilled welders</td> <td style="text-align: center;">2 years</td> <td style="text-align: center;">1 year (AS NEEDED)</td> </tr> </tbody> </table>	<u>Key Personnel</u>	<u>General Experience</u>	<u>Relevant Experience</u>	Project Engineer	5 years	3 years	Safety Officer	2 years	1 years	General foreman	3 years	2 years	Skilled Mason	2 years	1 year	Skilled Carpenters	2 years	1 year	Skilled welders	2 years	1 year (AS NEEDED)
<u>Key Personnel</u>	<u>General Experience</u>	<u>Relevant Experience</u>																				
Project Engineer	5 years	3 years																				
Safety Officer	2 years	1 years																				
General foreman	3 years	2 years																				
Skilled Mason	2 years	1 year																				
Skilled Carpenters	2 years	1 year																				
Skilled welders	2 years	1 year (AS NEEDED)																				
10.5	The minimum major equipment requirements are the following: <table border="1" style="width: 100%; border-collapse: collapse;"> <thead> <tr> <th style="text-align: left;"><u>Equipment</u></th> <th style="text-align: center;"><u>Capacity</u></th> <th style="text-align: center;"><u>Number of Units</u></th> </tr> </thead> <tbody> <tr> <td>Dumptruck/elf</td> <td style="text-align: center;">2 cu.m.</td> <td style="text-align: center;">1</td> </tr> <tr> <td>Concrete Mixer</td> <td style="text-align: center;">1 bagger</td> <td style="text-align: center;">1</td> </tr> <tr> <td>Shoring Jack</td> <td></td> <td></td> </tr> <tr> <td colspan="3">Various Power hand tools (FOR WOODWORKS)</td> </tr> </tbody> </table>	<u>Equipment</u>	<u>Capacity</u>	<u>Number of Units</u>	Dumptruck/elf	2 cu.m.	1	Concrete Mixer	1 bagger	1	Shoring Jack			Various Power hand tools (FOR WOODWORKS)								
<u>Equipment</u>	<u>Capacity</u>	<u>Number of Units</u>																				
Dumptruck/elf	2 cu.m.	1																				
Concrete Mixer	1 bagger	1																				
Shoring Jack																						
Various Power hand tools (FOR WOODWORKS)																						
11.1	The second bid envelope/financial component should include a USB/flash drive (soft copy of Financial proposal in excel format)																					
12	No further instructions																					
15.1	The bid security shall be in the form of a Bid Securing Declaration or any of the following forms and amounts: <ul style="list-style-type: none"> <li>a. The amount of not less than <u>Php772,804.03</u> [<i>Two percent (2%) of ABC</i>], if bid security is in cash, cashier's/manager's check, bank draft/guarantee or irrevocable letter of credit;</li> <li>b. The amount of not less than <u>Php 1,932,010.08</u> [<i>five percent (5%) of ABC</i>] if bid security is in Surety Bond.</li> </ul>																					

16	Each bidder is requested to submit three (3) copies/sets – 1 original and 2 photocopies – of the first and second component of its bid. The use of tabs is also encouraged to facilitate examination of documents.
19.2	The project is packaged into 1 lot and shall not be divided into sub-lots for the purpose of bidding, evaluation and contract award.
20	
21	<p>Additional contract documents relevant to the Project that may be required by existing laws and/or the Procuring Entity:</p> <ul style="list-style-type: none"> <li>a) Performance Security in the form and amount per calculated bid;</li> <li>b) Contractor's All Risk Insurance (CARI), coverage of which starts upon commencement of work;</li> <li>c) Construction Safety and Health Program approved by the Department of Labor;</li> <li>d) Manpower Schedule;</li> <li>e) Construction Methods; and,</li> <li>f) Equipment Utilization Schedule.</li> </ul>

## ***Section IV. General Conditions of Contract***

## **1. Scope of Contract**

This Contract shall include all such items, although not specifically mentioned, that can be reasonably inferred as being required for its completion as if such items were expressly mentioned herein. All the provisions of RA No. 9184 and its 2016 revised IRR, including the Generic Procurement Manual, and associated issuances, constitute the primary source for the terms and conditions of the Contract, and thus, applicable in contract implementation. Herein clauses shall serve as the secondary source for the terms and conditions of the Contract.

This is without prejudice to Sections 74.1 and 74.2 of the 2016 revised IRR of RA No. 9184 allowing the GPPB to amend the IRR, which shall be applied to all procurement activities, the advertisement, posting, or invitation of which were issued after the effectivity of the said amendment.

## **2. Sectional Completion of Works**

If sectional completion is specified in the **Special Conditions of Contract (SCC)**, references in the Conditions of Contract to the Works, the Completion Date, and the Intended Completion Date shall apply to any Section of the Works (other than references to the Completion Date and Intended Completion Date for the whole of the Works).

## **3. Possession of Site**

3.1 The Procuring Entity shall give possession of all or parts of the Site to the Contractor based on the schedule of delivery indicated in the SCC, which corresponds to the execution of the Works. If the Contractor suffers delay or incurs cost from failure on the part of the Procuring Entity to give possession in accordance with the terms of this clause, the Procuring Entity's Representative shall give the Contractor a Contract Time Extension and certify such sum as fair to cover the cost incurred, which sum shall be paid by Procuring Entity.

3.2 If possession of a portion is not given by the above date, the Procuring Entity will be deemed to have delayed the start of the relevant activities. The resulting adjustments in contract time to address such delay may be addressed through contract extension provided under Annex "E" of the 2016 revised IRR of RA No. 9184.

## **4. The Contractor's Obligations**

The Contractor shall employ the key personnel named in the Schedule of Key Personnel indicating their designation, in accordance with **ITB Clause 10.3** and specified in the **BDS**, to carry out the supervision of the Works.

The Procuring Entity will approve any proposed replacement of key personnel only if their relevant qualifications and abilities are equal to or better than those of the personnel listed in the Schedule.

## **5. Performance Security**

- 5.1. Within ten (10) calendar days from receipt of the Notice of Award from the Procuring Entity but in no case later than the signing of the contract by both parties, the successful Bidder shall furnish the performance security in any of the forms prescribed in Section 39 of the 2016 revised IRR.
- 5.2. The Contractor, by entering into the Contract with the Procuring Entity, acknowledges the right of the Procuring Entity to institute action pursuant to RA No. 3688 against any subcontractor be they an individual, firm, partnership, corporation, or association supplying the Contractor with labor, materials and/or equipment for the performance of this Contract.

## **6. Site Investigation Reports**

The Contractor, in preparing the Bid, shall rely on any Site Investigation Reports referred to in the SCC supplemented by any information obtained by the Contractor.

## **7. Warranty**

- 7.1. In case the Contractor fails to undertake the repair works under Section 62.2.2 of the 2016 revised IRR, the Procuring Entity shall forfeit its performance security, subject its property(ies) to attachment or garnishment proceedings, and perpetually disqualify it from participating in any public bidding. All payables of the GOP in his favor shall be offset to recover the costs.
- 7.2. The warranty against Structural Defects/Failures, except that occasioned-on force majeure, shall cover the period from the date of issuance of the Certificate of Final Acceptance by the Procuring Entity. Specific duration of the warranty is found in the SCC.

## **8. Liability of the Contractor**

Subject to additional provisions, if any, set forth in the SCC, the Contractor's liability under this Contract shall be as provided by the laws of the Republic of the Philippines.

If the Contractor is a joint venture, all partners to the joint venture shall be jointly and severally liable to the Procuring Entity.

## **9. Termination for Other Causes**

Contract termination shall be initiated in case it is determined *prima facie* by the Procuring Entity that the Contractor has engaged, before, or during the implementation of the contract, in unlawful deeds and behaviors relative to contract acquisition and implementation, such as, but not limited to corrupt, fraudulent, collusive, coercive, and obstructive practices as stated in ITB Clause 4.

## **10. Dayworks**

Subject to the guidelines on Variation Order in Annex "E" of the 2016 revised IRR of RA No. 9184, and if applicable as indicated in the SCC, the Dayworks rates in the



Contractor's Bid shall be used for small additional amounts of work only when the Procuring Entity's Representative has given written instructions in advance for additional work to be paid for in that way.

## **11. Program of Work**

11.1. The Contractor shall submit to the Procuring Entity's Representative for approval the said Program of Work showing the general methods, arrangements, order, and timing for all the activities in the Works. The submissions of the Program of Work are indicated in the SCC.

11.2. The Contractor shall submit to the Procuring Entity's Representative for approval an updated Program of Work at intervals no longer than the period stated in the SCC. If the Contractor does not submit an updated Program of Work within this period, the Procuring Entity's Representative may withhold the amount stated in the SCC from the next payment certificate and continue to withhold this amount until the next payment after the date on which the overdue Program of Work has been submitted.

## **12. Instructions, Inspections and Audits**

The Contractor shall permit the GOP or the Procuring Entity to inspect the Contractor's accounts and records relating to the performance of the Contractor and to have them audited by auditors of the GOP or the Procuring Entity, as may be required.

## **13. Advance Payment**

The Procuring Entity shall, upon a written request of the Contractor which shall be submitted as a Contract document, make an advance payment to the Contractor in an amount not exceeding fifteen percent (15%) of the total contract price, to be made in lump sum, or at the most two installments according to a schedule specified in the SCC, subject to the requirements in Annex "E" of the 2016 revised IRR of RA No. 9184.

## **14. Progress Payments**

The Contractor may submit a request for payment for Work accomplished. Such requests for payment shall be verified and certified by the Procuring Entity's Representative/Project Engineer. Except as otherwise stipulated in the SCC, materials and equipment delivered on the site but not completely put in place shall not be included for payment.

## **15. Operating and Maintenance Manuals**

15.1. If required, the Contractor will provide "as built" Drawings and/or operating and maintenance manuals as specified in the SCC.

15.2. If the Contractor does not provide the Drawings and/or manuals by the dates stated above, or they do not receive the Procuring Entity's Representative's approval, the Procuring Entity's Representative may withhold the amount stated in the SCC from payments due to the Contractor.

## ***Section V. Special Conditions of Contract***

## Special Conditions of Contract

GCC Clause	
2	<i>The Intended completion date per lot is 240 calendar days</i>
4.1	<i>The procuring entity shall give possession of all parts of the site to the contractor within 7 days from receipt of the Notice to Proceed.</i>
6	<i>The site investigation reports are: none</i>
7.2	<p><i>In case of semi-permanent structures, such as buildings of types 1, 2, and 3 as classified under the National Building Code of the Philippines, concrete/asphalt roads, concrete river control, drainage, irrigation lined canals, river landing, deep wells, rock causeway, pedestrian overpass, and other similar semi-permanent structures: Five (5) years.</i></p> <p><i>In case of other structures, such as bailey and wooden bridges, shallow wells, spring developments, and other similar structures: Two (2) years.</i></p>
10	<p><i>Dayworks:</i></p> <p style="padding-left: 40px;"><i>a. No dayworks are applicable to the contract.</i></p>
11.1	<i>The Contractor shall submit the Program of Work to the Procuring Entity's Representative within 15 days of delivery of the Notice of Award.</i>
11.2	<i>The amount to be withheld for late submission of an updated Program of Work is 1% of Contract Amount.</i>
13	<i>The amount of the advance payment is 15% of the Contract amount</i>
14	<i>Materials and equipment delivered on the site but not completely put in place shall be included for payment.</i>
15.1	<p><i>The date by which operating and maintenance manuals are required is 15 days upon issuance of COC</i></p> <p><i>The date by which "as built" drawings are required is within 15 days upon issuance of Certificate of Completion.</i></p>
15.2	<i>The amount to be withheld for failing to produce "as built" drawings and/or operating and maintenance manuals by the date required is 5% of the Contract Amount.</i>

## ***Section VI. Specifications***

## **Notes on Specifications**

A set of precise and clear specifications is a prerequisite for Bidders to respond realistically and competitively to the requirements of the Procuring Entity without qualifying or conditioning their Bids. In the context of international competitive bidding, the specifications must be drafted to permit the widest possible competition and, at the same time, present a clear statement of the required standards of workmanship, materials, and performance of the goods and services to be procured. Only if this is done will the objectives of economy, efficiency, and fairness in procurement be realized, responsiveness of Bids be ensured, and the subsequent task of bid evaluation facilitated. The specifications should require that all goods and materials to be incorporated in the Works be new, unused, of the most recent or current models, and incorporate all recent improvements in design and materials unless provided otherwise in the Contract.

Samples of specifications from previous similar projects are useful in this respect. The use of metric units is mandatory. Most specifications are normally written specially by the Procuring Entity or its representative to suit the Works at hand. There is no standard set of Specifications for universal application in all sectors in all regions, but there are established principles and practices, which are reflected in these PBDs.

There are considerable advantages in standardizing General Specifications for repetitive Works in recognized public sectors, such as highways, ports, railways, urban housing, irrigation, and water supply, in the same country or region where similar conditions prevail. The General Specifications should cover all classes of workmanship, materials, and equipment commonly involved in construction, although not necessarily to be used in a particular Works Contract. Deletions or addenda should then adapt the General Specifications to the particular Works.

Care must be taken in drafting specifications to ensure that they are not restrictive. In the specification of standards for goods, materials, and workmanship, recognized international standards should be used as much as possible. Where other particular standards are used, whether national standards or other standards, the specifications should state that goods, materials, and workmanship that meet other authoritative standards, and which ensure substantially equal or higher quality than the standards mentioned, will also be acceptable. The following clause may be inserted in the SCC.

### **Sample Clause: Equivalency of Standards and Codes**

Wherever reference is made in the Contract to specific standards and codes to be met by the goods and materials to be furnished, and work performed or tested, the provisions of the latest current edition or revision of the relevant standards and codes in effect shall apply, unless otherwise expressly stated in the Contract. Where such standards and codes are national, or relate to a particular country or region, other authoritative standards that ensure a substantially equal or higher quality than the standards and codes specified will be accepted subject to the Procuring Entity's Representative's prior review and written consent. Differences between the standards specified and the proposed alternative standards shall be fully described in writing by the Contractor and submitted to the Procuring Entity's Representative at least twenty-eight (28) days prior to the date when the Contractor desires the Procuring Entity's Representative's consent. In the event the Procuring Entity's Representative determines that such proposed deviations do not ensure substantially equal or higher quality, the Contractor shall comply with the standards specified in the documents.

These notes are intended only as information for the Procuring Entity or the person drafting the Bidding Documents. They should not be included in the final Bidding Documents.

## ***Section VII. Drawings***

BAUKO CS

PREPARED BY:  
**CHARLES K. TAYAMAN**  
 DEPRD PROJECT ARCHITECT III

CHECKED BY:  
**CHRISTOPHER S. HADJIAN**  
 ENGINEER III

RECOMMENDING APPROVAL:  
**EDGAR H. MADLAMIG**  
 CHIEF ESSD

APPROVED BY:  
**ESTELA L. CAMERO EMB, CESO III**  
 REGIONAL DIRECTOR/DIRECTOR IV

PROJECT TITLE:  
**RESTORATION OF  
 HERITAGE GABALDON  
 BUILDING**

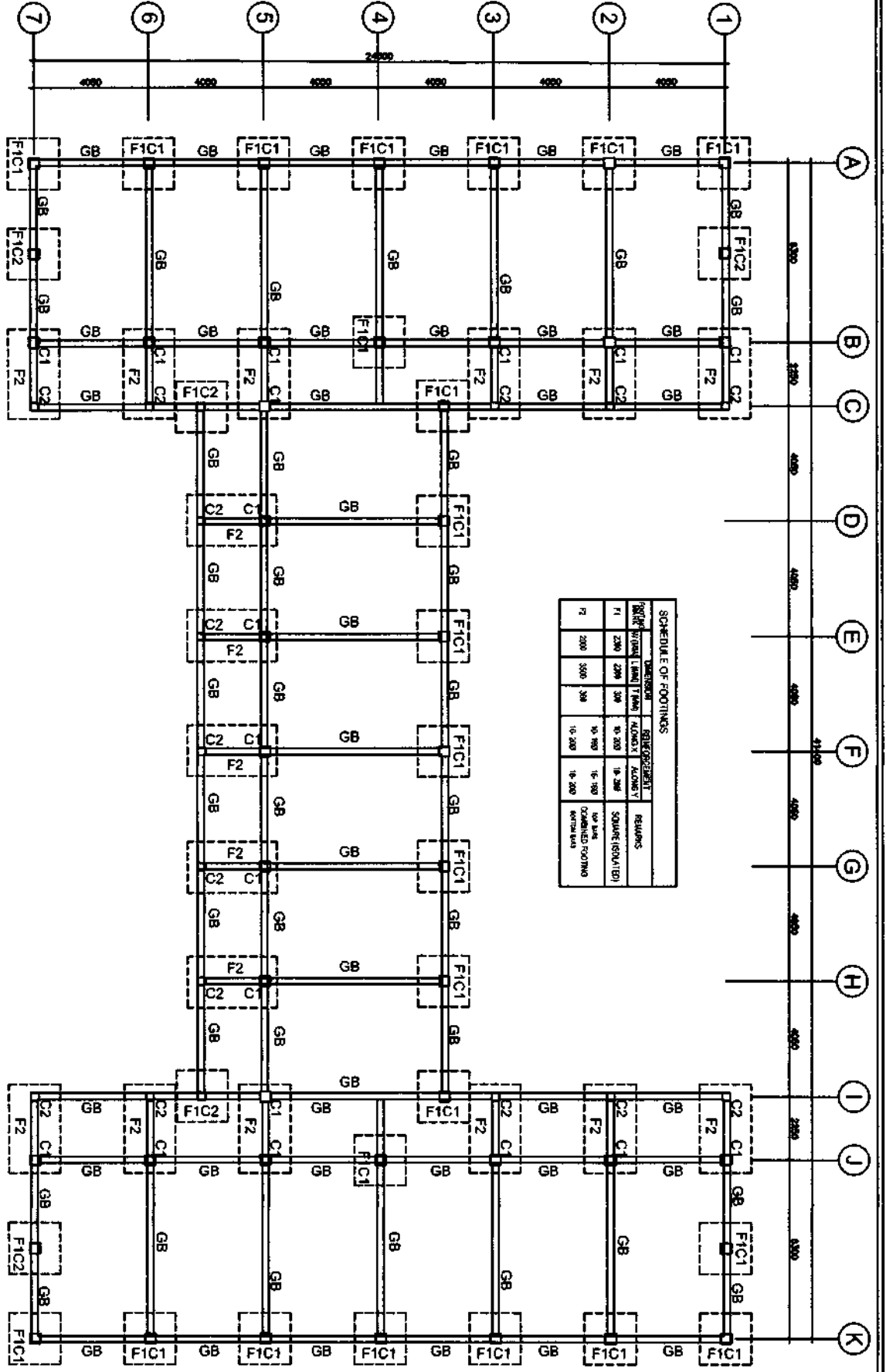
OWNER:  
**DEPARTMENT OF EDUCATION-  
 CAR REGIONAL OFFICE**

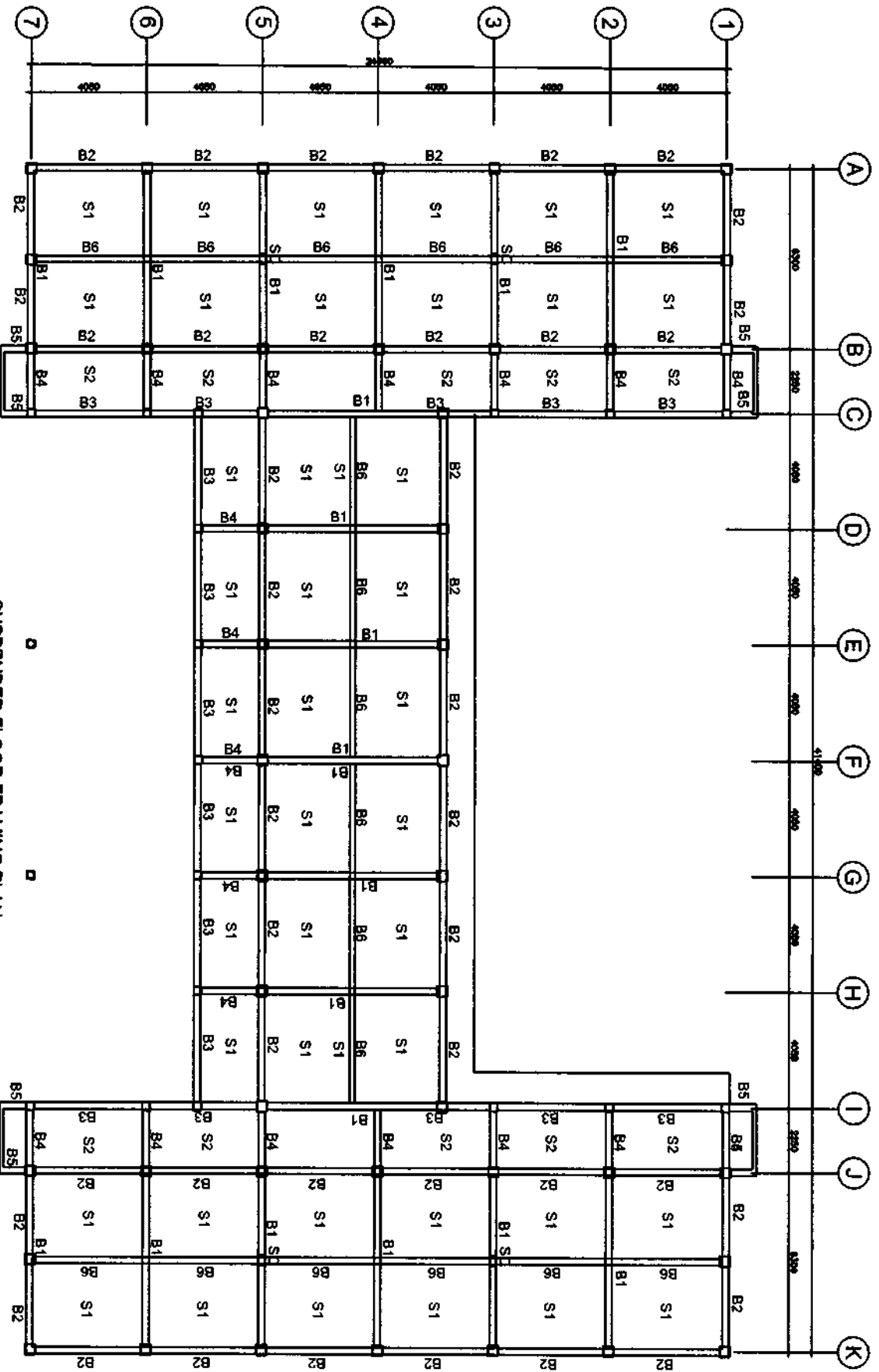
SHEET CONTENT:  
**FOUNDATION PLAN**

SHEET NO.:  
**S1**  
**5**

SCALE: 1:100M

**FOUNDATION PLAN**





SUSPENDED FLOOR FRAMING PLAN  
SCALE 1:100M

PREPARED BY: CHECKED BY: RECOMMENDING APPROVAL: APPROVED BY: PROJECT TITLE: OWNER: SHEET NO.:



REPUBLIC OF THE PHILIPPINES  
DEPARTMENT OF EDUCATION  
EDUCATION FACILITIES SECTION  
MANILA, LA TRINIDAD, BENGUET

CHARLES K. TAYARAN  
DEPT PROJECT ARCHITECT III

CHRISTOPHER B. MADRAN  
ENGINEER III

EDGAR W. MARLINGS  
CHIEF ENGR

ESTELA L. CARINO ESP. CESO III  
REGIONAL DIRECTOR/DIRECTOR IV

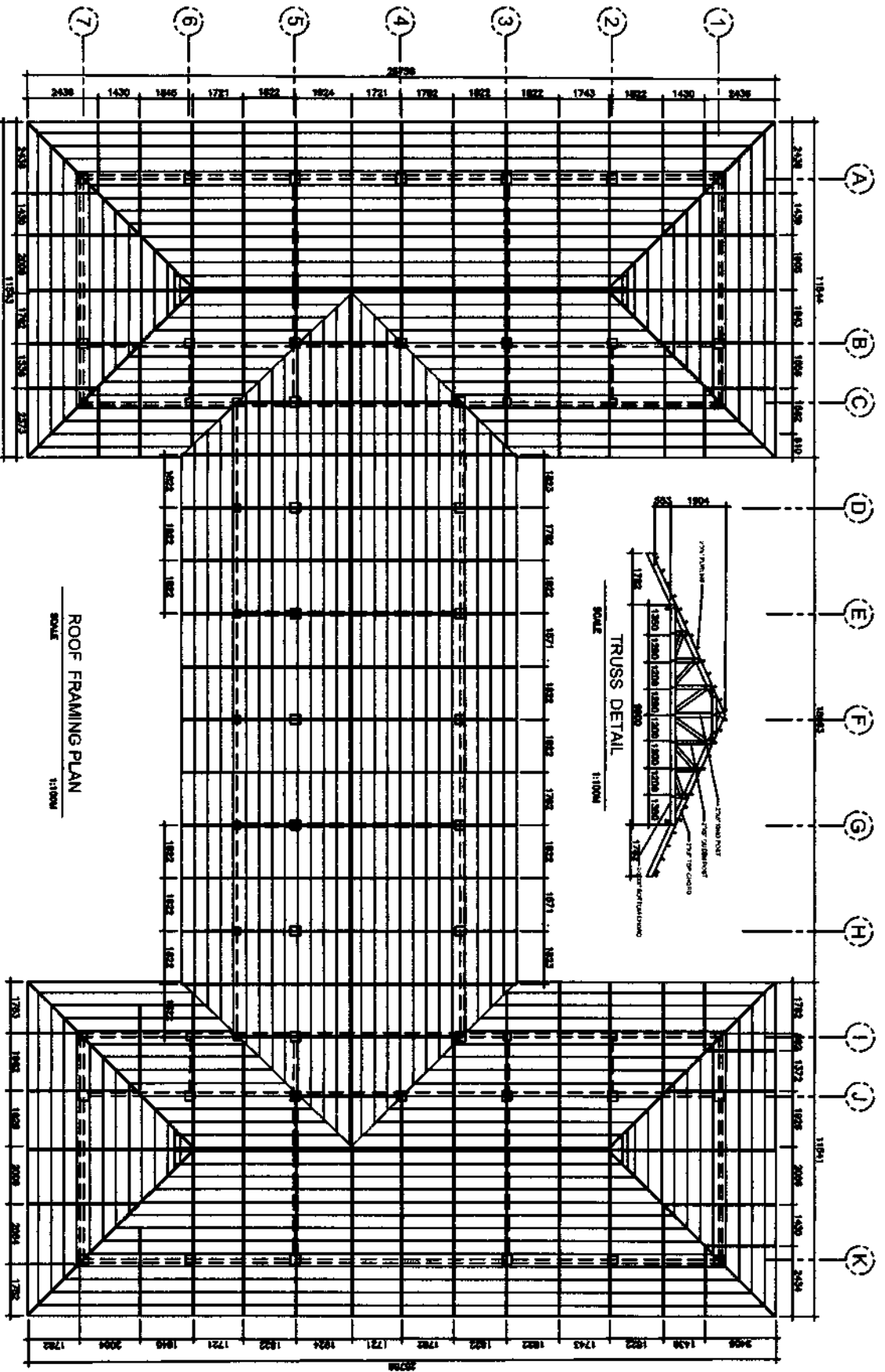
LOCATION: BAYLAKO CS, BAYLAKO MOUNTAIN PROVINCE

RESTORATION OF  
HERITAGE GABALDON  
BUILDING

DEPARTMENT OF EDUCATION  
CAR REGIONAL OFFICE  
SUSPENDED FLOOR FRAMING PLAN







ROOF FRAMING PLAN  
SCALE 1:1000

TRUSS DETAIL  
SCALE 1:1000

PREPARED BY: **CHARLES K. TAYAMAN**  
DEPTD PROJECT ARCHITECT III

CHECKED BY: **CHRISTOPHER B. NAOSAM**  
ENGINEER III

RECOMMENDING APPROVAL: **EDGAR W. MARILINO**  
CHIEF ESSD

APPROVED BY: **ESTELA L. CARINO ESP. CESO III**  
REGIONAL DIRECTOR/DIRECTOR IV

PROJECT TITLE:  
**RESTORATION OF  
HERITAGE GABALDON  
BUILDING**

OWNER: **DEPARTMENT OF EDUCATION-  
CAR REGIONAL OFFICE**  
SHEET CONTENT:  
**ROOF FRAMING PLAN**

PREPARED BY:  
**CHARLES K. TAYASAN**  
 DEPTD PROJECT ARCHITECT III

CHECKED BY:  
**CHRISTOPHER B. HADSAM**  
 ENGINEER III

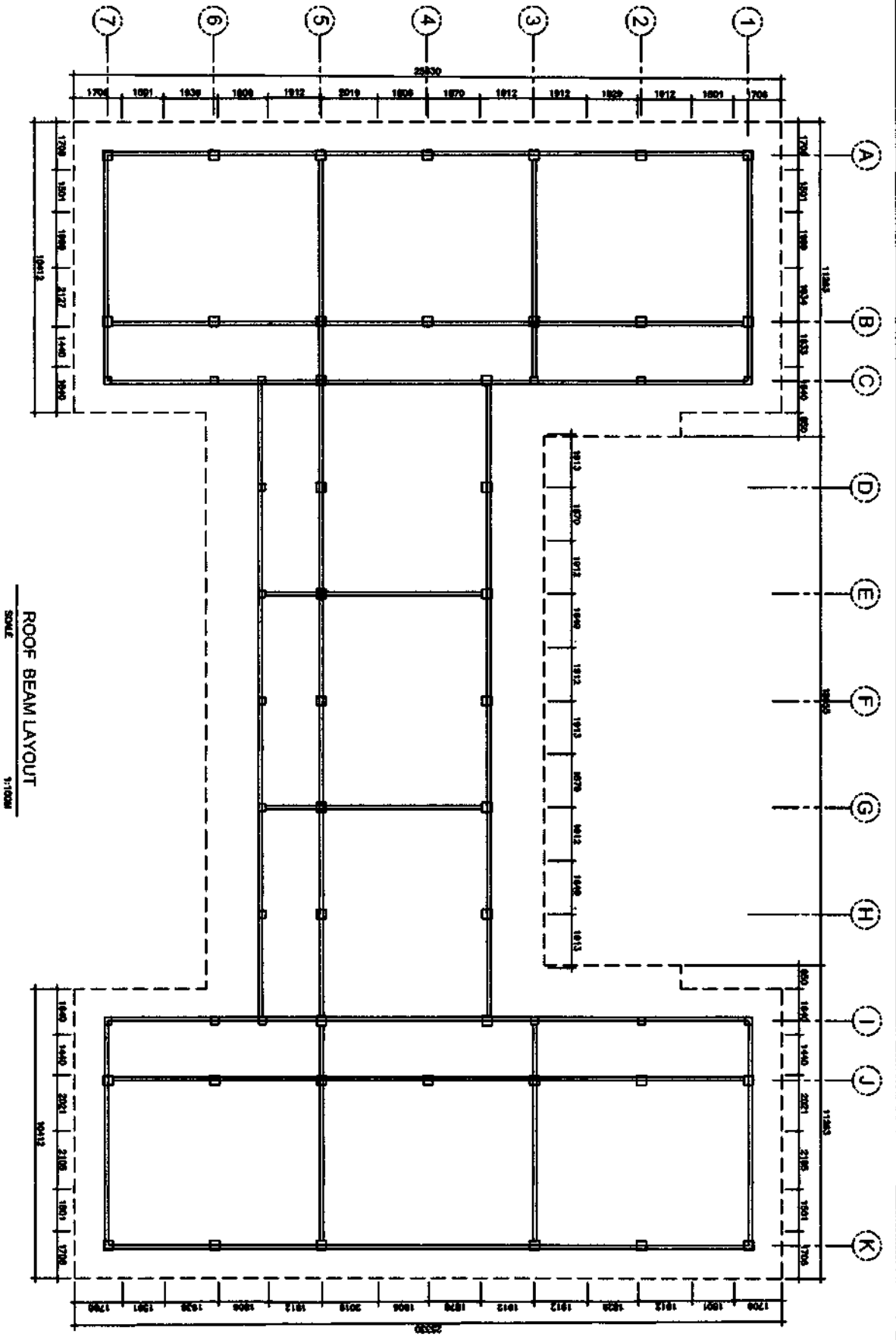
RECOMMENDING APPROVAL:  
**EDGAR N. MADRANO**  
 CHIEF, ESSD

APPROVED BY:  
**ESTELA L. GARRIDO SAN, CESO III**  
 REGIONAL DIRECTOR/DIRECTOR IV

PROJECT TITLE:  
**RESTORATION OF  
 HERITAGE CABALDON  
 BUILDING**

OWNER:  
**DEPARTMENT OF EDUCATION,  
 CAR REGIONAL OFFICE**

SHEET NO.:  
**S5**





PREPARED BY:  
**CHARLES K. TAYASAN**  
 DEPED PROJECT ARCHITECT III

CHECKED BY:  
**CHRISTOPHER S. HANSON**  
 ENGINEER III

RECOMMENDING APPROVAL:  
**EDGAN H. MADRANG**  
 CHIEF BSSD

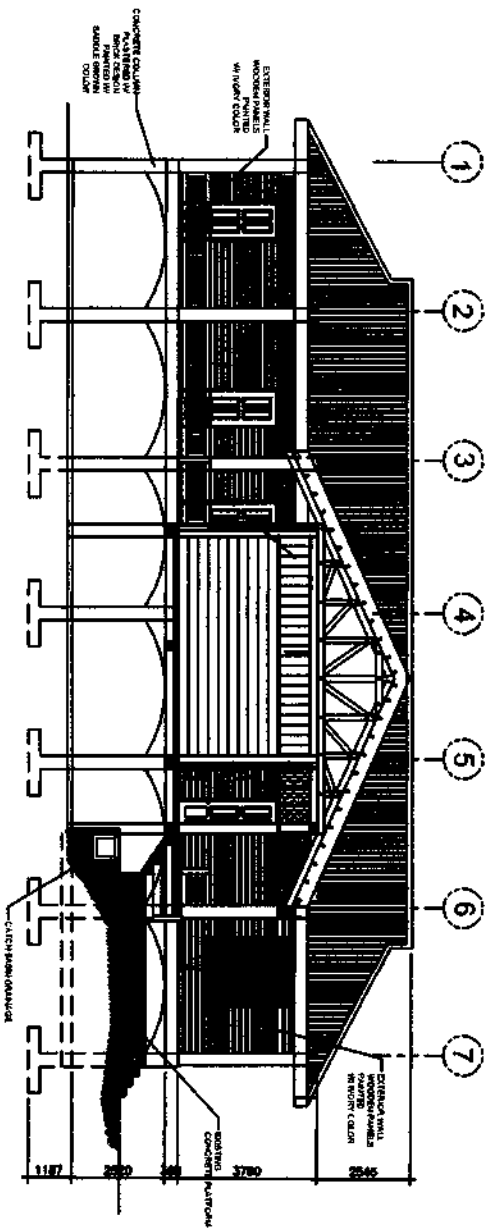
APPROVED BY:  
**ESTELA L. CARRIÑO SAN CESO III**  
 REGIONAL DIRECTOR/DIRECTOR IV

PROJECT TITLE:  
**RESTORATION OF  
 HERITAGE GABALDON  
 BUILDING**

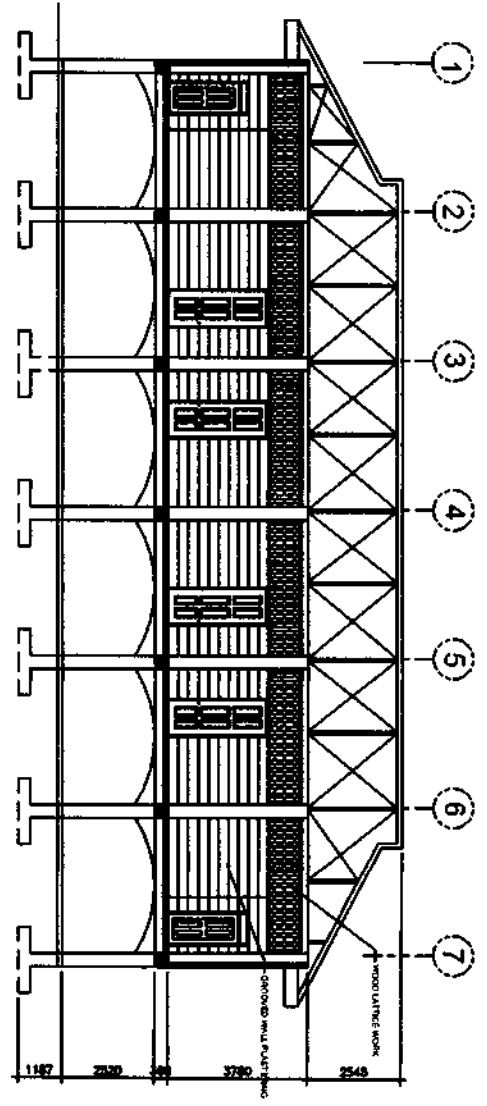
OWNER:  
**DEPARTMENT OF EDUCATION  
 CAR REGIONAL OFFICE**

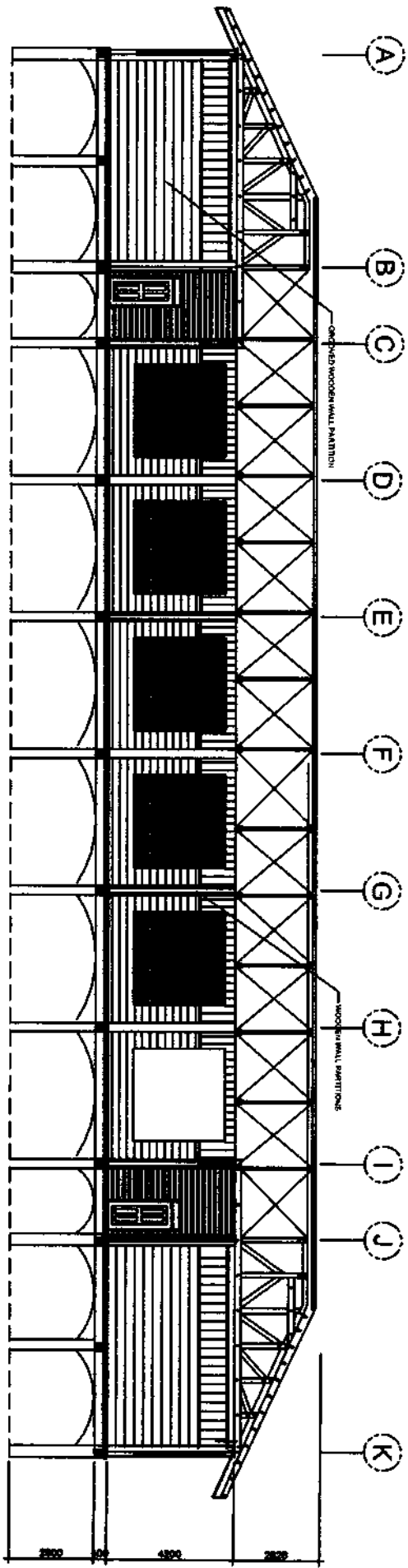
SHEET NO.:  
**6**

SECTION B-B  
 SCALE 1:100MM



SECTION A-A  
 SCALE 1:100MM





SECTION C-C  
SCALE 1:100M

REPUBLIC OF THE PHILIPPINES <b>DepEd</b> DEPARTMENT OF EDUCATION EDUCATION FACILITIES SECTION MANILA, LA TRINIDAD, BANGALIST		PREPARED BY: <b>CHARLES K. ZAYAMAN</b> DEPED PROJECT ARCHITECT III	CHECKED BY: <b>CHRISTOPHER S. MADRAN</b> ENGINEER III	RECOMMENDING APPROVAL: <b>EDGAR H. MADRANO</b> CHIEF ESSD	APPROVED BY: <b>ESTELA L. CAMINO EMB, CERO III</b> REGIONAL DIRECTOR/DIRECTOR IV	PROJECT TITLE: <b>RESTORATION OF HERITAGE GABALDON BUILDING</b> LOCATION: BALIKO OS, BALIKO MOUNTAIN PROVINCE	OWNER: <b>DEPARTMENT OF EDUCATION- CAR REGIONAL OFFICE</b> SHEET CONTENT: SECTIONS	SHEET NO.: <b>A3</b> <b>6</b>
--	--	--	---	---	--	--	---	-------------------------------------

PREPARED BY:  
**CHARLES K. TAYASAN**  
 DEPED PROJECT ARCHITECT III

CHECKED BY:  
**CHRISTOPHER S. MADRAN**  
 ENGINEER III

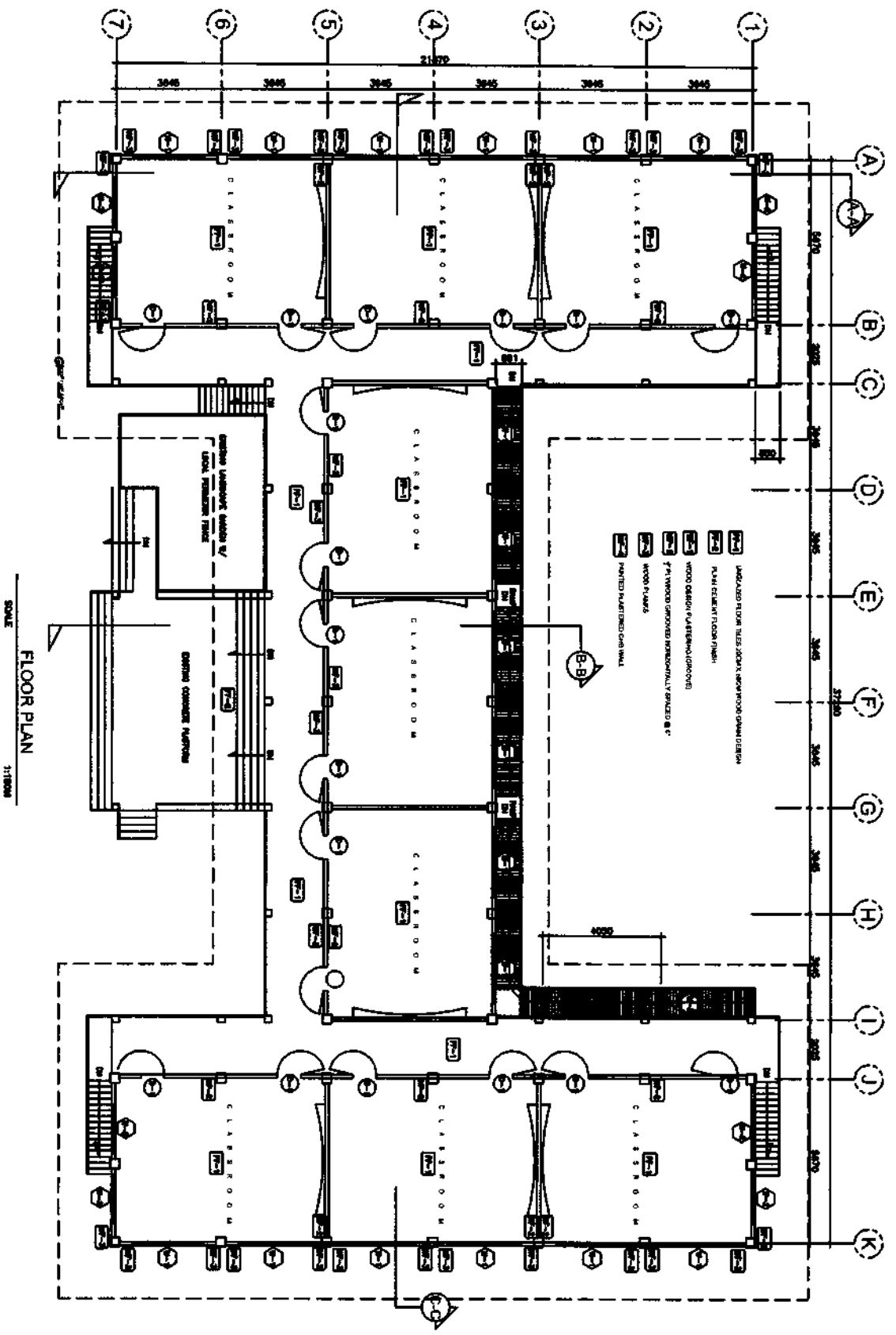
RECOMMENDING APPROVAL:  
**EDGAR H. MADRINE**  
 CHIEF-ESSD

APPROVED BY:  
**ESTELA L. CARRIO ESP. GERO M.**  
 REGIONAL DIRECTOR/DIRECTOR IV

PROJECT TITLE:  
**RESTORATION OF HERITAGE GABALDON BUILDING**  
 LOCATION:  
 BALUAGO CS, BALUAGO MOUNTAIN PROVINCE

OWNER:  
**DEPARTMENT OF EDUCATION, CAR REGIONAL OFFICE**  
 SHEET CONTENT:  
**FLOOR PLAN**

SHEET NO.:  
**A/4**  
**6**



PREPARED BY:  
**CHARLES K. TAYARAN**  
 DEPED PROJECT ARCHITECT III

CHECKED BY:  
**CHRISTOPHER E. MADRAN**  
 ENGINEER III

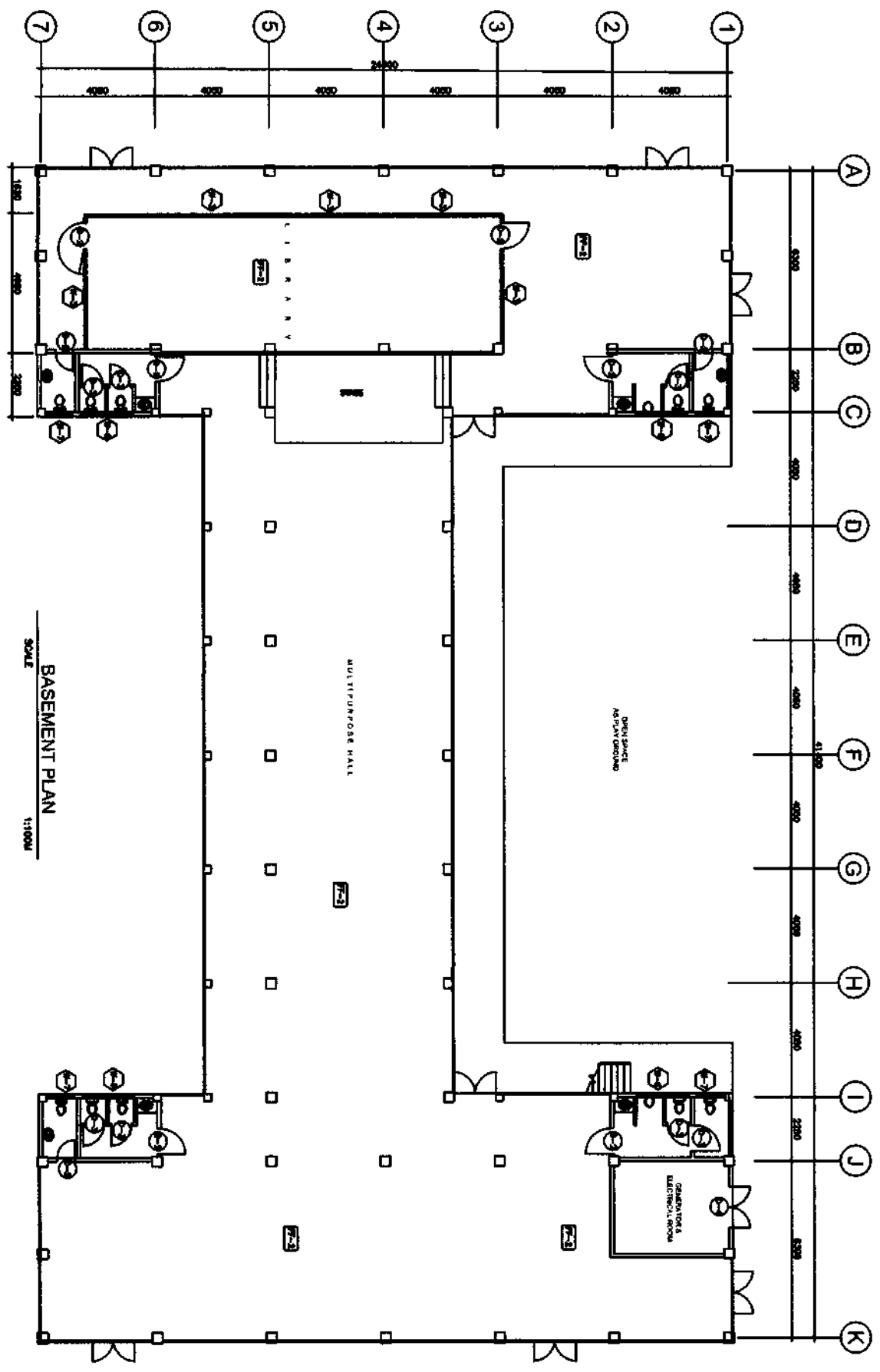
RECOMMENDING APPROVAL:  
**EDGAR M. MANANLIC**  
 CHIEF, ESSD

APPROVED BY:  
**ESTELA L. CAMERO SGO, CESO III**  
 REGIONAL DIRECTOR/DIRECTOR IV

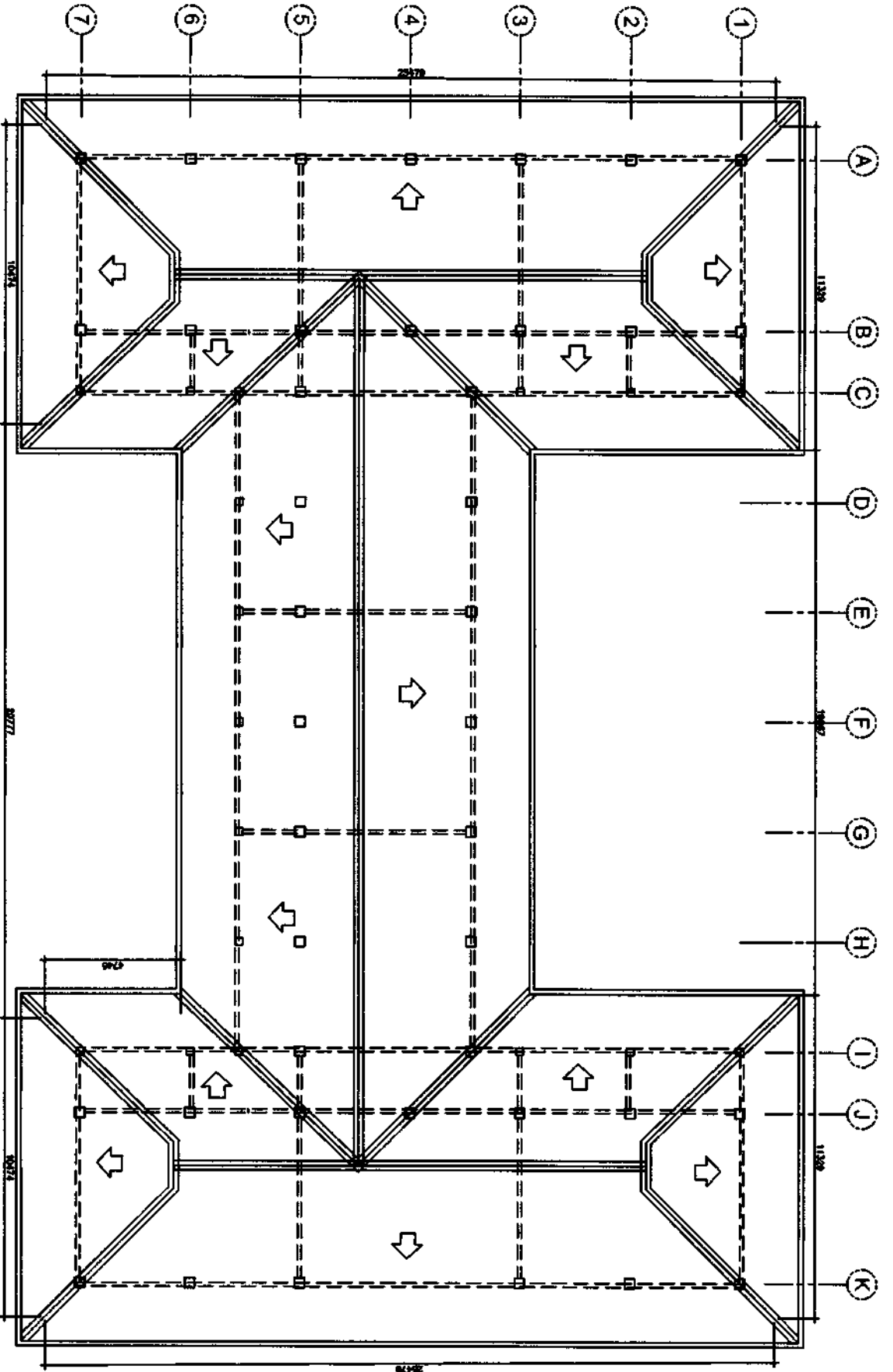
PROJECT TITLE:  
**RESTORATION OF  
 HERITAGE GABALDON  
 BUILDING**

OWNER:  
**DEPARTMENT OF EDUCATION -  
 CAR REGIONAL OFFICE**

SHEET NO.:  
**A5  
 6**







SCALE 1:1000  
ROOF PLAN

REPUBLIC OF THE PHILIPPINES  
 DEPARTMENT OF EDUCATION  
 EDUCATION FACILITIES SECTION  
 MANILA, A TRINIDAD, PHILIPPINES



DEPARTMENT OF EDUCATION  
 EDUCATION FACILITIES SECTION  
 MANILA, A TRINIDAD, PHILIPPINES

PREPARED BY: <b>CHARLES K. TAYARAN</b> DEED PROJECT ARCHITECT III	CHECKED BY: <b>CHRISTOPHER B. HADRAN</b> ENGINEER III	RECOMMENDING APPROVAL: <b>EDGAR H. MADRANG</b> CHIEF, FESD	APPROVED BY: <b>ESTELA L. GABRINO PhD, CESO III</b> REGIONAL DIRECTOR/DIRECTOR IV	PROJECT TITLE: <b>RESTORATION OF HERITAGE GABALDON BUILDING</b>	OWNER: <b>DEPARTMENT OF EDUCATION - CAR REGIONAL OFFICE</b>	SHEET NO.:
LOCATION: <b>BAJOKO CS, BAJOKO MOUNTAIN PROVINCE</b>				SHEET CONTENT: <b>ROOF PLAN</b>		<b>A/6</b> <b>6</b>

PANEL LOAD SCHEDULE

OUT. NO.	LOAD DESCRIPTION	W	MO	TU	WE	TH	FR	SAT	SUN	CHARGE
<b>PANEL 1</b>										
1	6-250 LIGHTING OUTLET	600	250	2,16	15	30	2	2-Subpanel		20
2	7-250 LIGHTING OUTLET	700	250	2,16	15	30	2	2-Subpanel		20
3	8-250 LIGHTING OUTLET	800	250	2,16	15	30	2	2-Subpanel		20
4	7-250 LIGHTING OUTLET	700	250	2,16	15	30	2	2-Subpanel		20
5	6-250 LIGHTING OUTLET	600	250	2,16	15	30	2	2-Subpanel		20
6	6-COMMERCIAL OUTLET	1000	250	4,86	15	30	2	2-Subpanel		20
7	6-COMMERCIAL OUTLET	1000	250	4,86	15	30	2	2-Subpanel		20
8	6-COMMERCIAL OUTLET	1000	250	4,86	15	30	2	2-Subpanel		20
9	6-COMMERCIAL OUTLET	1000	250	4,86	15	30	2	2-Subpanel		20
10	6-COMMERCIAL OUTLET	1000	250	4,86	15	30	2	2-Subpanel		20
<b>PANEL 2</b>										
1	6-250 LIGHTING OUTLET	600	250	2,16	15	30	2	2-Subpanel		20
2	7-250 LIGHTING OUTLET	700	250	2,16	15	30	2	2-Subpanel		20
3	8-250 LIGHTING OUTLET	800	250	2,16	15	30	2	2-Subpanel		20
4	7-250 LIGHTING OUTLET	700	250	2,16	15	30	2	2-Subpanel		20
5	7-250 LIGHTING OUTLET	700	250	2,16	15	30	2	2-Subpanel		20
6	6-COMMERCIAL OUTLET	1000	250	4,86	15	30	2	2-Subpanel		20
7	6-COMMERCIAL OUTLET	1000	250	4,86	15	30	2	2-Subpanel		20
8	6-COMMERCIAL OUTLET	1000	250	4,86	15	30	2	2-Subpanel		20
9	6-COMMERCIAL OUTLET	1000	250	4,86	15	30	2	2-Subpanel		20
10	6-COMMERCIAL OUTLET	1000	250	4,86	15	30	2	2-Subpanel		20
<b>PANEL 3</b>										
1	7-250 LIGHTING OUTLET	700	250	2,16	15	30	2	2-Subpanel		20
2	7-250 LIGHTING OUTLET	700	250	2,16	15	30	2	2-Subpanel		20
3	7-250 LIGHTING OUTLET	700	250	2,16	15	30	2	2-Subpanel		20
4	7-250 LIGHTING OUTLET	700	250	2,16	15	30	2	2-Subpanel		20
5	6-COMMERCIAL OUTLET	1000	250	4,86	15	30	2	2-Subpanel		20
6	6-COMMERCIAL OUTLET	1000	250	4,86	15	30	2	2-Subpanel		20
7	6-COMMERCIAL OUTLET	1000	250	4,86	15	30	2	2-Subpanel		20
8	6-COMMERCIAL OUTLET	1000	250	4,86	15	30	2	2-Subpanel		20
9	6-COMMERCIAL OUTLET	1000	250	4,86	15	30	2	2-Subpanel		20
10	6-COMMERCIAL OUTLET	1000	250	4,86	15	30	2	2-Subpanel		20
<b>PANEL 4</b>										
1	7-250 LIGHTING OUTLET	700	250	2,16	15	30	2	2-Subpanel		20
2	6-250 LIGHTING OUTLET	600	250	2,16	15	30	2	2-Subpanel		20
3	6-250 LIGHTING OUTLET	600	250	2,16	15	30	2	2-Subpanel		20
4	7-250 LIGHTING OUTLET	700	250	2,16	15	30	2	2-Subpanel		20
5	4-COMMERCIAL OUTLET	600	250	2,16	15	30	2	2-Subpanel		20
6	6-COMMERCIAL OUTLET	1000	250	4,86	15	30	2	2-Subpanel		20
7	6-COMMERCIAL OUTLET	1000	250	4,86	15	30	2	2-Subpanel		20
8	6-COMMERCIAL OUTLET	1000	250	4,86	15	30	2	2-Subpanel		20
9	6-COMMERCIAL OUTLET	1000	250	4,86	15	30	2	2-Subpanel		20
10	6-COMMERCIAL OUTLET	1000	250	4,86	15	30	2	2-Subpanel		20
TOTAL		6000	2500	18	90	180	8	2-Subpanel	1-4-Subpanel	80

COMPARISON: 1 - 100% - 100% - 100% - 100% - 100% - 100% - 100% - 100% - 100% - 100%  
 REVISIONS: 1 - 100% - 100% - 100% - 100% - 100% - 100% - 100% - 100% - 100% - 100%

PREPARED BY: **CHARLES K. TAYARAN**  
 DEED PROJECT ARCHITECT III

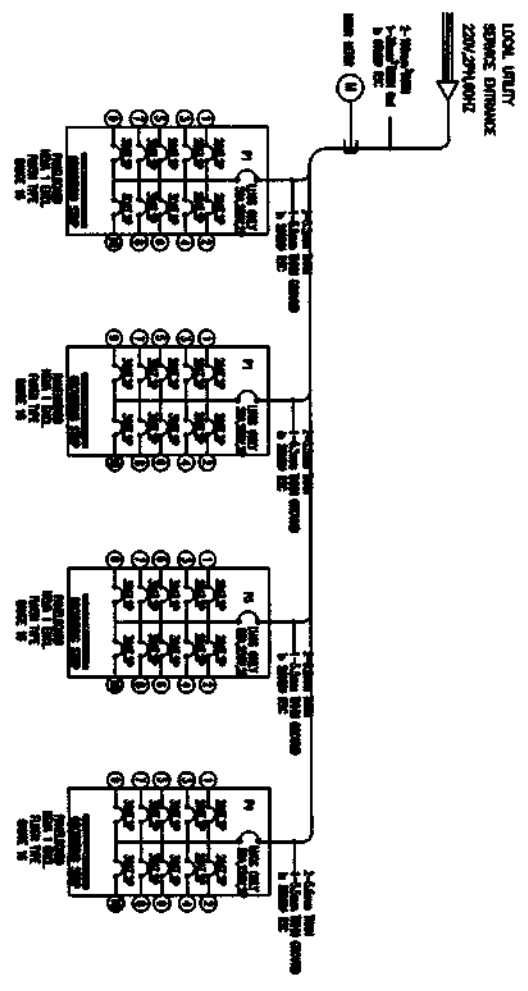
CHECKED BY: **CHRISTOPHER B. HADSAN**  
 ENGINEER III

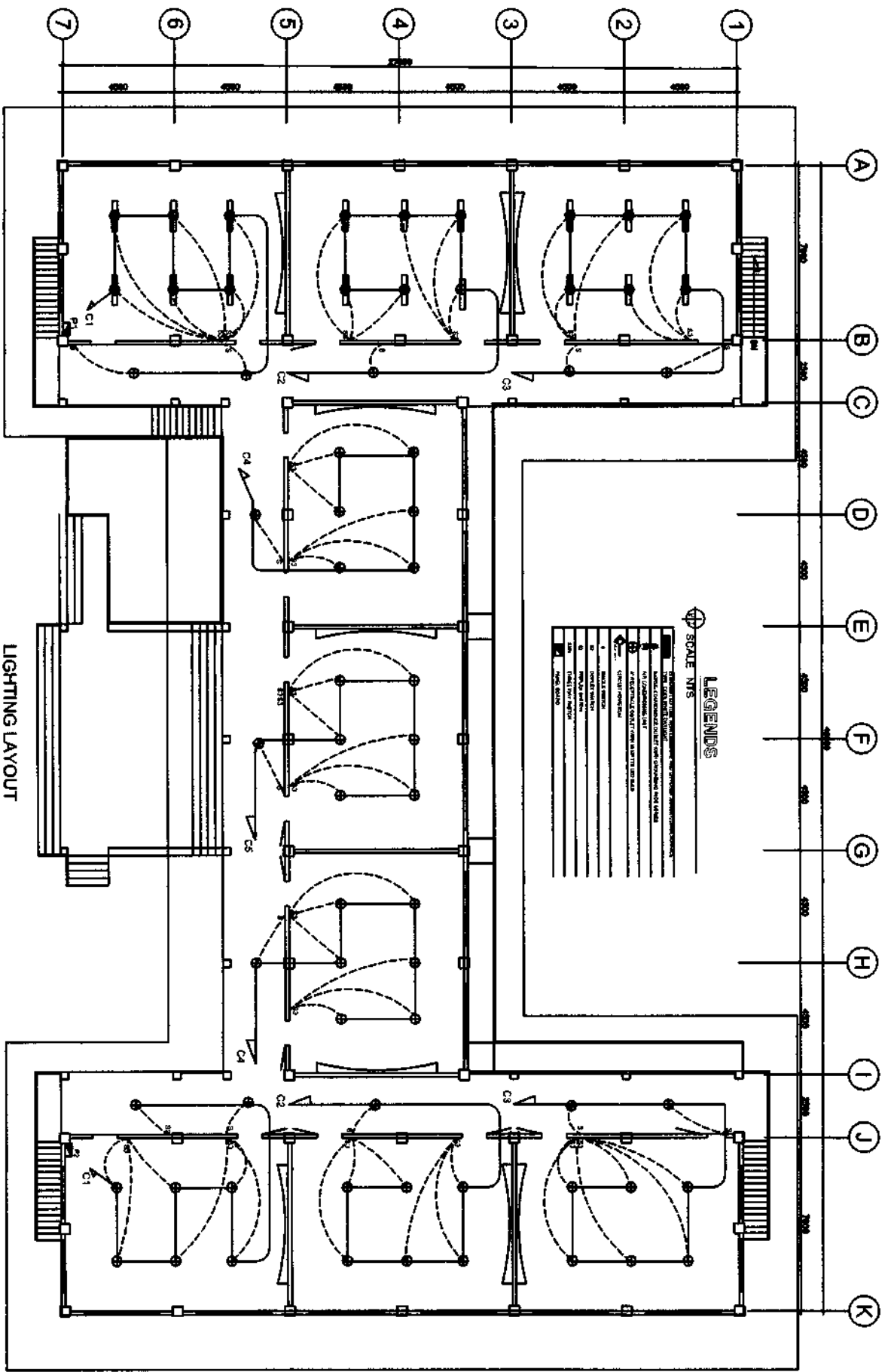
RECOMMENDING APPROVAL: **EDGAR H. MADRANG**  
 CHIEF, FASH

APPROVED BY: **ESTELA L. CARRIO FAD, CESO III**  
 REGIONAL DIRECTOR/DIRECTOR IV

PROJECT TITLE: **RESTORATION OF HERITAGE GABALDON BUILDING**  
 LOCATION: **BAJINGO CQ, BAJINGO MOUNTAIN PROVINCE**

OWNER: **DEPARTMENT OF EDUCATION - CAR REGIONAL OFFICE**  
 SHEET CONTENT: **LOAD SCHEDULE**





**LEGENDS**

SCALE: NTS

1	RECESSED DOWNLIGHT
2	RECESSED TRACK LIGHT
3	RECESSED TRACK LIGHT (WITH BALLAST DIM SW)
4	RECESSED TRACK LIGHT (WITH BALLAST DIM SW)
5	RECESSED TRACK LIGHT (WITH BALLAST DIM SW)
6	RECESSED TRACK LIGHT (WITH BALLAST DIM SW)
7	RECESSED TRACK LIGHT (WITH BALLAST DIM SW)
8	RECESSED TRACK LIGHT (WITH BALLAST DIM SW)
9	RECESSED TRACK LIGHT (WITH BALLAST DIM SW)
10	RECESSED TRACK LIGHT (WITH BALLAST DIM SW)
11	RECESSED TRACK LIGHT (WITH BALLAST DIM SW)
12	RECESSED TRACK LIGHT (WITH BALLAST DIM SW)
13	RECESSED TRACK LIGHT (WITH BALLAST DIM SW)
14	RECESSED TRACK LIGHT (WITH BALLAST DIM SW)
15	RECESSED TRACK LIGHT (WITH BALLAST DIM SW)
16	RECESSED TRACK LIGHT (WITH BALLAST DIM SW)
17	RECESSED TRACK LIGHT (WITH BALLAST DIM SW)
18	RECESSED TRACK LIGHT (WITH BALLAST DIM SW)
19	RECESSED TRACK LIGHT (WITH BALLAST DIM SW)
20	RECESSED TRACK LIGHT (WITH BALLAST DIM SW)
21	RECESSED TRACK LIGHT (WITH BALLAST DIM SW)
22	RECESSED TRACK LIGHT (WITH BALLAST DIM SW)
23	RECESSED TRACK LIGHT (WITH BALLAST DIM SW)
24	RECESSED TRACK LIGHT (WITH BALLAST DIM SW)
25	RECESSED TRACK LIGHT (WITH BALLAST DIM SW)
26	RECESSED TRACK LIGHT (WITH BALLAST DIM SW)
27	RECESSED TRACK LIGHT (WITH BALLAST DIM SW)
28	RECESSED TRACK LIGHT (WITH BALLAST DIM SW)
29	RECESSED TRACK LIGHT (WITH BALLAST DIM SW)
30	RECESSED TRACK LIGHT (WITH BALLAST DIM SW)
31	RECESSED TRACK LIGHT (WITH BALLAST DIM SW)
32	RECESSED TRACK LIGHT (WITH BALLAST DIM SW)
33	RECESSED TRACK LIGHT (WITH BALLAST DIM SW)
34	RECESSED TRACK LIGHT (WITH BALLAST DIM SW)
35	RECESSED TRACK LIGHT (WITH BALLAST DIM SW)
36	RECESSED TRACK LIGHT (WITH BALLAST DIM SW)
37	RECESSED TRACK LIGHT (WITH BALLAST DIM SW)
38	RECESSED TRACK LIGHT (WITH BALLAST DIM SW)
39	RECESSED TRACK LIGHT (WITH BALLAST DIM SW)
40	RECESSED TRACK LIGHT (WITH BALLAST DIM SW)
41	RECESSED TRACK LIGHT (WITH BALLAST DIM SW)
42	RECESSED TRACK LIGHT (WITH BALLAST DIM SW)
43	RECESSED TRACK LIGHT (WITH BALLAST DIM SW)
44	RECESSED TRACK LIGHT (WITH BALLAST DIM SW)
45	RECESSED TRACK LIGHT (WITH BALLAST DIM SW)
46	RECESSED TRACK LIGHT (WITH BALLAST DIM SW)
47	RECESSED TRACK LIGHT (WITH BALLAST DIM SW)
48	RECESSED TRACK LIGHT (WITH BALLAST DIM SW)
49	RECESSED TRACK LIGHT (WITH BALLAST DIM SW)
50	RECESSED TRACK LIGHT (WITH BALLAST DIM SW)
51	RECESSED TRACK LIGHT (WITH BALLAST DIM SW)
52	RECESSED TRACK LIGHT (WITH BALLAST DIM SW)
53	RECESSED TRACK LIGHT (WITH BALLAST DIM SW)
54	RECESSED TRACK LIGHT (WITH BALLAST DIM SW)
55	RECESSED TRACK LIGHT (WITH BALLAST DIM SW)
56	RECESSED TRACK LIGHT (WITH BALLAST DIM SW)
57	RECESSED TRACK LIGHT (WITH BALLAST DIM SW)
58	RECESSED TRACK LIGHT (WITH BALLAST DIM SW)
59	RECESSED TRACK LIGHT (WITH BALLAST DIM SW)
60	RECESSED TRACK LIGHT (WITH BALLAST DIM SW)
61	RECESSED TRACK LIGHT (WITH BALLAST DIM SW)
62	RECESSED TRACK LIGHT (WITH BALLAST DIM SW)
63	RECESSED TRACK LIGHT (WITH BALLAST DIM SW)
64	RECESSED TRACK LIGHT (WITH BALLAST DIM SW)
65	RECESSED TRACK LIGHT (WITH BALLAST DIM SW)
66	RECESSED TRACK LIGHT (WITH BALLAST DIM SW)
67	RECESSED TRACK LIGHT (WITH BALLAST DIM SW)
68	RECESSED TRACK LIGHT (WITH BALLAST DIM SW)
69	RECESSED TRACK LIGHT (WITH BALLAST DIM SW)
70	RECESSED TRACK LIGHT (WITH BALLAST DIM SW)
71	RECESSED TRACK LIGHT (WITH BALLAST DIM SW)
72	RECESSED TRACK LIGHT (WITH BALLAST DIM SW)
73	RECESSED TRACK LIGHT (WITH BALLAST DIM SW)
74	RECESSED TRACK LIGHT (WITH BALLAST DIM SW)
75	RECESSED TRACK LIGHT (WITH BALLAST DIM SW)
76	RECESSED TRACK LIGHT (WITH BALLAST DIM SW)
77	RECESSED TRACK LIGHT (WITH BALLAST DIM SW)
78	RECESSED TRACK LIGHT (WITH BALLAST DIM SW)
79	RECESSED TRACK LIGHT (WITH BALLAST DIM SW)
80	RECESSED TRACK LIGHT (WITH BALLAST DIM SW)
81	RECESSED TRACK LIGHT (WITH BALLAST DIM SW)
82	RECESSED TRACK LIGHT (WITH BALLAST DIM SW)
83	RECESSED TRACK LIGHT (WITH BALLAST DIM SW)
84	RECESSED TRACK LIGHT (WITH BALLAST DIM SW)
85	RECESSED TRACK LIGHT (WITH BALLAST DIM SW)
86	RECESSED TRACK LIGHT (WITH BALLAST DIM SW)
87	RECESSED TRACK LIGHT (WITH BALLAST DIM SW)
88	RECESSED TRACK LIGHT (WITH BALLAST DIM SW)
89	RECESSED TRACK LIGHT (WITH BALLAST DIM SW)
90	RECESSED TRACK LIGHT (WITH BALLAST DIM SW)
91	RECESSED TRACK LIGHT (WITH BALLAST DIM SW)
92	RECESSED TRACK LIGHT (WITH BALLAST DIM SW)
93	RECESSED TRACK LIGHT (WITH BALLAST DIM SW)
94	RECESSED TRACK LIGHT (WITH BALLAST DIM SW)
95	RECESSED TRACK LIGHT (WITH BALLAST DIM SW)
96	RECESSED TRACK LIGHT (WITH BALLAST DIM SW)
97	RECESSED TRACK LIGHT (WITH BALLAST DIM SW)
98	RECESSED TRACK LIGHT (WITH BALLAST DIM SW)
99	RECESSED TRACK LIGHT (WITH BALLAST DIM SW)
100	RECESSED TRACK LIGHT (WITH BALLAST DIM SW)

**LIGHTING LAYOUT**

SCALE: 1:1000

PREPARED BY: \_\_\_\_\_ CHECKED BY: \_\_\_\_\_ RECOMMENDING APPROVAL: \_\_\_\_\_ APPROVED BY: \_\_\_\_\_ PROJECT TITLE: \_\_\_\_\_ SHEET NO.: \_\_\_\_\_

CHARLES K. TAYABAN  
 DEPED PROJECT ARCHITECT III

CHRISTOPHER S. HADJAN  
 ENGINEER III

EDGAR H. MADRANG  
 CHIEF ESSD

ESTELA L. CARIBO EdD, CSSD EdD  
 REGIONAL DIRECTOR/DIRECTOR IV

LOCATION: \_\_\_\_\_  
 RAJUNO CG, RAJUNO MOUNTAIN PROVINCE

**RESTORATION OF  
 HERITAGE GABALDON  
 BUILDING**

OWNER: **DEPARTMENT OF EDUCATION  
 CAR REGIONAL OFFICE**  
 SHEET CONTENT: **LIGHTING LAYOUT**

PREPARED BY:  
**CHARLES K. TAYARAN**  
 DATED PROJECT ARCHITECT III

CHECKED BY:  
**CHRISTOPHER B. HAAGAN**  
 ENGINEER III

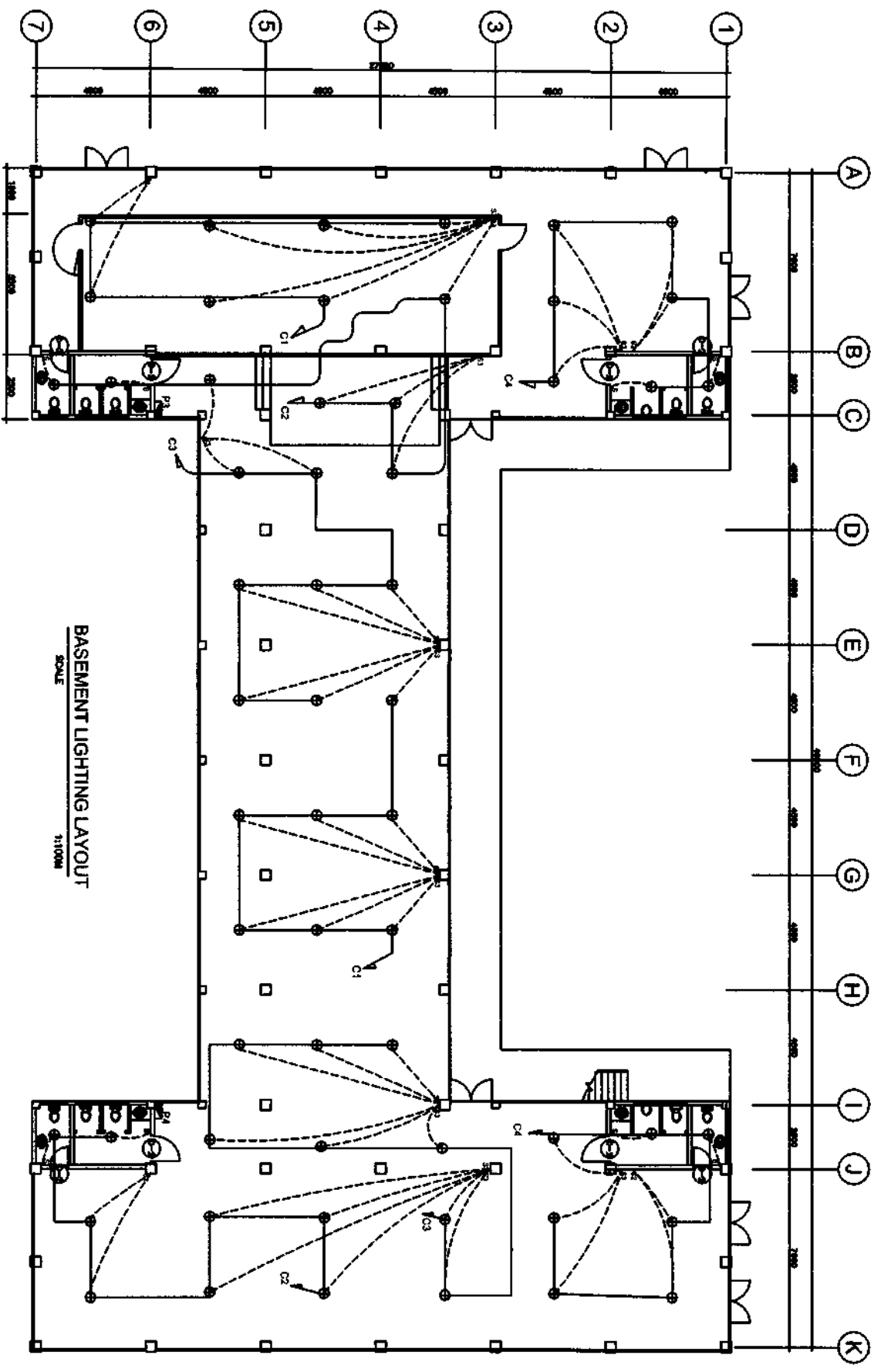
RECOMMENDING APPROVAL:  
**EDOAN H. MADRANO**  
 CHIEF, ESSD

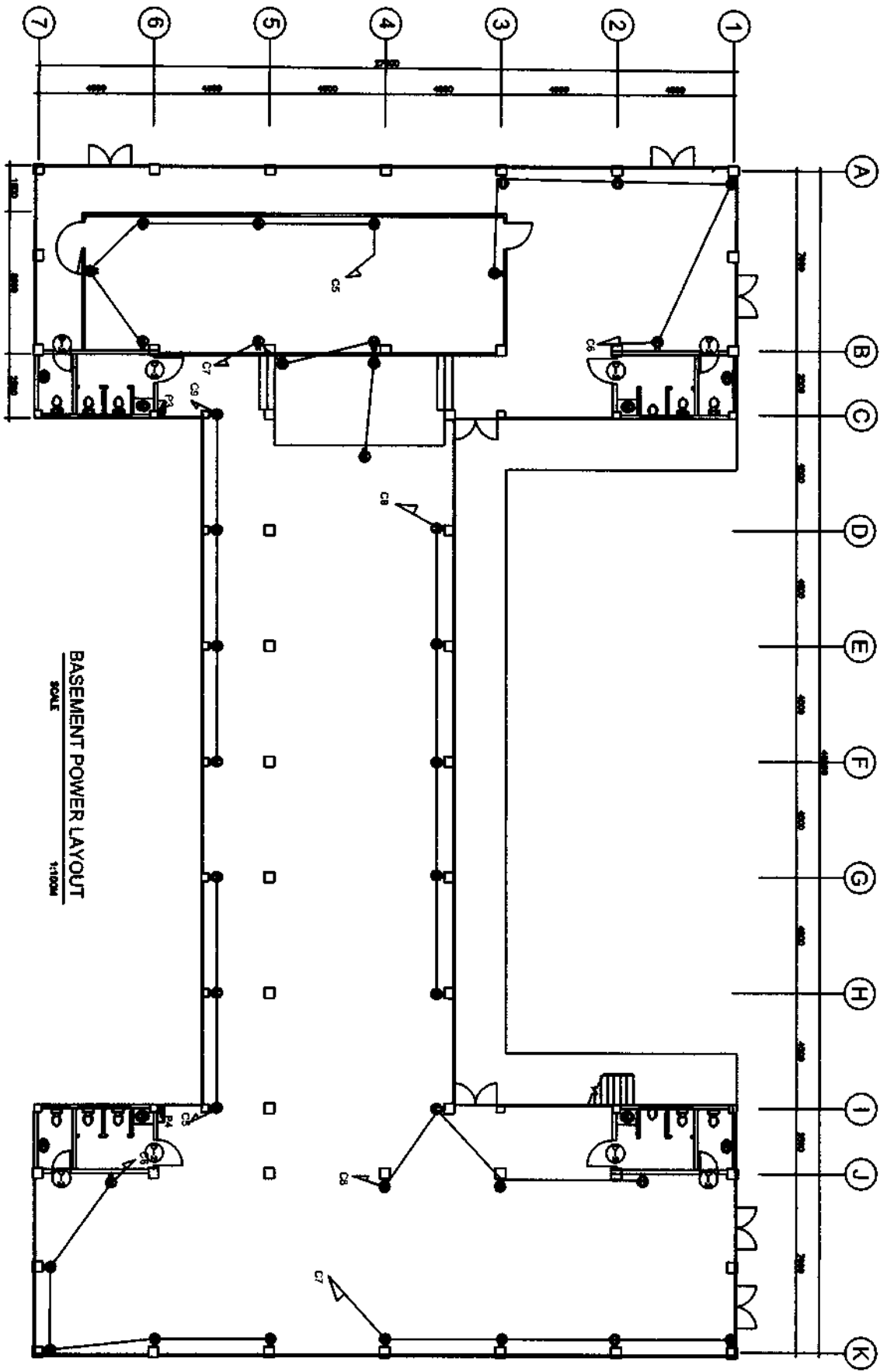
APPROVED BY:  
**ESTELA L. GARCIA ESP. CESO III**  
 REGIONAL DIRECTOR/DIRECTOR IV

PROJECT TITLE:  
**RESTORATION OF HERITAGE GABALDON BUILDING**  
 LOCALITY:  
 BALIKO CS, BALIKO MOUNTAIN PROVINCE


OWNER:  
**DEPARTMENT OF EDUCATION - CAR REGIONAL OFFICE**  
 SHEET CONTENT:  
 BASEMENT LIGHTING LAYOUT

SHEET NO.:  
**E3**  
**5**





**BASEMENT POWER LAYOUT**  
SCALE 1:100M

<b>REPUBLIC OF THE PHILIPPINES</b>  <b>DEPARTMENT OF EDUCATION</b> EDUCATION FACILITIES SECTION MANILA, LA TRINIDAD, BANGOR	PREPARED BY: <b>CHARLES K. TAYAMAN</b> UBERD PROJECT ARCHITECT III	CHECKED BY: <b>CHRISTOPHER S. MADRAN</b> ARCHITECT III	RECOMMENDING APPROVAL: <b>EDGAR H. MADALING</b> CHIEF - ESSD	APPROVED BY: <b>ESTELA L. CARIBO ESP. CESO III</b> REGIONAL DIRECTOR/DIRECTOR IV	PROJECT TITLE: <b>RESTORATION OF HERITAGE GABALDON BUILDING</b> LOCATION: BALIKO CS, BALIKO MOUNTAIN PROVINCE	OWNER: <b>DEPARTMENT OF EDUCATION - CAR REGIONAL OFFICE</b> SHEET CONTENT: BASEMENT POWER LAYOUT	SHEET NO.: <b>E4</b> <b>4</b>

PREPARED BY:  
**CHARLES K. TAYARAN**  
 DEPED PROJECT ARCHITECT III

CHECKED BY:  
**CHRISTOPHER S. HADJAN**  
 ENGINEER III

RECOMMENDING APPROVAL:  
**EDGAR H. MADRINE**  
 CHIEF ESSD

APPROVED BY:  
**ESTELA L. GABALDON**  
 REGIONAL DIRECTOR/DIRECTOR IV

PROJECT TITLE:  
**RESTORATION OF  
 HERITAGE GABALDON  
 BUILDING**

OWNER:  
**DEPARTMENT OF EDUCATION-  
 CAR REGIONAL OFFICE**

SHEET NO.:

SCALE  
 1:100

PROJECT TITLE:  
**RESTORATION OF  
 HERITAGE GABALDON  
 BUILDING**

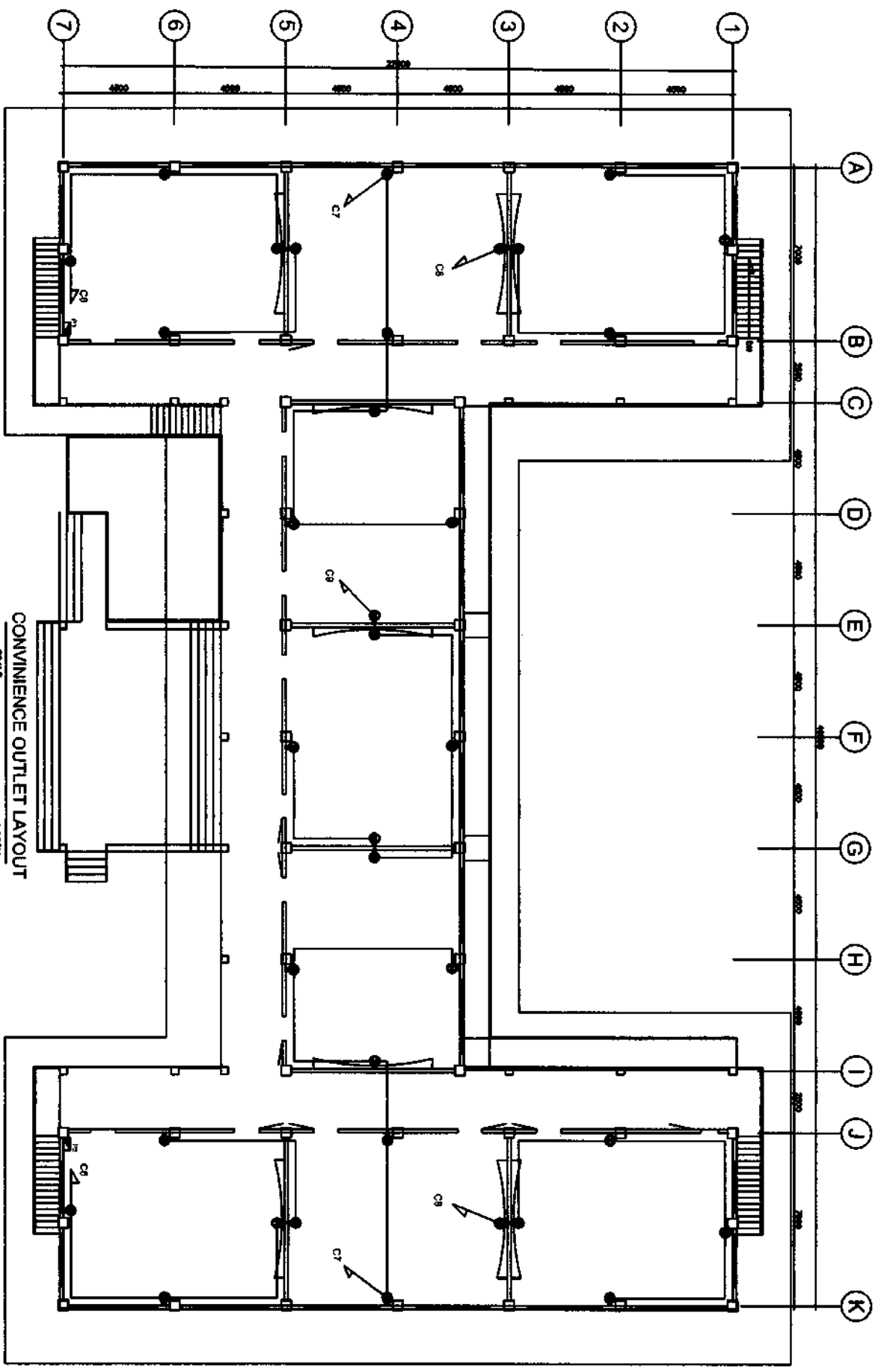
OWNER:  
**DEPARTMENT OF EDUCATION-  
 CAR REGIONAL OFFICE**

SHEET NO.:

SHEET CONTENT:  
**CONVENIENCE OUTLET LAYOUT**

SHEET NO.:

**E5**  
**5**



## ***Section VIII. Bill of Quantities***



Republic of the Philippines  
**Department of Education**  
 CORDILLERA ADMINISTRATIVE REGION  
 Wangel, La Trinidad, Benguet

**PROGRAM OF WORKS**  
**BILL OF QUANTITIES**  
 GAB 2021 - CAR - MOUNTAIN PROVINCE - 001

School : BAUKO CENTRAL SCHOOL			Date:			
School I.D : 136202			Budget Allocation:			
Region : CAR			Engineering and Administrative Overhead:			
Division : MOUNTAIN PROVINCE			Approved Budget for the Contract:			
Project Title :			Completion Period: 240 CD			
: RESTORATION OF GABALDON BUILDING 11 CLASSROOMS			Minimum Required Manpower:			
			General Foreman		Welder	Carpenter
			Helper		Mason	Painter
Plan 27M x 46M & 9.5M X 18M			Minimum Required Equipment:			
Location BAUKO, MOUNTAIN PROVINCE			Hand Tools		Welding Machine	
			One-Bagger Mixer		Bar Cutter	
ITEM NO.	Item Description	% of Total	Unit	Quantity	Total Cost	Remarks
<b>I. DIRECT COST</b>						
	GENERAL REQUIREMENTS		lot	1.00		
	Sub-Total					
<b>RESTORATION OF NINE (9) CLASSROOMS GABALDON SCHOOL BUILDING (27M X 46M)</b>						
1.0000	Earthworks		lot	1.00		
2.0000	Concreting Works (3000 psi)		cu m	418.13		
3.0000	Rebar Works		kg	70,754.44		
4.0000	Formworks		lot	1.00		
5.0000	Masonry Works		sq m	1,189.00		
6.0000	Doors and Windows		lot	1.00		
7.0000	Steel Works		lot	1.00		
8.0000	Roofing Works		lm	1,312.00		
9.0000	Ceiling and Carpentry Works		sq m	1,193.00		
10.0000	Electrical Works		lot	1.00		
12.0000	Sanitary Works		lot	1.00		
13.0000	Painting Works		sq m	3,852.00		
14.0000	Tile Works		sq m	776.00		
	Sub-Total					
<b>RESTORATION OF TWO (2) CLASSROOMS GABALDON SCHOOL BUILDING (9.5M X 18M)</b>						
1.0000	Earthworks		lot	1.00		
2.0000	Concreting Works (3000 psi)		cu m	36.65		
3.0000	Rebar Works		kg	0.00		
4.0000	Formworks		lot	1.00		
5.0000	Masonry Works		sq m	134.00		
6.0000	Doors and Windows		lot	1.00		
7.0000	Steel Works		lot	1.00		
8.0000	Roofing Works		lm	385.00		
9.0000	Ceiling and Carpentry Works		sq m	730.00		
10.0000	Electrical Works		lot	1.00		
12.0000	Sanitary Works		lot	1.00		
13.0000	Painting Works		sq m	179.00		
14.0000	Tile Works		sq m	7.00		
	Sub-Total					
<b>STAGE RELOCATION (7M X 5M)</b>						
1.0000	Earthworks		lot	1.00		
2.0000	Concreting Works (3000 psi)		cu m	39.31		
3.0000	Rebar Works		kg	0.00		
4.0000	Formworks		lot	1.00		
5.0000	Masonry Works		sq m	4.00		
7.0000	Steel Works		lot	1.00		
8.0000	Roofing Works		lot	1.00		
9.0000	Ceiling and Carpentry Works		lm	129.00		
10.0000	Electrical Works		sq m	556.00		
13.0000	Painting Works		lot	1.00		
	Sub-Total					



	<b>Total Direct Cost</b>					
	<b>II. INDIRECT COST 17% of (I - Gen. Requirements)</b>					
	Overhead Expenses (5%)					
	Contingencies (3%)					
	Miscellaneous (1%)					
	Contractor's Profit (8%)					
	<b>Sub-Total</b>					
	<b>III. TAX 5% of (I+II)</b>					
	<b>Sub-Total</b>					
	<b>IV. TOTAL CONSTRUCTION COST (I + II + III)</b>					



Republic of the Philippines  
**Department of Education**  
 CORDILLERA ADMINISTRATIVE REGION  
 Wangal, La Trinidad, Benguet

**PROGRAM OF WORKS**  
**DETAILED COST ESTIMATE**

PROJECT : RESTORATION OF GABALDON BUILDING 11 CLASSROOMS  
 SCHOOL : BAUKO CENTRAL SCHOOL  
 LOCATION : BAUKO, MOUNTAIN PROVINCE  
 OWNER : DEPARTMENT OF EDUCATION

ITEM NO.	DESCRIPTION	UNIT	QTY	UNIT COST		TOTAL COST		GRAND TOTAL
				MATERIAL	LABOR	MATERIAL	LABOR	
<b>GENERAL REQUIREMENTS</b>								
	Mobilization/Temporary Structures, Utilities and Services/Demobilization	lot	1.00					
	Project Billboard	lot	1.00					
	Safety and Health	lot	1.00					
	Fire Clearance/ Permit Fee	lot	1.00					
	Asbuilt plans & Occupancy Permit	lot	1.00					
	Brass marker	lot	1.00					
	Outdoor signage	lot	1.00					
	Lettering Paint @ roof	lot	1.00					
	Hauling Cost (Transshipment from Hardwares at Bontoc, Mt. Province)	lot	1.00					
	<b>Sub-total</b>							

**RESTORATION OF ELEVEN (11) CLASSROOMS GABALDON SCHOOL BUILDING**

**RESTORATION OF NINE (9) CLASSROOMS GABALDON SCHOOL BUILDING (27M X 46M)**

1.0000	<b>Earthworks</b>							
1.0200	Structural Excavation	cu.m	470.00					
1.0300	Leveling w/ earth disposal & site improvement	cu.m	203.00					
1.0600	Soil Poisoning	sq.m	405.00					
	<b>Sub-total</b>							
2.0000	<b>Concreting Works (3000 psi)</b>							
2.0100	Demolition of reinforced concrete	cu.m	25.00					
	Footing, Columns, Beams, Suspended Slab, steps, ramp, decorative arch, roof beams, slab on grade, conc. Table	cu.m	419.00					
2.0200	Portland Cement	bag	3,806.00					
2.0400	Crushed Gravel 1"	cu.m	335.00					
2.0500	Washed Sand	cu.m	251.00					
	<b>Sub-total</b>							
3.0000	<b>Rebar Works</b>							
3.0500	Deformed Round Bars, Grade 40	kg	44,677.48					
3.0900	Deformed Round Bars, Grade 33	kg	26,076.95					
3.1200	G.I. Tie Wire	kg	956.00					
	<b>Sub-total</b>							
4.0000	<b>Formworks</b>							
	Beams, Columns, Suspended slab, steps, ramp	sq.m	2,472.00					
4.0100	Coco Lumber	bd.ft	11,862.00					
4.0200	Plywood Ordinary, 1/4" x 4' x 8'	pc	355.00					
4.0400	CWN, Assorted	kg	238.00					
	<b>Sub-total</b>							
5.0000	<b>Masonry Works</b>							
	Masonry wall & Retaining Wall	sq.m	413.00					
5.0200	CHB 6" thk	pc	1,068.00					
5.0300	CHB 4" thk	pc	4,089.00					
2.0200	Portland Cement	bag	207.00					
2.0500	Washed Sand	cu.m	104.00					
5.0400	10mm x 6m RSB	kg	970.00					
3.1200	G.I. Tie Wire	kg	146.00					
	Plastering	sq.m	825.00					
2.0200	Portland Cement	bag	273.00					
2.0500	Washed Sand	cu.m	28.00					
	Floor Topping	sq.m	776.00					
2.0200	Portland Cement	bag	512.00					

2.0500	Washed Sand	cu.m	52.00				
	<b>Sub-total</b>						
6.0000	<b>Doors and Windows</b>						
6.0100	Removal of Door with Jamb	set	18.00				
6.0700	D-1, (1.00m x 3m) wooden design Steel Door Hinged on steel Jamb/ Frame with barrel bolt both sides & padlock	set	18.00				
6.0320	D-2, Steel Door 0.90m x 2.10m on steel Jamb complete with Accessories with barrel bolt both sides & Fixed Glass Transom 0.90m x 0.3m steel frame	set	9.00				
6.0431	D-3, (0.80m x 1.50m) Flush Door	set	7.00				
6.0320	D-4, Steel Door 1.80m x 2.10m on steel Jamb complete with Accessories with barrel bolt both sides & Fixed Glass Transom 1.80m x 0.3m steel frame	set	1.00				
6.0200	Removal of Window with Jamb	set	26.00				
6.1012	W-1, Wooden Window 3.05m x 3.0m Pivot/awning type window capiz shell on s4s wooden window frames complete with Accessories	set	18.00				
6.1013	W-2, Wooden Window 2.05m x 3.0m Pivot/awning type window capiz shell on s4s wooden window frames complete with Accessories	set	8.00				
6.0800	Swing Type Steel Casement Window	sq.m	23.00				
6.1016	W-6, Steel Window 2m x 0.6m awning type window w/ smoke glass, complete with Accessories	set	4.00				
6.1017	W-7, Steel Window 1m x 0.6m awning type window w/ smoke glass, complete with Accessories	set	4.00				
	<b>Sub-total</b>						
7.0000	<b>Steel Works</b>						
	Steel Railings at ramp						
7.2600	G.I. Pipe 2"Ø Sch.40	pc	19.00				
7.2610	G.I. Pipe 1-½"Ø Sch. 40	pc	19.00				
7.3600	Welding Rod	kg	10.00				
	Steel railings at corridor & Steps						
7.3700	Tubular Galvanized 150 x 50 x 1.5mm	pc	44.00				
7.3720	Tubular Galvanized 50 x 50 x 1.5mm	pc	54.00				
7.3600	Welding Rod	kg	25.00				
7.3800	Steel deck 0.4mm thick	sq.m.	770.00				
	Enclosure of basement & Railings		444.00				
7.2610	G.I. Pipe 1-½"Ø Sch. 40	pc	89.00				
7.2621	6mm wiremesh 2" spacing	pc	268.00				
7.1902	Plain Round Bar 10mmØ x 6m	pc	148.00				
7.2622	2m x 3m Steel Gate 6mm wiremesh 2" spacing on 1" GI pipe frame w/ barrel bolt & padlock	pc	8.00				
7.3600	Welding Rod	kg	39.00				
	<b>Sub-total</b>						
8.0000	<b>Roofing Works</b>						
8.0100	Removal of Roofing Sheets	sq m	1,181.00				
8.0200	Removal of Ridge Roll	pc	128.00				
8.0300	Removal of Flashing	pc	12.00				
8.0400	Removal of Gutter	pc	91.00				
8.0600	G.I. Long-Span Roofing, Corrugated, Pre-Painted, 1220mm x 0.5mm BMT	lm	1,312.00				
8.0700	G.I. Ridge Roll, Preformed, Pre-Painted, 0.610m x 2.440m x 0.6mm BMT	pc	128.00				
8.0800	G.I. Flashing, Preformed, Pre-Painted, 0.610m x 2.440m x 0.4mm BMT	pc	12.00				
8.0812	Gutter, Pre-Painted, 0.610m x 2.440m x 0.4mm BMT	pc	12.00				
8.0700	Valley Gutter, Prepainted, 0.610m x 2.44 m x 0.5mm	pc	29.00				
8.0700	Gutter, Holder 1/4" x 3/4"	pc	86.00				
8.0700	Air vent at roof	lot	1.00				
8.1000	Teckscrew 2-1/2"	pc	32,784.00				
8.1100	Blind Rivets	pc	8,394.00				
8.1300	Roof Sealant	L	27.00				
	<b>Sub-total</b>						
9.0000	<b>Ceiling and Carpentry Works</b>						
	Interior Ceiling	sq.m	770.00				
9.0100	Removal of Ceiling	sq.m	770.00				

	Ceiling Board Frame	bd.ft	5,002.00				
	Hanger	bd.ft	385.00				
9.1700	Rough Lumber, Sun Dried, Tanguile	bd.ft	5,387.00				
	PVC Ceiling Panels	sq.m.	770.00				
	PVC Clip	L.m.	288.00				
9.2100	Woodscrew	pcs	10,773.00				
4.0400	CWN, Assorted	kg	164.00				
9.2200	Concrete Nails	kg	17.00				
9.1900	Wood Preservative, Brown	L	12.00				
	<b>Exterior Ceiling</b>	sq.m	371.00				
	Ceiling Board Frame	bd.ft	2,409.00				
	Hanger	bd.ft	186.00				
	PVC Ceiling Panels	sq.m.	371.00				
	PVC Clip	L.m.	438.00				
9.2100	Woodscrew	pcs	5,187.00				
9.1700	Rough Lumber, Sun Dried, Tanguile	bd.ft	3,150.00				
9.0200	Plywood, Ordinary 1/4" x 4' x 8'	pc	129.00				
9.1400	25mm x 25mm x 300mm Wood slats @25mm clear spacing ceiling ventilation (provide stainless steel wire mesh inside)	pc	40.00				
9.2100	Finishing Nails	kg	4.00				
4.0400	CWN, Assorted	kg	8.00				
9.2200	Concrete Nails	kg	12.00				
9.1900	Wood Preservative, Brown	L	6.00				
	<b>Truss &amp; Rafters (50% Replacement)</b>						
9.1700	2"x8" Truss	bd.ft	4,510.00				
9.1700	2"x6" Purlins	bd.ft	7,479.00				
7.1820	Machine Bolts ( 16 mm dia. ) w/ nut & washer	pc	1,008.00				
4.0400	CWN, Assorted	kg	600.00				
9.1900	Wood Preservative, Brown	L	42.00				
	<b>Exterior Wall</b>						
9.0090	Removal of dilapidated wooden wallings	sq.m	279.00				
9.1700	remove & reinstall/refurbish existing wooden wall studs	bd.ft.	914.00				
9.1700	remove & reinstall/refurbish existing wooden walls	bd.ft.	533.00				
9.2100	Finishing Nails	kg	160.00				
4.0400	CWN, Assorted	kg	92.00				
9.1900	Wood Preservative, Brown	L	13.00				
	<b>Wall partitions &amp; Double walling</b>						
9.0090	Removal of dilapidated wooden wallings	sq.m	177.00				
9.1700	remove & reinstall/refurbish existing wooden wall studs	bd.ft.	290.00				
9.0600	Plywood, Marine 1/2" x 4' x 8'	pc	255.00				
9.2100	Finishing Nails	kg	39.00				
4.0400	CWN, Assorted	kg	29.00				
9.1900	Wood Preservative, Brown	L	5.00				
6.1900	remove & reinstall/refurbish existing Decorative Lattice work @ comidor	sq.m.	41.00				
9.2100	Finishing Nails	kg	3.00				
	<b>Blackboards (9 Set)</b>	sq.m	52.00				
9.1800	S4S Lumber, Kiln Dried, Tanguile	bd.ft	441.00				
9.2000	Lawanit, 1/4" thk	pc	18.00				
9.2100	Finishing Nails	kg	9.00				
4.0400	CWN, Assorted	kg	14.00				
9.2200	Concrete Nails	kg	5.00				
	<b>Sub-total</b>						
10.0000	<b>Electrical Works</b>						
	<b>Roughing-ins</b>						
10.0200	Electrical Conduit uPVC, 20mmØ	pc	315.00				
	RSC 32mmØ	pc	1.00				
10.1000	Entrance Cap 32mm dia.	pc	1.00				
10.1200	Junction Box, 4" x 4" G.I.	pc	144.00				
10.1300	Utility Box, 2" x 4" G.I.	pc	54.00				
10.1400	Grounding Rod, 2.4m x 16mm dia.	pc	1.00				
	<b>Wires &amp; Fixtures</b>						
10.1600	3.5 mm <sup>2</sup> THHN Wire, Stranded	m	7,002.00				
10.1710	8.0 mm <sup>2</sup> THHN Wire, Stranded	m	180.00				
10.2700	Duplex Convenience Outlet, Grounding Type, 20A, 250V	set	53.00				
10.3200	3 Single Pole Wall Switches in One Switch Plate (10 AMP, 230V)	set	31.00				
10.5010	Ceiling Receptacle 3-1/2"Ø	pc	108.00				
10.3100	2 Single Pole Wall Switches in One Switch Plate (10 AMP, 230V)	set	4.00				
10.3100	Single Pole Wall Switches in One Switch Plate (10 AMP, 230V)	set	21.00				
10.3410	12" x 48" LED CEILING PANEL, slim type, 30-50watts, daylight white, 230v w/ painted steel hanger	set	108.00				

10.3601	22W Flat Lamp LED Lighting Fixture with Medium Base Keyless Type Porcelain Receptacle	set	8.00				
10.5400	Wall Fan with Fan Switch	set	36.00				
10.3900	Panel Box, Flush Type, 12 Branches	set	4.00				
10.4100	Circuit Breaker, 20A 2P	set	18.00				
10.4200	Circuit Breaker, 30A 2P	set	22.00				
10.4400	Circuit Breaker, 50A 2P	set	4.00				
10.4900	Vibrating Bell 8"	set	1.00				
10.5000	Push Button, 10A, 230V	set	1.00				
10.5500	Electrical Tape	pc	16.00				
10.5500	Fire extinguisher w/ bracket	pc	12.00				
	25KVA 3 - Phase, SILENT type, diesel generator, 230V, 60Hz output, 0.8 Power Factor with manual and auto operation, with testing and commissioning	Assembly	1.00				
	350AT Manual Transfer Switch, with led indicator for normal and emergency power, complete appropriate cable and accessories, with testing and commissioning	Assembly	1.00				
	<b>Sub-total</b>						
12.0000	<b>Sanitary Works</b>						
12.0110	Three Chamber Septic Vault	unit	1.00				
11.0200	Water Closet 1.6gpf with Accessories	set	10.00				
11.0300	Urinal 0.8gpf	set	2.00				
12.0500	PVC Sanitary Pipe 4"Ø x 3.0m	pc	72.00				
12.0900	PVC Sanitary Elbow 90° x 4"Ø	pc	10.00				
12.2110	PVC Sanitary Tee 4" x 4"	pc	10.00				
12.1600	PVC Sanitary Wye 4" x 4"	pc	10.00				
11.4410	S.S. Floor Drain 4" x 4"	set	16.00				
12.0600	PVC Sanitary Pipe 3"Ø x 3.0m	pc	136.00				
12.1000	PVC Sanitary Elbow 90° x 3"Ø	pc	102.00				
12.0700	PVC Sanitary Pipe 2"Ø x 3.0m	pc	72.00				
12.1100	PVC Sanitary Elbow 90° x 2"Ø	pc	18.00				
11.0300	Water pipes & 4 faucets	lot	1.00				
11.0400	Concrete Counter Sink Type, with Lever Type Faucet and Complete Accessories	set	4.00				
12.0100	Catch Basin	unit	35.00				
12.0400	PVC Sanitary Pipe 6"Ø x 3.0m	pc	53.00				
	<b>Sub-Total</b>						
13.0000	<b>Painting Works</b>						
	Concrete surfaces	sq.m	1,370.00				
13.0100	Neutralizer	gal	18.00				
13.0200	Latex, Flat	gal	55.00				
13.0300	Masonry Putty	gal	55.00				
13.0400	Latex, Semi Gloss	gal	55.00				
13.0500	Acri Color	qrt	15.00				
	Wood surfaces	sq.m	2,482.00				
13.0600	Enamel, Flatwall	gal	127.00				
13.0700	Glazing Putty	gal	127.00				
13.0800	Enamel, Semi Gloss	gal	127.00				
13.0801	Tinting color	qrt	26.00				
13.0900	Paint Thinner	gal	64.00				
	Steel Surfaces						
13.1100	Primer, Zinc Chromate	gal	4.00				
13.1300	Gloss Acrylic Paint	gal	9.00				
13.0500	Acri Color	qrt	3.00				
	<b>Sub-total</b>						
14.0000	<b>Tile Works</b>						
	Flooring	sq.m	776.00				
	Unglazed Floor Tiles 20cm x 60cm wood grain design	pc	6,463.00				
14.0210	Unglazed Floor Tiles 20cm x 20cm Wood grain design	pc	1,125.00				
14.0110	Glazed Wall Tiles 20cm x 20cm	pc	1,200.00				
14.0300	Tile Adhesive 25 kg/bag	bag	179.00				
14.0500	Tile Grout 5 kg/bag	bag	69.00				
2.0200	Portland Cement	bag	128.00				
2.0500	Washed Sand	cu.m	13.00				
	<b>Sub-total</b>						
<b>RESTORATION OF TWO (2) CLASSROOMS GABALDON SCHOOL BUILDING (9.5M X 16M)</b>							
1.0000	<b>Earthworks</b>						
1.0200	Structural Excavation	cu.m	159.00				
1.0300	Leveling w/ earth disposal & site improvement	cu.m	171.00				
1.0600	Soil Poisoning	sq.m	171.00				
	<b>Sub-total</b>						
2.0000	<b>Concreting Works (3000 psi)</b>						
2.0100	Demolition of reinforced concrete	cu.m	7.00				

	Footing, Columns, Beams, Suspended Slab, steps, ramp, decorative arch	cu.m	115.00				
2.0200	Portland Cement	bag	1,045.00				
2.0400	Crushed Gravel 1"	cu.m	92.00				
2.0500	Washed Sand	cu.m	69.00				
	<b>Sub-total</b>						
3.0000	<b>Rebar Works</b>						
3.0500	Deformed Round Bars, Grade 40	kg	10,381.74				
3.0900	Deformed Round Bars, Grade 33	kg	5,897.57				
3.1200	G.I. Tie Wire	kg	245.00				
	<b>Sub-total</b>						
4.0000	<b>Formworks</b>						
	Beams, Columns, Suspended slab, steps, ramp	sq.m	573.00				
4.0100	Coco Lumber	bd.ft	3,435.00				
4.0200	Plywood Ordinary, 1/4" x 4' x 8'	pc	199.00				
4.0400	CWN, Assorted	kg	69.00				
	<b>Sub-total</b>						
5.0000	<b>Masonry Works</b>						
	Masonry Retaining Wall	sq.m	134.00				
5.0300	CHB 4" thk	pc	1,740.00				
2.0200	Portland Cement	bag	67.00				
2.0500	Washed Sand	cu.m	34.00				
5.0400	10mm x 6m RSB	kg	315.00				
3.1200	G.I. Tie Wire	kg	48.00				
	Plastering	sq.m	268.00				
2.0200	Portland Cement	bag	89.00				
2.0500	Washed Sand	cu.m	9.00				
	Floor Topping	sq.m	354.00				
2.0200	Portland Cement	bag	234.00				
2.0500	Washed Sand	cu.m	24.00				
	<b>Sub-total</b>						
6.0000	<b>Doors and Windows</b>						
6.0100	Removal of Door with Jamb	set	4.00				
6.0700	D-1, (1.00m x 3m) wooden design Steel Door Hinged on steel Jamb/ Frame with barrel bolt both sides & padlock	set	4.00				
6.0320	D-2, Steel Door 0.90m x 2.10m on steel Jamb complete with Accessories with barrel bolt both sides & Fixed Glass Transom 0.90m x 0.3m steel frame	set	2.00				
6.0420	D-3, Flush Door 0.90m x 2.10m on 100mm Wooden Jamb complete with Accessories (lever type door knob)	set	4.00				
6.0200	Removal of Window with Jamb	set	8.00				
6.1012	W-1, Wooden Window 3.05m x 3.0m Pivot/awning type window capiz shell on s4s wooden window frames complete with Accessories	set	6.00				
6.1013	W-2, Wooden Window 1.60m x 3.0m Pivot/awning type window capiz shell on s4s wooden window frames complete with Accessories	set	2.00				
	W-3, Wooden Window 0.80m x 0.80m Pivot/awning type window capiz shell on s4s wooden window frames complete with Accessories	set	4.00				
	Fixed High Window Opening (front only) w/ wooden mouldings	sq.m.	11.00				
6.0800	Swing Type Steel Casement Window	sq.m.	29.00				
	<b>Sub-total</b>						
7.0000	<b>Steel Works</b>						
	Steel Railings at ramp						
7.2600	G.I. Pipe 2"Ø Sch.40	pc	11.00				
7.2610	G.I. Pipe 1-1/2"Ø Sch. 40	pc	11.00				
7.3600	Welding Rod	kg	6.00				
	Steel railings at corridor & Steps						
7.3700	Tubular Galvanized 150 x 50 x 1.5mm	pc	24.00				
7.3720	Tubular Galvanized 50 x 50 x 1.5mm	pc	40.00				
7.3600	Welding Rod	kg	16.00				
7.3800	Steel deck 0.4mm thick	sq.m.	177.00				
	<b>Sub-total</b>						
8.0000	<b>Roofing Works</b>						
8.0100	Removal of Roofing Sheets	sq m	356.00				
8.0200	Removal of Ridge Roll	pc	18.00				
8.0300	Removal of Flashing	pc	24.00				
8.0400	Removal of Gutter	pc	42.00				
8.0600	G.I. Long-Span Roofing, Corrugated, Pre-Painted, 1220mm x 0.5mm BMT	lm	396.00				
8.0700	G.I. Ridge Roll, Prefomed, Pre-Painted, 0.610m x 2.440m x 0.6mm BMT	pc	18.00				

8.0800	G.I. Flashing, Preformed, Pre-Painted, 0.610m x 2.440m x 0.4mm BMT	pc	24.00				
8.0812	Gutter, Pre-Painted, 0.610m x 2.440m x 0.4mm BMT	pc	42.00				
8.0700	Gutter, Holder 1/4" x 3/4"	pc	125.00				
8.0700	Air vent at roof	lot	2.00				
8.1000	Teckscrew 2-1/2"	pc	9,880.00				
8.1100	Blind Rivets	pc	4,120.00				
8.1300	Roof Sealant	L	8.00				
	<b>Sub-total</b>						
9.0000	<b>Ceiling and Carpentry Works</b>						
	Interior Ceiling	sq.m	171.00				
9.0100	Removal of Ceiling	sq.m	171.00				
	Ceiling Board Frame	bd.ft	1,112.00				
	Hanger	bd.ft	324.00				
9.1700	Rough Lumber, Sun Dried, Tanguile	bd.ft	1,454.00				
	PVC Ceiling Panels	sq.m.	171.00				
	PVC Clip	L.m.	288.00				
9.2100	Woodscrew	pcs	2,394.00				
4.0400	CWN, Assorted	kg	37.00				
9.2200	Concrete Nails	kg	4.00				
9.1900	Wood Preservative, Brown	L	6.00				
	Exterior Ceiling	sq.m	215.00				
	Ceiling Board Frame	bd.ft	1,393.00				
	Hanger	bd.ft	429.00				
9.1700	Rough Lumber, Sun Dried, Tanguile	bd.ft	1,821.00				
	PVC Ceiling Panels	sq.m.	215.00				
	PVC Clip	L.m.	288.00				
9.2100	Woodscrew	pcs	2,999.00				
9.0200	PVC ceiling	pc	75.00				
9.1400	25mm x 25mm x 300mm Wood slats @25mm clear spacing ceiling ventilation (provide stainless steel wire mesh inside)	pc	18.00				
9.2100	Finishing Nails	kg	2.00				
4.0400	CWN, Assorted	kg	5.00				
9.2200	Concrete Nails	kg	7.00				
9.1900	Wood Preservative, Brown	L	7.00				
	<b>Girt, Truss &amp; Rafters (50% Replacement)</b>						
9.1700	2"x8" Girt & Truss	bd.ft	1,323.00				
9.1700	2"x6" Purlins	bd.ft	2,527.00				
7.1820	Machine Bolts ( 16 mm dia. ) w/ nut & washer	pc	312.00				
4.0400	CWN, Assorted	kg	193.00				
9.1900	Wood Preservative, Brown	L	27.00				
	<b>Exterior Walls (Total Replacement at rear &amp; both sides only)</b>						
9.0090	Removal of dilapidated wooden wallings	sq.m	55.00				
9.0500	Prepainted Metal wall cladding 0.40mm thk.	L.m.	61.00				
9.1700	Rough Lumber, Sun Dried, Tanguile	bd.ft	510.00				
4.0400	CWN, Assorted	kg	11.00				
8.1000	Teckscrew 2-1/2" for wooden	pc	816.00				
9.1900	Wood Preservative, Brown	L	2.00				
	<b>Wall partitions</b>						
9.0090	Removal of dilapidated wooden wallings	sq.m	30.00				
9.0600	Plywood, Marine 1/2" x 4' x 8'	pc	21.00				
9.1700	Rough Lumber, Sun Dried, Tanguile	bd.ft	206.00				
4.0400	CWN, Assorted	kg	6.00				
9.2100	Finishing Nails	kg	6.00				
9.1900	Wood Preservative, Brown	L	1.00				
	<b>New interior walls (double walling)w/ groove</b>						
9.0600	Phwood, Marine 1/2" x 4' x 8'	pc	40.00				
9.2100	Finishing Nails	kg	10.00				
	<b>Corridor Exterior walls</b>						
9.1700	remove & reinstall/refurbish existing wood planks	bd.ft	578.00				
6.1900	remove & reinstall/refurbish existing Decorative Lattice work @ corridor	sq.m.	18.00				
9.2100	Finishing Nails	kg	15.00				
	<b>Blackboards (2 Set)</b>						
	Blackboards (2 Set)	sq.m	12.00				
9.1800	S4S Lumber, Kiln Dried, Tanguile	bd.ft	98.00				
9.2000	Lawanit, 1/4" thk	pc	4.00				
9.2100	Finishing Nails	kg	2.00				
4.0400	CWN, Assorted	kg	3.00				
9.2200	Concrete Nails	kg	1.00				
	<b>Sub-total</b>						
10.0000	<b>Electrical Works</b>						
	<b>Roughing-ins</b>						
10.0200	Electrical Conduit uPVC, 20mmØ	pc	300.00				
	RSC 32mmØ	pc	1.00				
10.1000	Entrance Cap 32mm dia.	pc	1.00				
10.1200	Junction Box, 4" x 4" G.I.	pc	128.00				

10.1300	Utility Box, 2" x 4" G.I.	pc	48.00				
10.1400	Grounding Rod, 2.4m x 16mm dia.	pc	1.00				
	<b>Wires &amp; Fixtures</b>						
10.1600	3.5 mm <sup>2</sup> THHN Wire, Stranded	m	3,112.00				
10.1710	8.0 mm <sup>2</sup> THHN Wire, Stranded	m	60.00				
10.2700	Duplex Convenience Outlet, Grounding Type, 20A, 250V	set	16.00				
10.3200	3 Single Pole Wall Switches in One Switch Plate (10 AMP, 230V)	set	16.00				
10.5400	Ceiling Receptacle 3-1/2"Ø	set	28.00				
10.3100	2 Single Pole Wall Switches in One Switch Plate (10 AMP, 230V)	set	4.00				
10.3300	Three Way Wall Switch (16 AMP, 230 V)	set	2.00				
10.3410	12" x 48" LED CEILING PANEL, slim type, 30-50watts, daylight white, 230v w/ painted steel hanger	set	28.00				
10.3600	1 -18W, 230V, 60Hz AC, Compact Fluorescent Lighting Fixture with Medium Base Keyless Type Porcelain Receptacle	set	4.00				
10.5400	Wall Fan with Fan Switch	set	16.00				
10.3900	Panel Box, Flush Type, 12 Branches	set	3.00				
10.4100	Circuit Breaker, 20A 2P	set	30.00				
10.4400	Circuit Breaker, 50A 2P	set	2.00				
10.4900	Vibrating Bell 8"	set	1.00				
10.5000	Push Button, 10A, 230V	set	1.00				
10.5500	Electrical Tape	pc	16.00				
10.5500	Fire extinguisher w/ bracket	pc	3.00				
	<b>Sub-total</b>						
12.0000	<b>Sanitary Works</b>						
12.0110	Three Chamber Septic Vault	unit	1.00				
11.0200	Water Closet 1.6gpf with Accessories	set	4.00				
12.0500	PVC Sanitary Pipe 4"Ø x 3.0m	pc	24.00				
12.0900	PVC Sanitary Elbow 90° x 4"Ø	pc	4.00				
12.2110	PVC Sanitary Tee 4" x 4"	pc	4.00				
12.1600	PVC Sanitary Wye 4" x 4"	pc	4.00				
11.4410	S.S. Floor Drain 4" x 4"	set	16.00				
12.0600	PVC Sanitary Pipe 3"Ø x 3.0m	pc	64.00				
12.1000	PVC Sanitary Elbow 90° x 3"Ø	pc	48.00				
12.0700	PVC Sanitary Pipe 2"Ø x 3.0m	pc	24.00				
12.1100	PVC Sanitary Elbow 90° x 2"Ø	pc	16.00				
11.0300	Water pipes & 4 faucets	lot	1.00				
11.0400	Concrete Counter Sink Type, with Lever Type Faucet and Complete Accessories	set	2.00				
12.0100	Catch Basin	unit	12.00				
12.0400	PVC Sanitary Pipe 6"Ø x 3.0m	pc	18.00				
	<b>Sub-Total</b>						
13.0000	<b>Painting Works</b>						
	Concrete surfaces	sq.m	268.00				
13.0100	Neutralizer	gal	4.00				
13.0200	Latex, Flat	gal	11.00				
13.0300	Masonry Putty	gal	11.00				
13.0400	Latex, Semi Gloss	gal	11.00				
13.0500	Acri Color	qrt	3.00				
	Wood surfaces	sq.m	704.00				
13.0600	Enamel, Flatwall	gal	36.00				
13.0700	Glazing Putty	gal	36.00				
13.0800	Enamel, Semi Gloss	gal	36.00				
13.0900	Paint Thinner	gal	18.00				
	Steel Surfaces						
13.1100	Primer, Zinc Chromate	gal	4.00				
13.1300	Gloss Acrylic Paint	gal	9.00				
13.0500	Acri Color	qrt	3.00				
13.0500	paint brush 3"	pcs	1.00				
	<b>Sub-total</b>						
14.0000	<b>Tile Works</b>						
	Flooring	sq.m	177.00				
	Unglazed Floor Tiles 20cm x 60cm wood grain design	pc	1,475.00				
14.0210	Unglazed Floor Tiles 20cm x 20cm Wood grain design	pc	300.00				
2.0500	Washed Sand	cu.m	6.00				
2.0200	Portland Cement	bag	65.00				
14.0110	Glazed Wall Tiles 20cm x 20cm	pc	270.00				
14.0300	Tile Adhesive 25 kg/bag	bag	60.00				
14.0500	Tile Grout 5 kg/bag	bag	16.00				
	<b>Sub-total</b>						
<b>STAGE RELOCATION (7M X 5M)</b>							
1.0000	<b>Earthworks</b>						
1.0200	Structural Excavation	cu.m	21.00				



1.0300	Leveling w/ earth disposal & site improvement	cu.m	50.00				
1.0600	Soil Poisoning	sq m	50.00				
	<b>Sub-total</b>						
2.0000	<b>Concreting Works (3000 psi)</b>						
2.0100	Demolition of reinforced concrete	cu.m	2.00				
	Footing, Columns, Beams, Slab, steps, ramp	cu.m	24.00				
2.0200	Portland Cement	bag	218.00				
2.0400	Crushed Gravel 1"	cu.m	20.00				
2.0500	Washed Sand	cu.m	15.00				
	<b>Sub-total</b>						
3.0000	<b>Rebar Works</b>						
3.0500	Deformed Round Bars, Grade 40	kg	1,191.20				
3.0900	Deformed Round Bars, Grade 33	kg	966.98				
3.1200	G.I. Tie Wire	kg	33.00				
	<b>Sub-total</b>						
4.0000	<b>Formworks</b>						
	Beams, Columns, Suspended slab, steps, ramp	sq.m	93.00				
4.0100	Coco Lumber	bd.ft	558.00				
4.0200	Plywood Ordinary, 1/4" x 4' x 8'	pc	33.00				
4.0400	CWN, Assorted	kg	12.00				
	<b>Sub-total</b>						
5.0000	<b>Masonry Works</b>						
	Masonry Retaining Wall	sq.m	40.00				
5.0200	CHB 6" thk	pc	500.00				
2.0200	Portland Cement	bag	20.00				
2.0500	Washed Sand	cu.m	10.00				
5.0400	10mm x 6m RSB	kg	94.00				
3.1200	G.I. Tie Wire	kg	15.00				
	Plastering	sq.m	80.00				
2.0200	Portland Cement	bag	27.00				
2.0500	Washed Sand	cu.m	3.00				
	Floor Topping	cu.m	6.00				
2.0200	Portland Cement	bag	4.00				
2.0500	Washed Sand	cu.m	1.00				
	<b>Sub-total</b>						
7.0000	<b>Steel Works</b>						
	Steel Railings at Steps						
7.2600	G.I. Pipe 2"Ø Sch. 40	pc	12.00				
7.2610	G.I. Pipe 1-1/2"Ø Sch. 40	pc	12.00				
7.3600	Welding Rod	kg	6.00				
	<b>Sub-total</b>		220.00				
8.0000	<b>Roofing Works</b>						
8.0100	Removal of Roofing Sheets	sq m	84.00				
8.0200	Removal of Ridge Roll	pc	6.00				
8.0400	Removal of Gutter	pc	11.00				
8.0600	G.I. Long-Span Roofing, Corrugated, Pre-Painted, 1220mm x 0.5mm BMT	lm	112.00				
8.0700	G.I. Ridge Roll, Preformed, Pre-Painted, 0.610m x 2.440m x 0.6mm BMT	pc	12.00				
8.0800	G.I. Flashing, Preformed, Pre-Painted, 0.610m x 2.440m x 0.4mm BMT	pc	11.00				
8.0812	Gutter, Pre-Painted, 0.610m x 2.440m x 0.4mm BMT	pc	11.00				
8.0700	Gutter, Holder 1/4" x 3/4"	pc	33.00				
8.1000	Teckscrew 2-1/2"	pc	2,800.00				
8.1100	Blind Rivets	pc	1,695.00				
8.1300	Roof Sealant	L	3.00				
	<b>Sub-total</b>						
9.0000	<b>Ceiling and Carpentry Works</b>						
	Ceiling	sq.m	60.00				
9.0100	Removal of Ceiling	sq.m	60.00				
	Ceiling Board Frame	bd.ft	390.00				
	Hanger	bd.ft	120.00				
9.1700	Rough Lumber, Sun Dried, Tanguile	bd.ft	510.00				
9.0500	Plywood, Marine 1/4" x 4' x 8'	pc	21.00				
9.2100	Finishing Nails	kg	146.00				
4.0400	CWN, Assorted	kg	13.00				
9.2200	Concrete Nails	kg	2.00				
9.1900	Wood Preservative, Brown	L	2.00				
	Girt, Truss & Rafters						
9.1700	2"x8" Girt & Truss	bd.ft	700.00				
9.1700	2"x6" Purlins	bd.ft	263.00				
7.1820	Machine Bolts ( 16 mm dia. ) w/ nut & washer	pc	60.00				
4.0400	CWN, Assorted	kg	25.00				
9.1900	Wood Preservative, Brown	L	4.00				
	<b>Sub-total</b>						
10.0000	<b>Electrical Works</b>						
	Roughing-ins						
10.0200	Electrical Conduit uPVC, 20mmØ	pc	75.00				
	RSC 32mmØ	pc	1.00				

10.1000	Entrance Cap 32mm dia.	pc	1.00				
10.1200	Junction Box, 4" x 4" G.I.	pc	2.00				
10.1300	Utility Box, 2" x 4" G.I.	pc	2.00				
	<b>Wires &amp; Fixtures</b>						
10.1600	3.5 mm <sup>2</sup> THHN Wire, Stranded	m	156.00				
10.1710	8.0 mm <sup>2</sup> THHN Wire, Stranded	m	60.00				
10.2700	Duplex Convenience Outlet, Grounding Type, 20A, 250V	set	2.00				
10.3200	3 Single Pole Wall Switches in One Switch Plate (10 AMP, 230V)	set	2.00				
10.2800	Spot light	set	4.00				
10.5400	Ceiling Receptacle 3-1/2"Ø	set	6.00				
10.3410	12" x 48" LED CEILING PANEL, slim type, 30-50watts, daylight white, 230v w/ painted steel hanger	set	6.00				
10.5500	Electrical Tape	pc	16.00				
	<b>Sub-total</b>						
13.0000	<b>Painting Works</b>						
	<b>Concrete surfaces</b>						
13.0100	Neutralizer	sq.m	80.00				
13.0200	Latex, Flat	gal	2.00				
13.0300	Masonry Putty	gal	4.00				
13.0400	Latex, Semi Gloss	gal	4.00				
13.0500	Acri Color	qrt	1.00				
	<b>Wood surfaces</b>						
13.0600	Enamel, Flatwall	sq.m	60.00				
13.0700	Enamel, Flatwall	gal	4.00				
13.0700	Glazing Putty	gal	4.00				
13.0800	Enamel, Semi Gloss	gal	4.00				
13.0900	Paint Thinner	gal	2.00				
	<b>Steel Surfaces</b>						
13.1100	Primer, Zinc Chromate	gal	4.00				
13.1300	Gloss Acrylic Paint	gal	9.00				
	<b>Sub-total</b>						
<b>I.</b>	<b>DIRECT COST</b>						
<b>II.</b>	<b>INDIRECT COST 17% of (I)</b>						
<b>III.</b>	<b>TAX 5% of (I + II)</b>						
<b>IV.</b>	<b>TOTAL CONSTRUCTION COST (I + II + III)</b>						

***Section IX. Checklist of Technical and Financial Documents***

# Checklist of Technical and Financial Documents

## I. TECHNICAL COMPONENT ENVELOPE

### *Class "A" Documents*

#### Legal Documents

- (a) Valid PhilGEPS Registration Certificate (Platinum Membership) (all pages);  
**or**
- (b) Registration certificate from Securities and Exchange Commission (SEC), Department of Trade and Industry (DTI) for sole proprietorship, or Cooperative Development Authority (CDA) for cooperatives or its equivalent document;  
**and**
- (c) Mayor's or Business permit issued by the city or municipality where the principal place of business of the prospective bidder is located, or the equivalent document for Exclusive Economic Zones or Areas;  
**and**
- (e) Tax clearance per E.O. No. 398, s. 2005, as finally reviewed and approved by the Bureau of Internal Revenue (BIR).

#### Technical Documents

- (f) Statement of the prospective bidder of all its ongoing government and private contracts, including contracts awarded but not yet started, if any, whether similar or not similar in nature and complexity to the contract to be bid; **and**
- (g) Statement of the bidder's Single Largest Completed Contract (SLCC) similar to the contract to be bid, except under conditions provided under the rules;  
**and**
- (h) Philippine Contractors Accreditation Board (PCAB) License;  
**or**  
Special PCAB License in case of Joint Ventures;  
**and** registration for the type and cost of the contract to be bid; **and**
- (i) Original copy of Bid Security. If in the form of a Surety Bond, submit also a certification issued by the Insurance Commission;  
**or**  
Original copy of Notarized Bid Securing Declaration; **and**
- (j) Project Requirements, which shall include the following:
  - a. Organizational chart for the contract to be bid;
  - b. List of contractor's key personnel (e.g., Project Manager, Project Engineers, Materials Engineers, and Foremen), to be assigned to the contract to be bid, with their complete qualification and experience data;
  - c. List of contractor's major equipment units, which are owned, leased, and/or under purchase agreements, supported by proof of ownership or certification of availability of equipment from the equipment lessor/vendor for the duration of the project, as the case may be; **and**
- (k) Original duly signed Omnibus Sworn Statement (OSS);

**and** if applicable, Original Notarized Secretary's Certificate in case of a corporation, partnership, or cooperative; or Original Special Power of Attorney of all members of the joint venture giving full power and authority to its officer to sign the OSS and do acts to represent the Bidder.

**other requirement for submission:**

- Site Inspection Certificate signed by the Principal/Officer-In Charge/ Officer of the Day of the School. Site Inspection Certificate is to be accompanied by a picture of the project engineer/foreman/owner or any technical employee with the Gabaldon bldg. as the background

**Financial Documents**

- (l) The prospective bidder's audited financial statements, showing, among others, the prospective bidder's total and current assets and liabilities, stamped "received" by the BIR or its duly accredited and authorized institutions, for the preceding calendar year which should not be earlier than two (2) years from the date of bid submission; **and**
- (m) The prospective bidder's computation of Net Financial Contracting Capacity (NFCC).

***Class "B" Documents***

- (n) If applicable, duly signed joint venture agreement (JVA) in accordance with RA No. 4566 and its IRR in case the joint venture is already in existence; **or** duly notarized statements from all the potential joint venture partners stating that they will enter into and abide by the provisions of the JVA in the instance that the bid is successful.

**II. FINANCIAL COMPONENT ENVELOPE**

- (o) Original of duly signed and accomplished Financial Bid Form; **and**

**Other documentary requirements under RA No. 9184**

- (p) Original of duly signed Bid Prices in the Bill of Quantities; **and**
- (q) Duly accomplished Detailed Estimates Form, including a summary sheet indicating the unit prices of construction materials, labor rates, and equipment rentals used in coming up with the Bid; **and**
- (r) Cash Flow by Quarter.

**other requirement:**

- (s) USB/flash drive (soft copy of Financial proposal in excel format)

Republic of the Philippines



Government Procurement Policy Board