



Republic of the Philippines
Department of Education
Cordillera Administrative Region

BID BULLETIN NO. 1

TO : All interested Bidders
All Concerned

FROM : 
FLORANTE E. VERGARA
BAC Chairperson

PROJECT : **REPAIR OF DepEd-CAR REGIONAL OFFICE WALKWAY,
DRAINAGE AND FENCE**

DATE : May 6, 2021

IDENTIFICATION NUMBER: CB 2021-010

For the information of all interested bidders and all concerned, attached is BID BULLETIN No. 1 for the above-mentioned project which contains Section VII: Drawings.

This is part of the bidding documents.

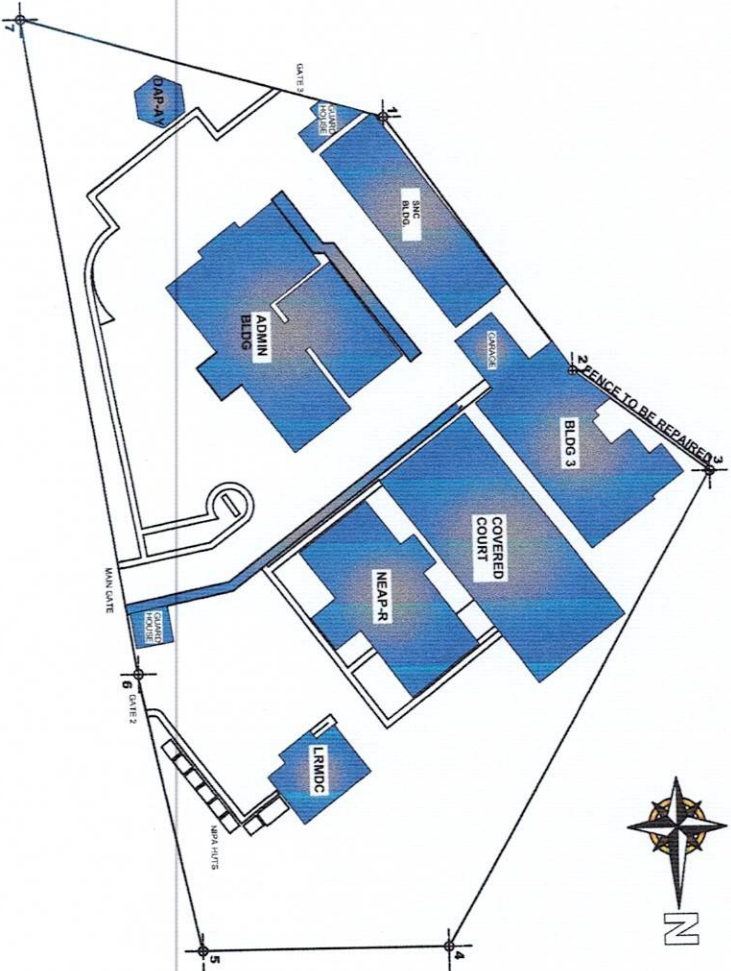


Section VII. Drawings

(CB 2021-010)

**REPAIR OF DepEd-CAR REGIONAL OFFICE
WALKWAY, DRAINAGE AND FENCE**

2 SITE PLAN



REPUBLIC OF THE PHILIPPINES
DepEd
 DEPARTMENT OF EDUCATION
 EDUCATION FACILITIES SECTION
 MANILA, LA TRINIDAD, BRUNETT

PREPARED BY: **KEMERVY G. RIZALDO**
 ENGINEER I

CHECKED BY: **CHRISTOPHER B. HADSAN**
 ENGINEER III

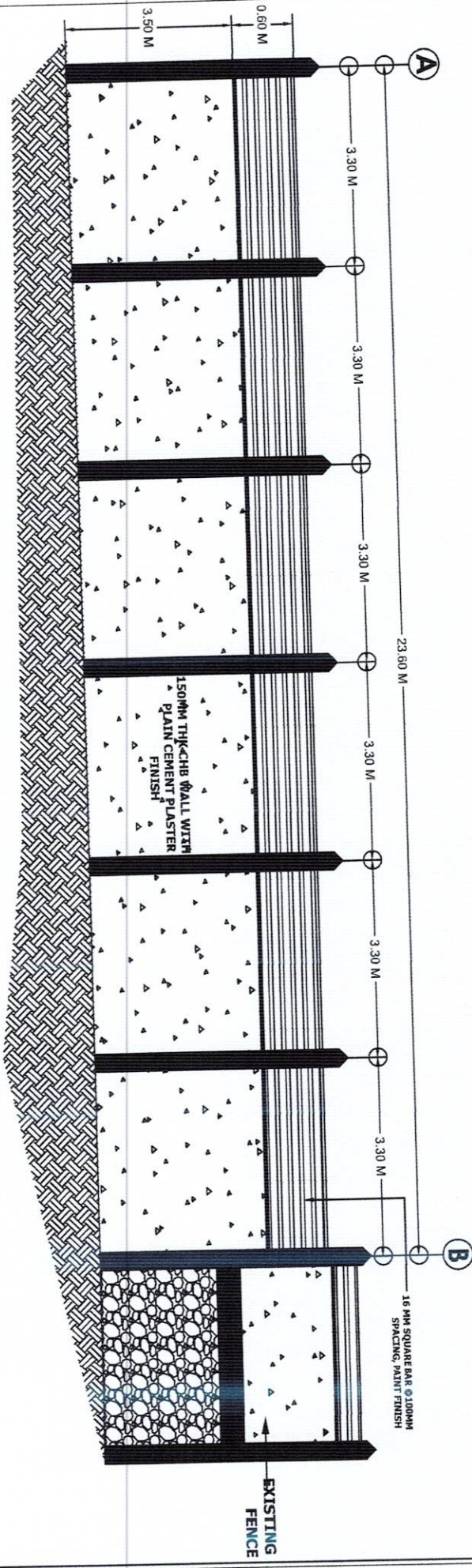
RECOMMENDING APPROVAL: **EDGAR H. MADLALING**
 CHIEF, ESSD

APPROVED BY: **ESTELA L. CARIBO EDO, CESO III**
 REGIONAL DIRECTOR/DIRECTOR IV

PROJECT TITLE:
REGIONAL OFFICE REPAIR OF FENCE

OWNER:
DEPARTMENT OF EDUCATION- CAR REGIONAL OFFICE
 SHEET CONTENT:
PROPOSED REGIONAL OFFICE REPAIR OF FENCE ELEVATION

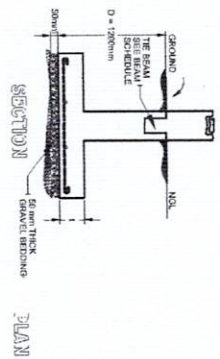
SHEET NO.:
AS 1
2



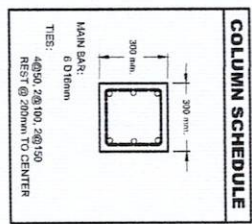
1
A/S 2

FENCE ELEVATION AT THE BACK OF CANTEEN
NOT TO SCALE

PREPARED BY : KEMERY G. RIZALDO ENGINEER I		CHECKED BY : CHRISTOPHER B. HADSAN ENGINEER III		RECOMMENDING APPROVAL : EDGAR H. MADLAING CHIEF, ESSD		APPROVED BY : ESTELA L. CARINO EDD, CESO III REGIONAL DIRECTOR DIRECTOR IV		PROJECT TITLE : REGIONAL OFFICE REPAIR OF FENCE		OWNER : DEPARTMENT OF EDUCATION - CAR REGIONAL OFFICE		SHEET NO. : A/S 2	
DEPARTMENT OF EDUCATION DepEd EDUCATION FACILITIES SECTION W. ANTON L. TRINIDAD, BRNGER III		ENGINEER I		ENGINEER III		CHIEF, ESSD		REGIONAL DIRECTOR DIRECTOR IV		REGIONAL OFFICE REPAIR OF FENCE		SHEET NO. : 3	



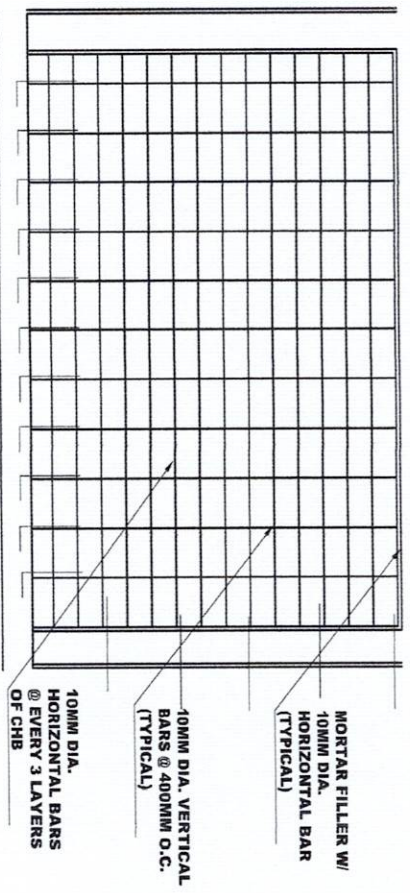
2 FOOTING DETAIL
DRAWN: S1
NOT TO SCALE



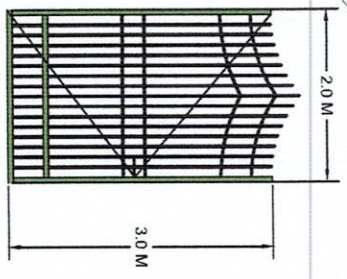
2 COLUMN DETAIL
DRAWN: S2
NOT TO SCALE

FOOTING MARK	FOOTING DIMENSIONS (mm)			REINFORCEMENT		REMARKS	
	LENGTH (L)	WIDTH (W)	Thickness (t)	DEPTH (D)	BAR X		BAR Y
F-1	600	600	300	1000	4 - D16mm	4 - D16mm	SQUARE FOOTING

BEAM MARK	BEAM DIMENSIONS		STEEL REINFORCEMENT						STIRRUPS D10 mm (UNLESS NOTED OTHERWISE) REST @200 TO CENTER	
	WIDTH (b,mm)	DEPTH (h,mm)	REBAR DIAMETER (mm)	LEFT TOP	LEFT BOT.	MIDSPAN TOP	MIDSPAN BOT.	RIGHT TOP		RIGHT BOT.
	TB	200	300	16	3	3	3	3		3



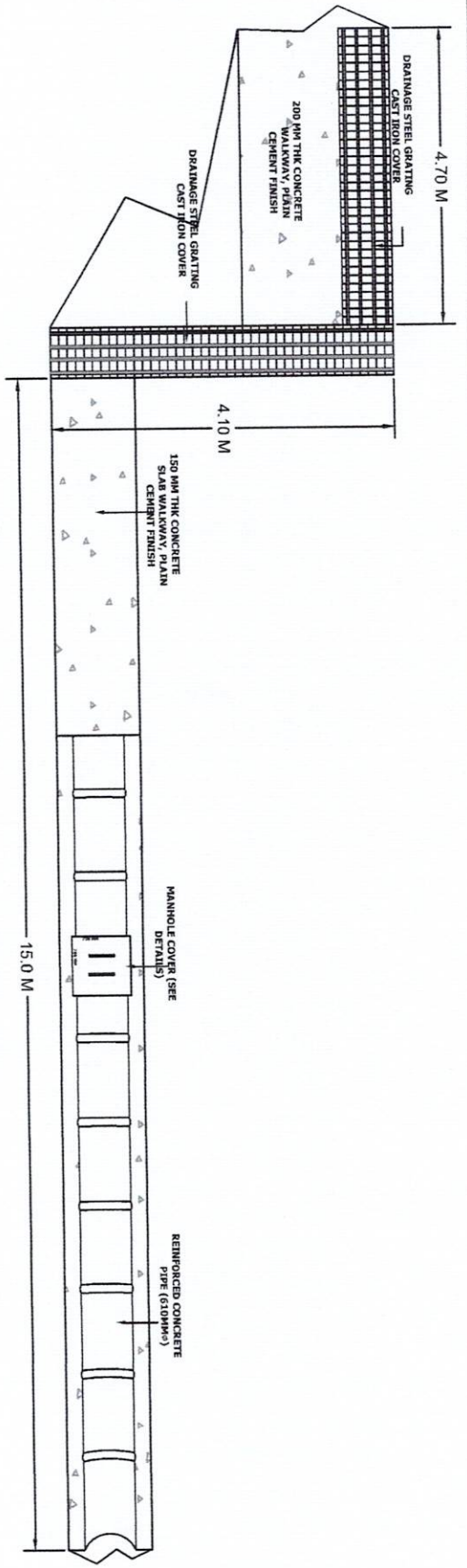
1 TYPICAL MASONRY ELEVATION
DRAWN: S3
NOT TO SCALE



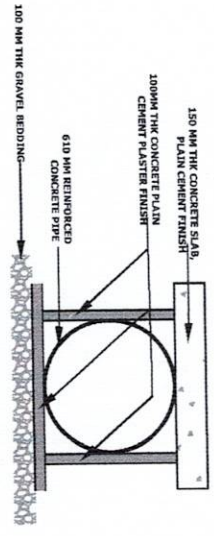
QUANTITY	DESCRIPTION
1	STEEL GATE, COMPLETE WITH JAMB, ACCESSORIES AND LOCKSET

1 GATE SCHEDULE
DRAWN: S4
NOT TO SCALE

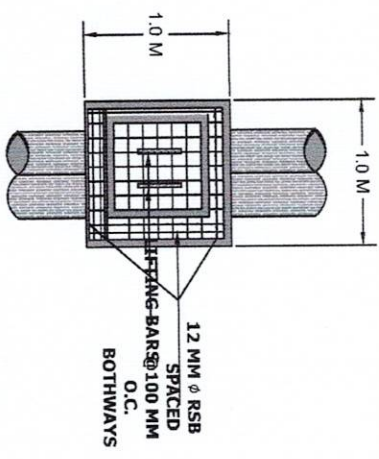
REPUBLIC OF THE PHILIPPINES DepEd DEPARTMENT OF EDUCATION EDUCATION FACILITIES SECTION MANOALA, LA TRINIDAD, BANGOR	PREPARED BY: KEMERY G. RIZALDO ENGINEER I	CHECKED BY: CHRISTOPHER B. HADSAN ENGINEER III	RECOMMENDING APPROVAL: EDGAR H. MADLAINO CHIEF, ESSD	APPROVED BY: ESTELA L. CARINO EDD, CESO III REGIONAL DIRECTOR DIRECTOR IV	PROJECT TITLE: REGIONAL OFFICE REPAIR OF FENCE	OWNER: DEPARTMENT OF EDUCATION - CAR REGIONAL OFFICE	SHEET CONTENT: FOUNDATION PLAN COLUMN AND THE BEAM DETAILS TYPICAL MASONRY DETAILS	SHEET NO.: S1 1
--	---	--	--	---	--	--	---	----------------------------------



1 DRAINAGE CANAL TOP VIEW (CANTEEN AREA)
D 1 DRAWN
NOT TO SCALE

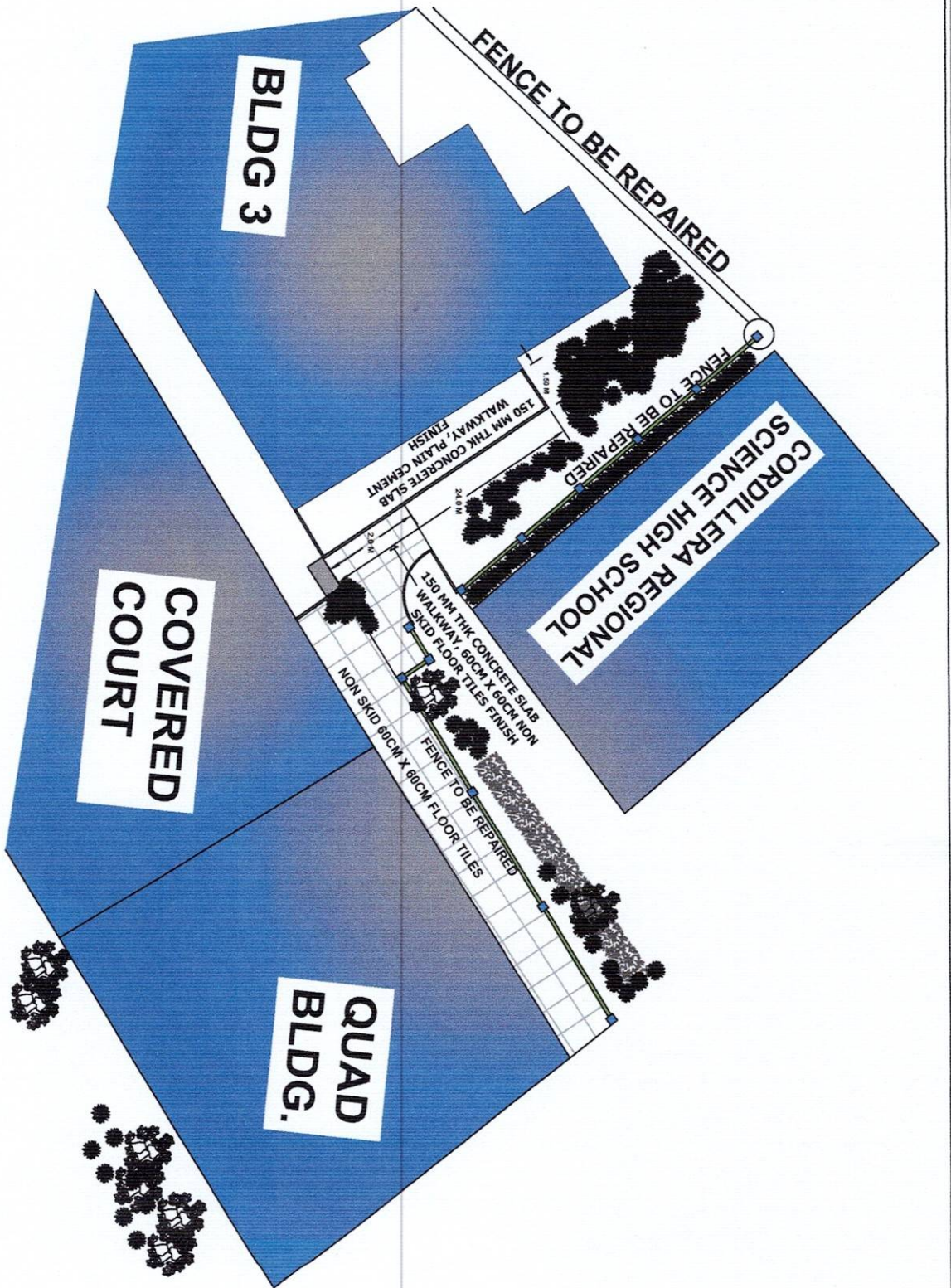


2 LINE CANAL CROSS SECTION
D 1 DRAWN
NOT TO SCALE



3 MANHOLE COVER DETAILS
D 1 DRAWN
NOT TO SCALE

PREPARED BY: KEMERY G. RIZALDO <small>ENGINEER I</small>		CHECKED BY: CHRISTOPHER B. HADSAN <small>ENGINEER III</small>		RECOMMENDING APPROVAL: EDGAR H. MADLAING <small>CHIEF ESSD</small>		APPROVED BY: ESTELA L. CARINO EAD, CESO III <small>REGIONAL DIRECTOR/DIRECTOR IV</small>		PROJECT TITLE: REPAIR OF DEPED CAR REGIONAL OFFICE WALKWAY, DRAINAGE AND FENCE		OWNER: DEPARTMENT OF EDUCATION-CAR REGIONAL OFFICE	
REPUBLIC OF THE PHILIPPINES DepEd DEPARTMENT OF EDUCATION EDUCATION FACILITIES SECTION <small>MANILA, LA TRINIDAD, BENGUET</small>										SHEET NO.: D1 1	



PREPARED BY :

CHECKED BY :

RECOMMENDING APPROVAL :

APPROVED BY :

PROJECT TITLE :

OWNER :

SHEET NO. :

KEMERY G. RIZALDO
 ENGINEER I

CHRISTOPHER B. HADSAN
 ENGINEER III

EDGAR H. MADLAING
 CHIEF, ESSD

ESTELA L. CARINO EDD, CESO III
 REGIONAL DIRECTOR/DIRECTOR IV

**REPAIR OF DEPED
 CAR REGIONAL
 OFFICE WALKWAY,
 DRAINAGE AND
 FENCE**

**DEPARTMENT OF EDUCATION-
 CAR REGIONAL OFFICE**
 SHEET CONTENT :
WALKWAY TOP VIEW PLAN